



SURGE SUPPRESSOR, DIODE COMBINATION, DC 12...250V, F. CONT. RELAYS A. MOTOR CONT. SZ S00,

**General technical data:**

product brand name		SIRIUS
Product designation		surge suppressor
Size of contactor		S00
Design of the surge suppressor		with diode assemblies
Ambient temperature		
• during storage	°C	-40 ... +80
• during operation	°C	-25 ... +60

**Control circuit/ Control:**

Type of voltage of the control supply voltage		DC
Control supply voltage 1		
• for DC		
— Initial rated value	V	12
— Final rated value	V	250

**Installation/ mounting/ dimensions:**

mounting position		any
Mounting type		clip-on
Width	mm	28
Height	mm	46
Depth	mm	9

**Certificates/ approvals:**

Certificate of suitability		CE / UL / CSA / CCC
----------------------------	--	---------------------

General Product Approval	Declaration of Conformity	Test Certificates	Shipping Approval
--------------------------	---------------------------	-------------------	-------------------



[Special Test Certificate](#)



### Shipping Approval



### other

[Environmental Confirmations](#)

[Confirmation](#)



### Further information

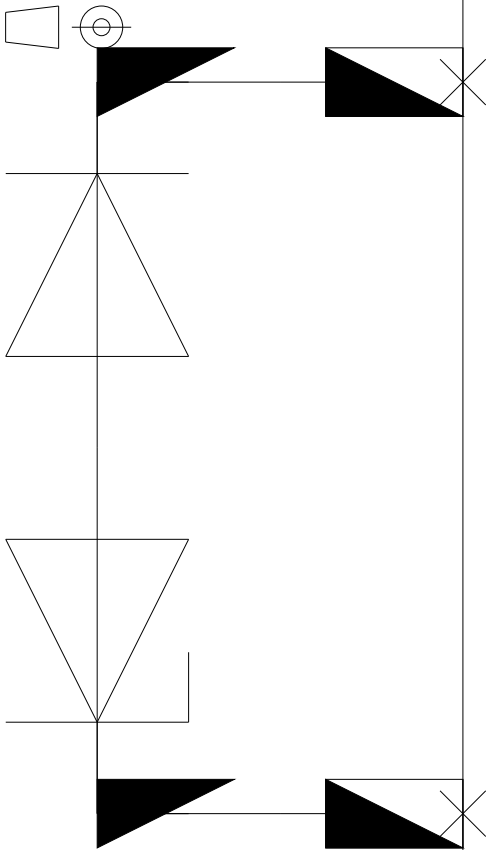
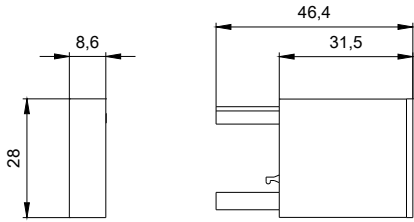
**Information- and Downloadcenter (Catalogs, Brochures,...)**  
<http://www.siemens.com/industrial-controls/catalogs>

**Industry Mall (Online ordering system)**  
<http://www.siemens.com/industrymall>

**Cax online generator**  
<http://support.automation.siemens.com/WW/CAXorder/default.aspx?lang=en&mlfb=3RT29161EH00>

**Service&Support (Manuals, Certificates, Characteristics, FAQs,...)**  
<http://support.automation.siemens.com/WW/view/en/3RT29161EH00/all>

**Image database (product images, 2D dimension drawings, 3D models, device circuit diagrams, EPLAN macros, ...)**  
<http://www.automation.siemens.com/bilddb/index.aspx?attID9=3RT29161EH00&lang=en>



last modified:

09.03.2015