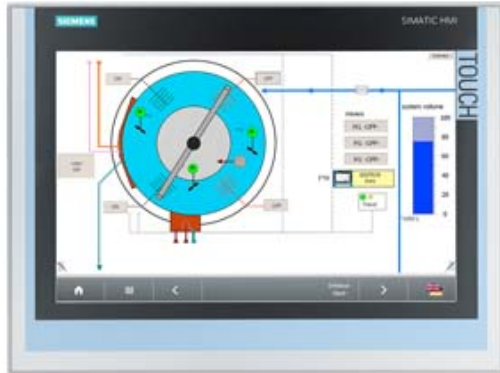


SIMATIC IFP1500 FLAT PANEL 15" DISPLAY (16:10), TOUCH, STANDARD VERSION MAX. 5M, 1280X800 PIXEL, FOR 24V DC, DISPLAYPORT / DVI INTERFACE INCL. DVI/USB-CABLE 1,8 M



### Product type designation

### General information

Short designation Flat Panel 15" Touch

### Display

Design of display	TFT widescreen display, LED backlighting
Screen diagonal	15.4 in
Screen diagonal (cm)	40 cm
Display width	331.2 mm
Display height	207 mm
Viewing angle	170° x 170°
On Screen Display (OSD) configuration	No; Adjustable by means of software
Number of colors (bit levels)	24 bit
Number of colors	16 777 216
Resolution (pixels)	
• Horizontal image resolution	1 280
• Vertical image resolution	800
• Resolution (WxH in pixel)	1280 x 800
• Pixel size, horizontal	0.259 mm
• Pixel size, vertical	0.259 mm
General features	
• Detachable from computer unit	5 m
• Brightness/contrast	400 cd/m <sup>2</sup> / 1000:1
— Brightness, max.	400 cd/m <sup>2</sup>
Backlighting	

• Backlighting (type)	LED
• MTBF backlighting (up to 50%, at 25 °C)	50 000 h; At 25°C
• Dimmable backlight	Yes; 0-100 %
<b>Keyboard</b>	
• Function keys	No
<b>Touch operation</b>	
• Monitor keyboard	Yes
<b>Installation type/mounting</b>	
Built-in unit	Yes; Portrait mode possible
• Permissible angle to the vertical backward (console)	35°
• Permissible angle to the vertical forward (ceiling mounting)	35°
<b>Supply voltage</b>	
Type of supply voltage	DC
Rated value (DC)	24 V
permissible range, lower limit (DC)	19.2 V
permissible range, upper limit (DC)	28.8 V
<b>Power losses</b>	
Power loss DC	
• Typical	40 W
• Maximum	65 W
<b>Interfaces</b>	
<b>Video interfaces</b>	
• DVI-D	Yes
• Display port	Yes; DisplayPort V1.1
<b>Touch interfaces</b>	
• USB	Yes
<b>Degree and class of protection</b>	
IP65 at front	Yes
Enclosure Type 4 at the front	Yes
NEMA4 at the front	No
NEMA4X at the front	No
IP20 rear	Yes
<b>Standards, approvals, certificates</b>	
CE mark	Yes
KC approval	Yes
cULus	Yes; Corresponds to UL 508
RCM (formerly C-TICK)	Yes
<b>Use in hazardous areas</b>	

• FM Class I Division 2

Yes

### Ambient conditions

#### Ambient temperature in operation

- Min. 0 °C
- max. 50 °C

#### Storage/transport temperature

- Min. -20 °C
- max. 60 °C

#### Relative humidity

- Operation, max. 95 %; Non-condensing

#### Vibrations

- Vibration load in operation 1 gn
- Vibration load during transport/storage 1 gn

#### Shock testing

- Shock loading in operation 15 gn
- Shock load during transport/storage 15 gn

### Mechanics/material

#### Type of housing (front)

aluminum

- aluminum

Yes

### Dimensions

Width of the housing front

415 mm

Height of housing front

310 mm

Mounting cutout, width

396 mm; Tolerance: +1 mm

Mounting cutout, height

291 mm; Tolerance: +1 mm

Device depth

62.5 mm

### Weights

Without packaging

3.9 kg

With packaging

5 kg

**last modified:**

12.03.2015