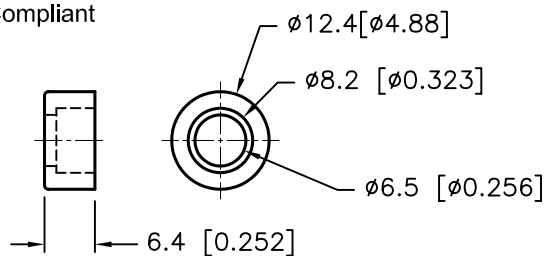


REVISIONS

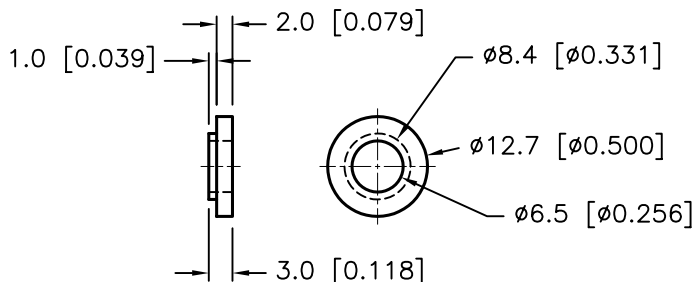
| DCP # | REV | DESCRIPTION | DRAWN | DATE | CHECKD | DATE | APPRVD | DATE |
|-------|-----|----------------------|-------|----------|--------|----------|--------|----------|
| 1876 | A | RELEASED | EO | 05/23/06 | TL | 06/07/06 | HO | 06/07/06 |
| 1921 | B | Update Specification | YA | 8/7/06 | HO | 8/7/06 | HO | 8/7/06 |



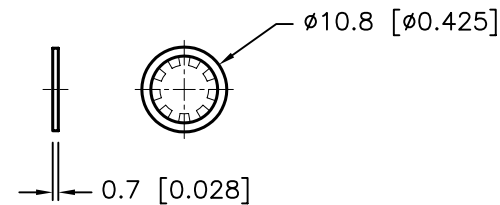
RoHS Compliant



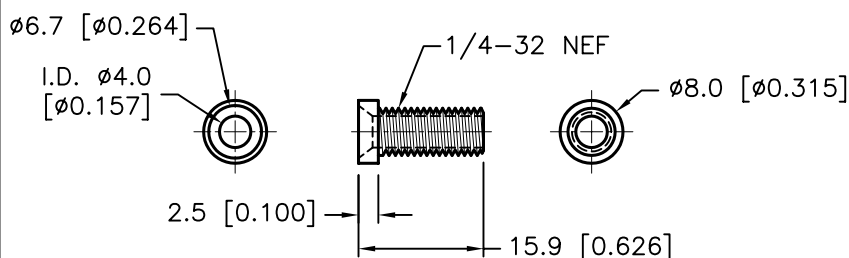
INSULATED HEAD



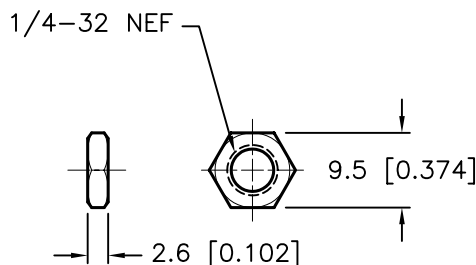
INSULATED WASHER



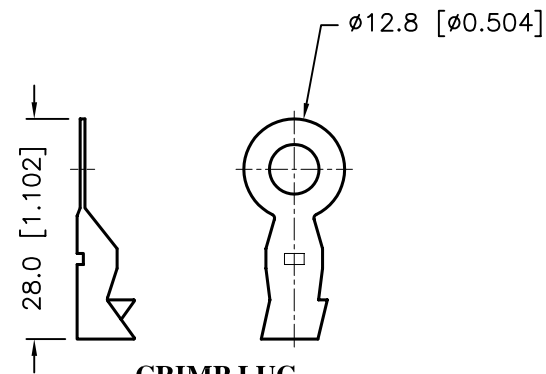
LOCK WASHER



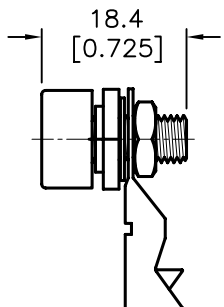
THREADED BODY



NUT



CRIMP LUG



ASSEMBLY

SPECIFICATIONS:

1. Threaded Body: Brass, Nickel-Plated
2. Insulated Head: ABS (Max. Heat Deflection Temperature: 89°C)
3. Insulated Washer: ABS
4. Lock Washer: Steel, Nickel-Plated
5. Crimp Lug: Brass, Nickel-Plated
6. Nut: Brass, Nickel-Plated
7. Max Ratings: 1KVAC @ 15A

| SPC TYPE No. | COLOR |
|--------------|-------|
| SPC15206 | BLACK |
| SPC15188 | RED |

DISCLAIMER: ALL STATEMENTS AND TECHNICAL INFORMATION CONTAINED HEREIN ARE BASED UPON INFORMATION AND/OR TESTS WE BELIEVE TO BE ACCURATE AND RELIABLE. SINCE CONDITIONS OF USE ARE BEYOND OUR CONTROL, THE USER SHALL DETERMINE THE SUITABILITY OF THE PRODUCT FOR THE INTENDED USE AND ASSUME ALL RISK AND LIABILITY WHATSOEVER IN CONNECTION THEREWITH.

TOLERANCES:

Unless Otherwise Specified
 .X ±0.2 [0.008]
 .XX ±0.12 [0.005]

| | |
|--------------|----------|
| DRAWN BY: | DATE: |
| EKLAS ODISH | 05/23/06 |
| CHECKED BY: | DATE: |
| THOMAS LEE | 06/07/06 |
| APPROVED BY: | DATE: |
| HISHAM ODISH | 06/07/06 |

| | | | |
|-----------------------|----------|---------------------|---------------|
| DRAWING TITLE: | | | |
| INSULATED BANANA JACK | | | |
| SIZE | DWG. NO. | ELECTRONIC FILE | REV |
| A | TA-759 | TA-759.DWG | B |
| SCALE: | NTS | U.O.M.: mm [INCHES] | SHEET: 1 OF 1 |