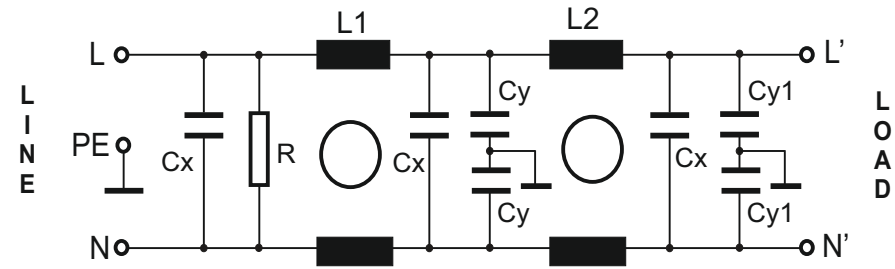
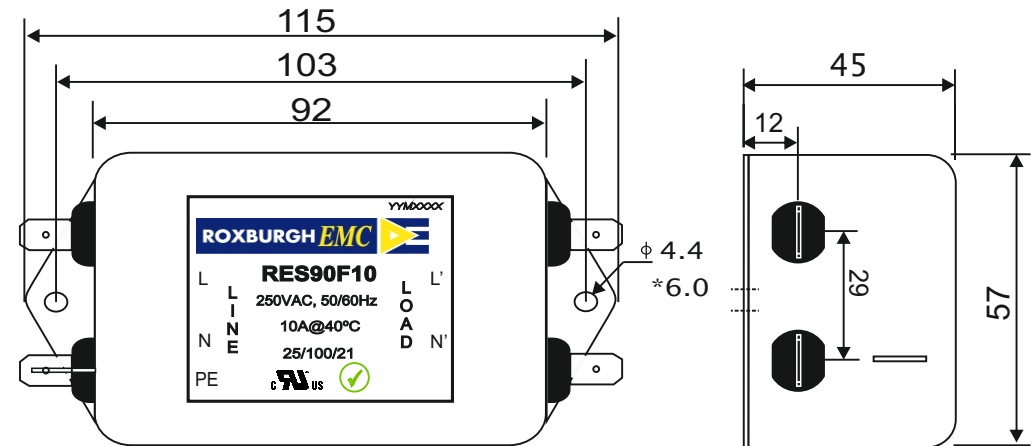


RES90F10**Rev. 0****CHARACTERISTICS:**

Rated Voltage:	250VAC max	
Rated Current at Ambient:	10A @ 40°C	
Operating Frequency:	DC-60HZ	
Climatic Class (IEC60068-1):	25/100/21	
Temperature Range:	-25°C to +100°C	
Over load Current:	1.5 x Rated Ct. for 1 Min	
Operational Leakage current : (at 230VAC and Total C +/-20%)	0.67 mA max	
Worst case Leakage current : (N interrupted and Total C +/-20%)	<1.34 mA max	
DCR @ 25°C (+/-25%) :	50 mΩ	
Test Voltage (100%) for 2 sec:-	P-P: 1100VDC	
	P-GND: 3000VDC	
Ingress Protection:	IP 20	
Weight (approximate):	420 gr	
FILTER PARAMETERS:	Total Inductance (P-P'+N-N') @10KHz:	16mH +50%,-30%
	Total Capacitance (P-P/P-N) @1KHz:	1.41μF +/- -20%
	Total Capacitance (P/N-GND) @1KHz:	8.6nF +/- -20%
	Total Resistance (P-P/P-N):	330K Ω +/- -10%
	Total Resistance (P/N-GND):	
APPROVALS:	REACH ROHS UL	APPROVED BY AJAY Date: 29-03-2014

**CIRCUIT DIAGRAM:****MECHANICAL DIMENSION (mm):****Note:**

Housing matl. Fe with Ni Plated
Fast-On Terminal (6.38 x 0.8mm)
Connections

**TOLERANCE: +/-1.0 mm****ROXBURGH EMC**

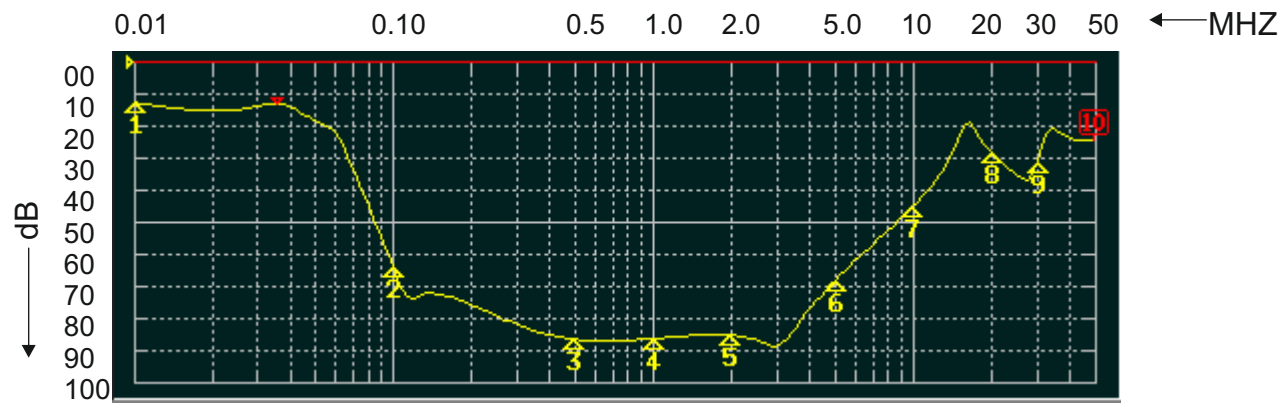
Tel:- +44(0) 1724 273200
email:- sales@dem-uk.com
web :- www.dem-uk.com/roxburgh

ROXBURGH EMC
FILTER INSERTION LOSS CHARACTERISTICS
CISPR 17 - 50 OHM METHOD

RES90F10



COMMON MODE



DIFFERENTIAL MODE

