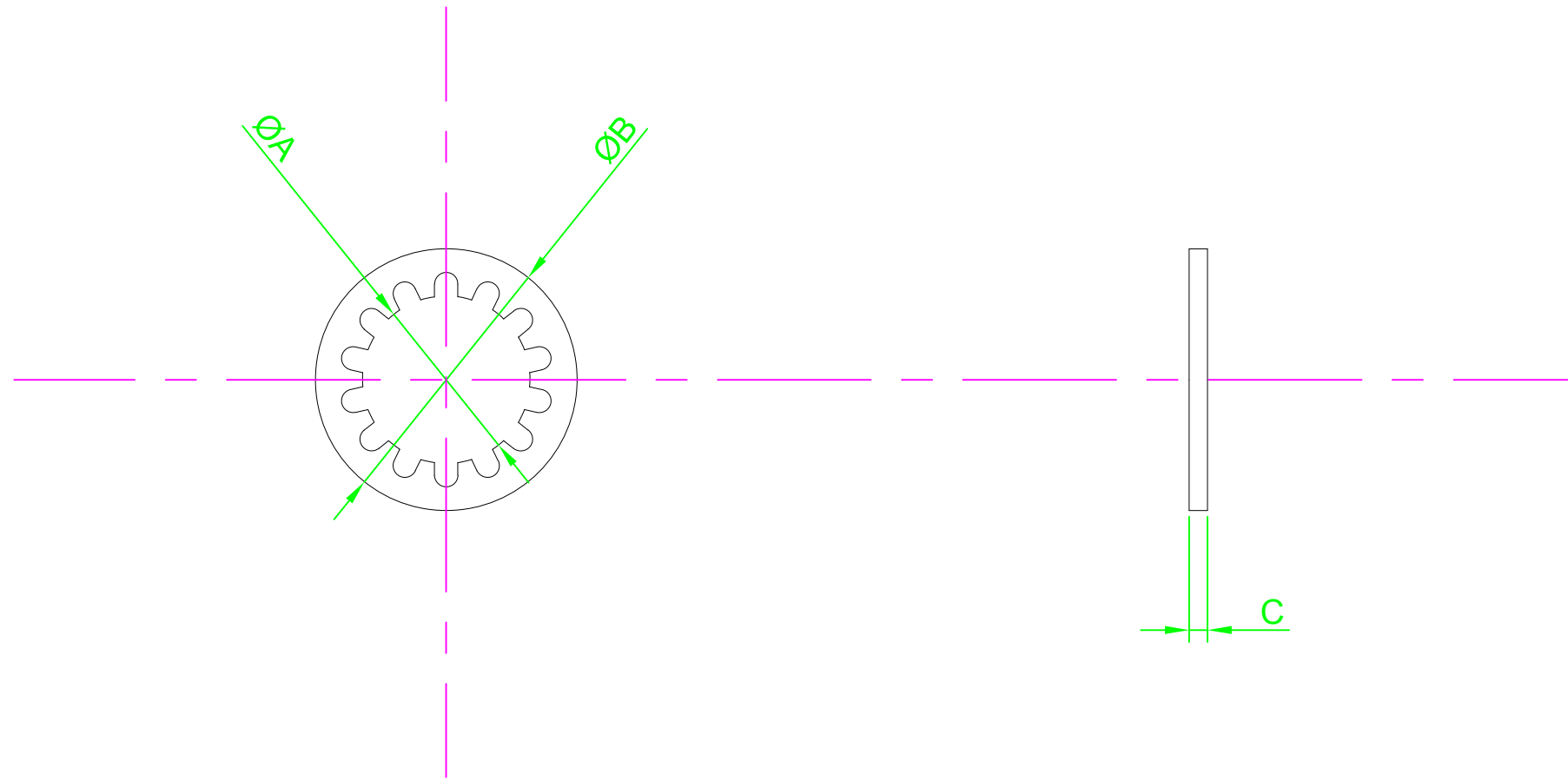


DO NOT SCALE DRAWING



REVISION

A INITIAL DRAWING 17.9.15

Part Number	ØA Nom	ØB Max	C Nom	Min No. of Teeth
M5 - ITST-Z100	5.30	10.0	0.6	8

NOTES:



UNLESS OTHERWISE SPECIFIED:
DIMENSIONS ARE IN MM (MILLIMETERS).
SURFACE FINISH:
TOLERANCES: DIN 6797

MATERIAL:
Spring Steel

TITLE:
Internal Toothed Lock Washer DIN 6797J

	NAME	DATE
DRAWN	Darryl Wilson	17.09.15
CHK'D		
APPVD		

HEAT TREATMENT:

DESIGN RIGHT. TR FASTENINGS LTD, 2003
UNDER NO CIRCUMSTANCES MUST THIS
DRAWING BE COPIED OR DISCLOSED
WITHOUT FIRST OBTAINING WRITTEN
AUTHORITY.

CUSTOMER PART NUMBER:
N/A

FINISH:
TC1D - Commercial Zinc/Clear Trivalent
De-Embrittled

DRAWING NUMBER:
TR32ITST-Z100

A4