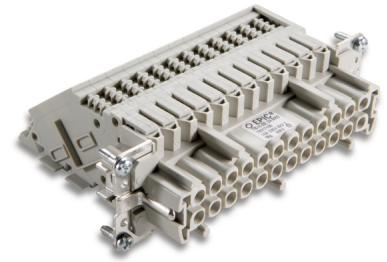


U.I. Lapp GmbH	DATASHEET	
	EPIC® TB-H-BE 24	70317100 14.11.2013

For convenient, clear wiring in control cabinets. Assembly in panel-mount base housings.
 Standard H-BE inserts for use with switch cabinets
 Pluggable with H-BE male inserts in hoods
 Fastening on side = "left" means that when mounting the terminal adapter on the left wall of a control cabinet, the PE connection and pin "1" are on the "top" side



Info

Plug connection for control cabinets

Application range

Control cabinet manufacturing
 Plant engineering

Remark

Photographs are not to scale and do not represent detailed images of the respective products.

Technical Data

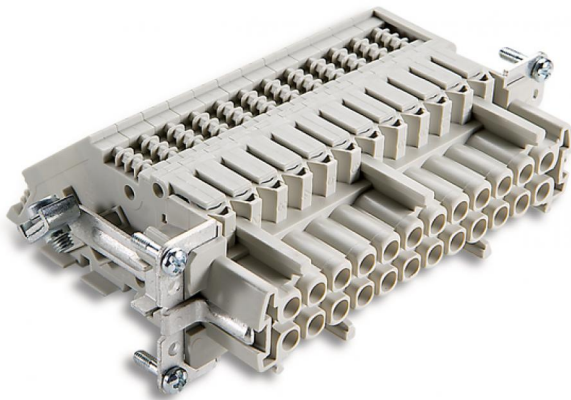
Article:	TB-H-BE 24 BRE
Version:	female
Fastening on side:	right
Contacts:	1 - 24
Pieces / PU:	10
Rated voltage (V):	IEC: 500 V UL: 600 V CSA: 600 V
Rated impulse voltage:	6 kV
Rated current (A):	IEC: 16 A UL: 16 A CSA: 16 A
Contacts:	Copper alloy, hard silver-plated
Number of contacts:	24 + PE
Termination methods:	Screw termination: 0.5 - 4 mm ²
Cycle of mechanical operation:	200
Temperature range:	-40 °C to +100 °C, short-term up to +125 °C
Degree of soiling:	3

Product Management	Document: EPIC® TB-H-BE 24	1 / 2
--------------------	----------------------------	-------

EPIC® TB-H-BE 24

70317100

14.11.2013



M

F

