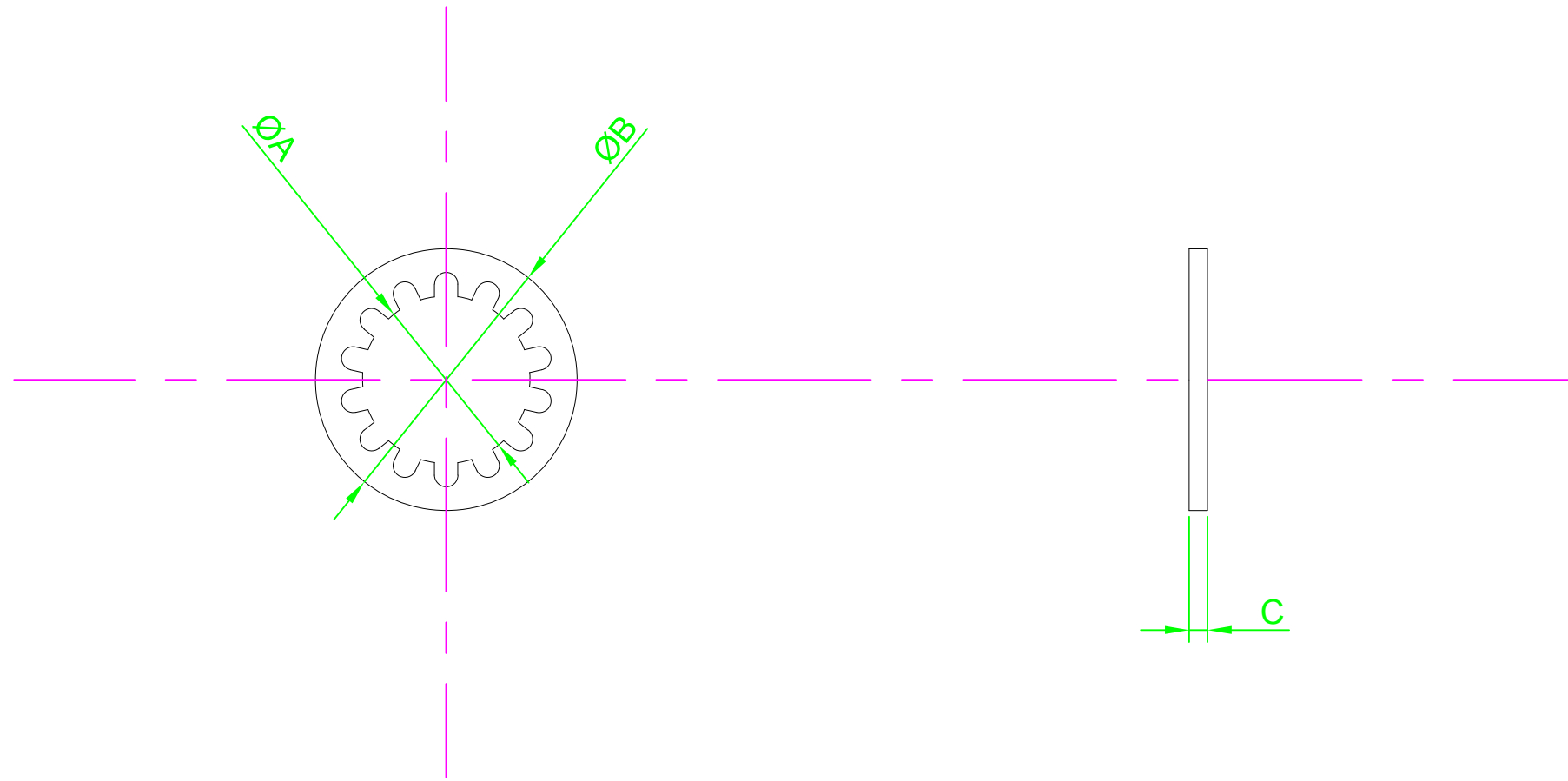


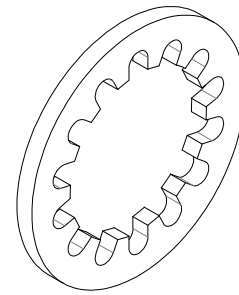
DO NOT SCALE DRAWING



REVISION

A INITIAL DRAWING 17.9.15

Part Number	ØA Nom	ØB Max	C Nom	Min No. of Teeth
DM2 - ITST-Z100	2.20	4.5	0.3	6
DM2.5 - ITST-Z100	2.70	5.5	0.4	6
DM3 - ITST-Z100	3.20	6.0	0.4	6
DM3.5 - ITST-Z100	3.70	7.0	0.5	6
DM4 - ITST-Z100	4.30	8.0	0.5	8
DM5 - ITST-Z100	5.30	10.0	0.6	8
DM6 - ITST-Z100	6.40	11.0	0.7	8
DM7 - ITST-Z100	7.40	12.5	0.8	8
DM8 - ITST-Z100	8.40	15.0	0.8	8
DM10 - ITST-Z100	10.50	18.0	0.9	9



NOTES:



UNLESS OTHERWISE SPECIFIED:
DIMENSIONS ARE IN MM (MILLIMETERS).
SURFACE FINISH:
TOLERANCES: DIN 6797

MATERIAL:
Spring Steel

TITLE:
Internal Toothed Lock Washer DIN 6797J

	NAME	DATE
DRAWN	Darryl Wilson	17.09.15
CHK'D		
APPVD		

HEAT TREATMENT:

DESIGN RIGHT. TR FASTENINGS LTD, 2003
UNDER NO CIRCUMSTANCES MUST THIS
DRAWING BE COPIED OR DISCLOSED
WITHOUT FIRST OBTAINING WRITTEN
AUTHORITY.

CUSTOMER PART NUMBER:
N/A

FINISH:
TC1D - Commercial ZInc/Clear Trivalent
De-Embrittled

DRAWING NUMBER:
TR32DITST-Z100

A4

PROJECTION

