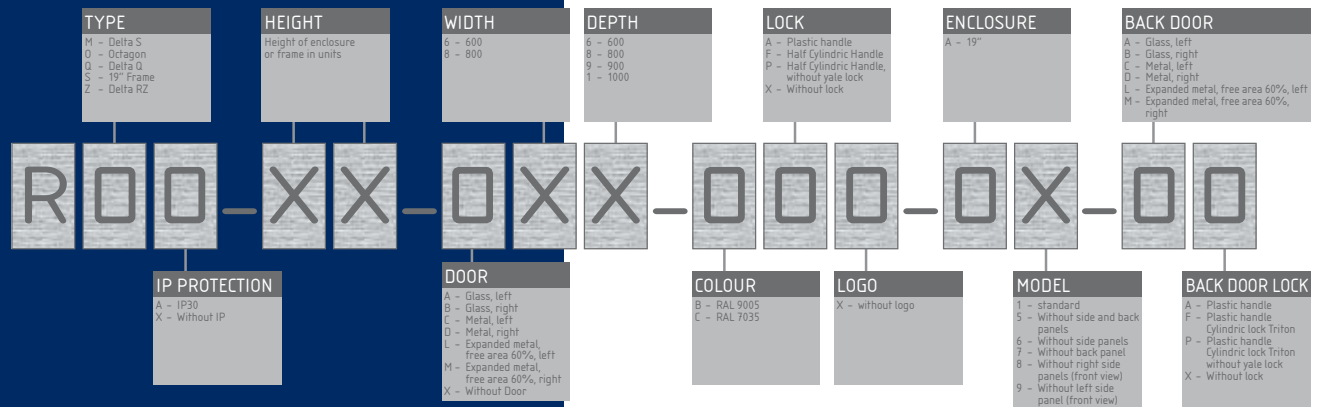
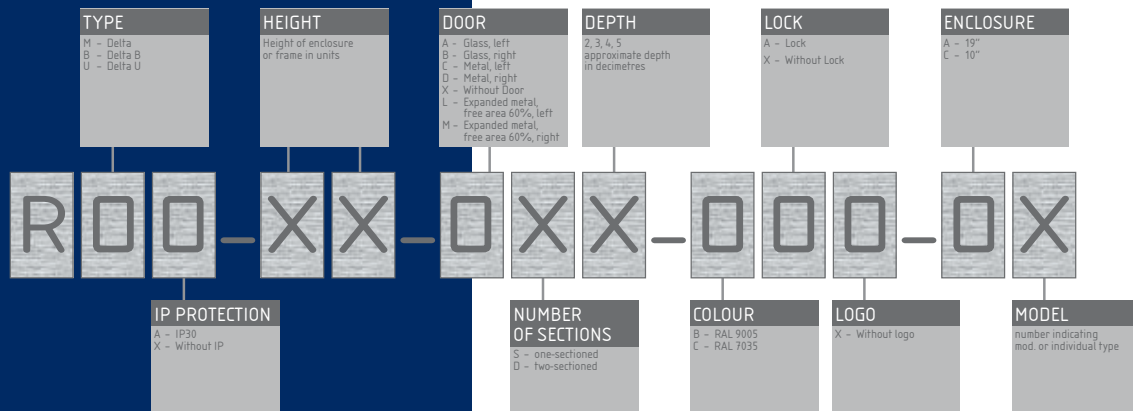


SYSTEM OF PART NUMBERS

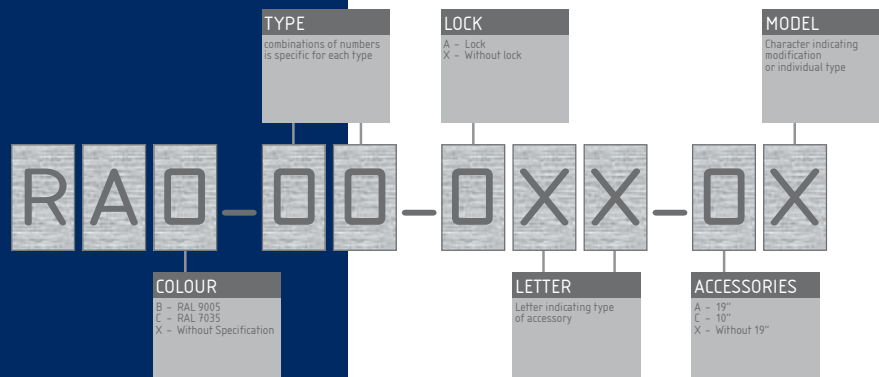
PART NUMBERS FOR FREE-STANDING ENCLOSURES



PART NUMBERS FOR WALL-MOUNTED ENCLOSURES



PART NUMBERS OF ACCESSORIES



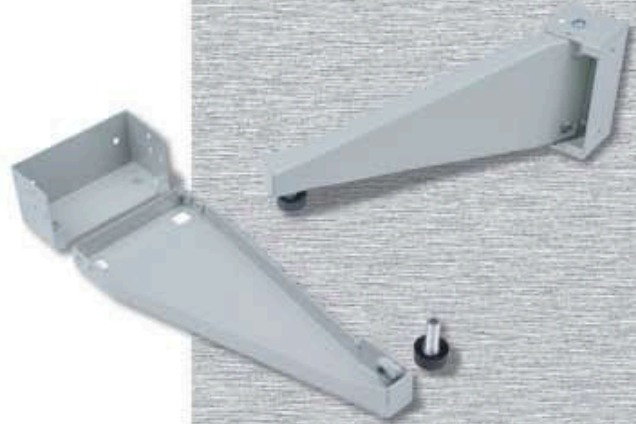
RAX-SS-X01-X1

The stabilisor set for Free-standing cabinets

SUPPLY INCLUDES

Screw M5 x 12

4x



BLANKING PANELS

RAX-ZP-X0X-A1

19" 1U, 2U, 3U or 4U Blanking panel

TYPE	A [mm]
RAX-ZP-X01-A1	44
RAX-ZP-X02-A1	88
RAX-ZP-X04-A1	133
RAX-ZP-X05-A1	177

SUPPLY INCLUDES

Screw M6x16

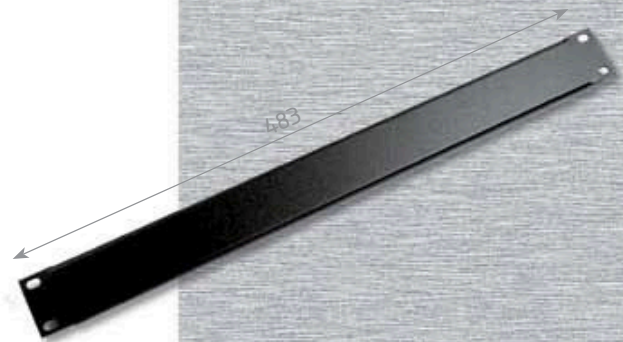
4x

Plastic washer 6,2

4x

Captive nut M6

4x



87

CABLE ENTRY PANELS

RAX-ZP-X03-A1

19" 1U Cable entry panel

SUPPLY INCLUDES

Screw M6x16

4x

Plastic washer 6,2

4x

Captive nut M6

4x

