

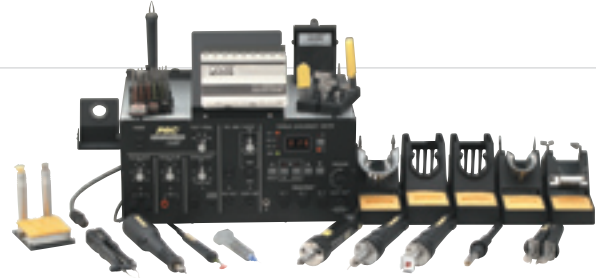


SENSATEMP REWORK SYSTEMS

ST 25, MBT 250 & PRC 2000

PRC 2000

The PRC 2000 Benchtop Factory is the ultimate rework center. The PRC 2000 can tackle just about any Thru-Hole, SMT application and is well suited for multilayer repairs on damaged or prototype PCBs. Featuring 3 simultaneously active SensaTemp handpiece channels, a built-in paste dispenser, MicroChine for removing conformal coatings or grinding away PCB laminate, and pulse heat technology. The PRC 2000 comes with 9 handpieces and continuously calibrates automatically.



ST 25

The ST 25 soldering system uses SensaTemp to maximize heat delivery and improves quality, reduces costs and eliminates the maintenance and calibration hassles associated with other soldering systems. The heavy-duty metal housing makes this system the ideal choice for the harshest environments and the sloped face of the front panel is a standard feature for ease of use. An optional mounting bracket (P/N 1321-0609-P1) is available to mount the system under a work-bench or shelf, preserving precious bench top space.

Features

- SensaTemp Control Technology
- Analog (dial) control
- °C/°F Temperature Scales
- Temperature Adjustment Lockout
- ESD grounding jack
- ESD Safe metal housing
- Stackable
- Can be mounted under work bench or shelf with optional bracket 1321-0609-P1



MBT 250 SD/SDTP

Still available



SensaTemp Power Source Specifications

SPECIFICATIONS	ST 25	MBT 250 SD MBT 250 SDTP	PRC 2000 SMT	PRC 2000 TH
System 115 V	8007-0528	8007-0203 (SD) 8007-0206 (SDTP)	8007-0132	8007-0138
Power Source Only 115 V	8007-0529	8007-0349	N/A	N/A
System 230 V	8007-0510	8007-0204 (SD) 8007-0207 (SDTP)	8007-0133	N/A
Power Source Only 230 V	8007-0511	8007-0353	N/A	N/A
Input Power Requirements	97-127 VAC, 50/60 Hz or 197-253 VAC, 50/60 Hz			
Max Power Consumption	120 W	240 W	400 W	
Dimensions	104mm H x 130mm W x 152mm D (4.1" H x 5.1" W x 6.0" D)	135mm H x 165mm W x 260mm D (5.3" H x 6.5" W x 9.25" D)	175mm H x 350mm W x 230mm D (6.9" H x 13.75" W x 9.25" D)	
Weight	2.3 Kgs (5 lbs.)	5 Kgs (11 lbs.)	13 Kgs (28.6 lbs.)	
Control		LED Display	LED Display	
Control Technology	SensaTemp (Black Connector HandPieces)			
Tip to Ground Resistance	2 ohms or less			
Temperature Accuracy	Meets or exceeds ANSI-J-STD 001			
Absolute Temperature Stability	± 1.1 °C (± 2 °F) at idle tip temp.			
Temperature Range	176° to 482°C (350° to 900°F) nominal			
System Can be Calibrated	Calibration not required			
Pump Type	N/A	Self Contained Pump		
Vacuum Rise Time	N/A	150 ms Average		
Vacuum (Nominal)	N/A	20 in Hg max		
Flow Control Valve	N/A	High Resolution Needle Valve	Coarse adjustment	
Pressure (Nominal)	N/A	18 p.s.i. max	7 p.s.i. max	
Air Flow (Nominal)	N/A	8 slpm max	13 slpm max	



PACE REWORK AND REPAIR

ST SYSTEM SPECIFICATIONS

SPECIFICATIONS	ST 25	ST 30	ST 50	ST 70	ST 100
System with TD-100 115v	N/A	8007-0499	8007-0500	8007-0504	8007-0525
System with PS-90 115v	8007-0528	N/A	N/A	N/A	N/A
Power Source Only 115v	8007-0529	8007-0497	8007-0501	8007-0505	8007-0524
System with TD-100 230v	N/A	8007-0512	8007-0514	8007-0518	8007-0527
System with PS-90 230v	8007-0510	N/A	N/A	N/A	N/A
Power Source Only 230v	8007-0511	8007-0513	8007-0515	8007-0519	8007-0526
Power Requirements	97-127 VAC, 50/60 Hz, 90 Watts max. 197-253 VAC, 50/60 Hz, 90 Watts max.				
Dimensions	104mm H x 130mm W x 152mm D (4.1" H x 5.1" W x 6.0" D)			135mm H x 165mm W x 260mm D (5.3" H x 6.5" W x 9.25" D)	
Weight	2.3 Kg (5 lbs.)			5 Kg (11 lbs.)	
Control	Dial	Dial	LED Display	Power Module	LED Display & Keypad
Control Technology	SensaTemp		IntelliHeat		
Tip to Ground Resistance	2 ohms or less				
Temperature Accuracy	Meets or exceeds ANSI-I-STD			N/A	Meets or exceeds ANSI-I-STD 001
Absolute Temperature Stability	± 1.1 °C (± 2 °F) at idle tip temp.				
Temperature Range	176 °C to 482 °C (350 ° to 900 °F)	Tip Heater Cartridge Technology Handpieces = 205° to 454°C (400° to 850°F) SensaTemp Technology Handpieces = 176° (Dial) or 37°C (Digital Display) to 482 °C (350° (Dial) or 100° (Digital Display) to 900 °F)			
System Can be Calibrated	Yes				

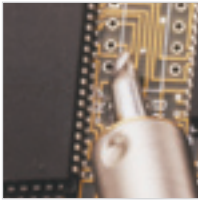
SPECIFICATIONS	ST 65	ST 75	ST 115
System 115v	8007-0502	8007-0506	8007-0508
Power Source Only 115v	8007-0503	8007-0507	8007-0509
System 230v	8007-0516	8007-0520	8007-0522
Power Source Only 230v	8007-0517	8007-0521	8007-0523
Power Requirements	97-127 VAC, 50/60 Hz, 90 Watts max. 197-253 VAC, 50/60 Hz, 90 Watts max.	97-127 VAC, 50/60 Hz, 120 Watts max. 197-253 VAC, 50/60 Hz, 120 Watts max.	
Dimensions	104mm H x 130mm W x 152mm D (4.1" H x 5.1" W x 6.0" D)	88mm H x 171mm W x 254mm D (3.5" H x 6.75" W x 10" D)	
Weight	2.3 Kg (5 lbs.)	4 Kg (9 lbs.)	
Control	Dial	Dial	LED Display
Control Technology	IntelliHeat		
Tip to Ground Resistance	2 ohms or less		
Temperature Accuracy	Meets or exceeds ANSI-I-STD		
Absolute Temperature Stability	± 1.1 °C (± 2 °F) at idle tip temp.		
Temperature Range	Tip Heater Cartridge Technology Handpieces = 205° to 454°C (400° to 850°F) SensaTemp Technology Handpieces = 176° (Dial) or 37°C (Digital Display) to 482 °C (350° (Dial) or 100° (Digital Display) to 900 °F)	Tip Heater Cartridge Compatible Handpieces = 232° to 454°C (450° to 850°F) nominal SensaTemp Compatible Handpieces = 176° to 482 °C (350° to 900 °F) nominal	
System Can be Calibrated	Yes		
Vacuum/Pressure Source Type	Compressed Air Powered Venturi	Self Contained Pump	
Vacuum Rise Time	150 ms Average		
Vacuum (Nominal)	20 in Hg max		
Flow Control Valve	Coarse Adjustment	High Precision Needle Valve	
Pressure (Nominal)	18 p.s.i. max		
Air Flow (Nominal)	8 slpm max		

INTELLIHEAT COMPATIBLE HANDPIECES

VERSATILITY, PERFORMANCE AND VALUE

SENSATEMP HANDPIECES

PS-90 UNIVERSAL SOLDERING IRON



The Universal Soldering Iron (**PS-90**) is ideal for most soldering applications and SMT rework operations where high thermal capacity and flexibility are required. The PS-90 features a rugged plug in heater with gold contacts. There are 15 single point soldering tips and over 10 surface mount removal tips available for the PS-90.

See Pages 23-24 for tip selection

SX-90 SODR-X-TRACTOR®



The best performing, in-line, vacuum desoldering tool (**SX-90 Sodr-X-Tractor®**) is ideal for Thru-Hole desoldering when fitted with SX-90 Desoldering tips and for SMT land clean-up when fitted with SX-90 Flo-D-Sodr® tips. SX-90 Desoldering tips are the longest lasting, best performing soldering tips on the market! The SX-90 features a unique solder collection system that can utilize disposable Flux/Solder traps or a reusable glass collection chamber. An operator replaceable plug-in heater cartridge that can be changed in seconds is standard. There is a wide range of standard and precision SX-90 Desoldering tips for when access is tight!

See Page 25 for tip selection.

TT-65 THERMOTWEEZ®



The most versatile and only patented SMT removal tool (**TT-65 ThermoTweez®**) provides safe, one-handed, rapid reflow and component removal of PLCCs and other 4 or 2 sided SMT components. Unlike other methods, its high thermal capacity and targeted heat delivery remove even the largest SMDs in just seconds without damaging the PCB or risking of adjacent component reflow; even on heavy assemblies. The patented vertically oriented handpiece and a wide variety of quick-change, slim-line tips easily reach into the tightest spaces for fast, safe component removal. The TT-65 also features a patented "stroke" adjustment to reduce hand fatigue for repetitive operations. **See Page 26** for tip selection.

TJ-85 THERMOJET®



When the precise application of hot air is required, our slim line air pencil (**TJ-85 ThermoJet®**) is ideal for delivering heat for the installation and removal of chip components, SOTs, and SOICs. Multiple quick-change nozzle sizes are available. The handpiece's slim line, pencil grip design maximizes operator comfort and control. The TJ-85's airflow is actuated with a foot pedal. Ideal for the precise application of hot air for large SMDs down to 0201s.

See Page 26 for nozzle selection.

