

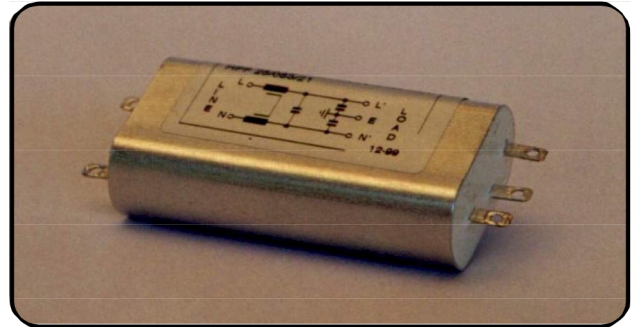
## Caractéristiques / Characteristics

Condensateurs / Capacitors : X2Y2

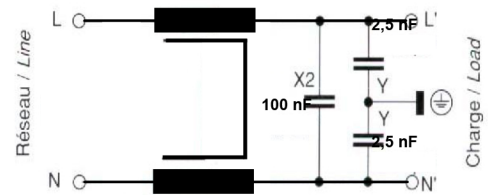
- Tension nominale /  
Rated voltage..... 250 Vac – 50/60 Hz
- Plage des températures  
Temperature range..... -25°C à/to +85°C
- Classe d'utilisation /  
Utilization class : (DIN 40040)..... HPF  
(CEI/IEC)..... 25 / 085 /21
- Tolérance de capacité /  
Capacitance tolerance..... ± 20 %
- Tolérance d'inductivité /  
Inductivity tolerance..... -30% à/to +50%
- Courant de fuite /  
Leakage current ..... < 2 x 0,24 mA (250 V – 50 Hz)

### Tensions d'essais / Test Voltages

Durée / Time	Cx2	Cy2
2 s	1625 V dc	2700 V dc
Tension de choc / Impact voltage 1,2/50 µs	3 kV	5 kV



## Schéma / Circuit diagram

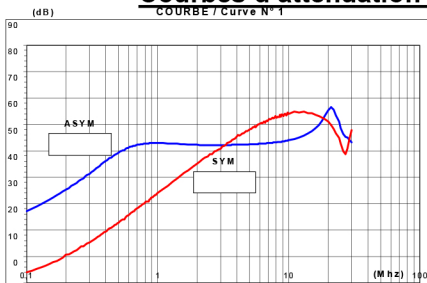


Courant nominal à 40°C Nominal current at 40°C	Inductance (mH)	N° courbe Curve	Homologations	Code Part number
1 A	2 x 6	1	cURus	3761605001 (RX 730 AE)
2,5 A	2 x 2	2	cURus	3761606001 (RX 730 RO)
4 A	2 x 1	3	cURus	3761607001 (RX 730 RC)
6,5 A	2 x 1	3	cURus	3761608001 (RX 730 CR)

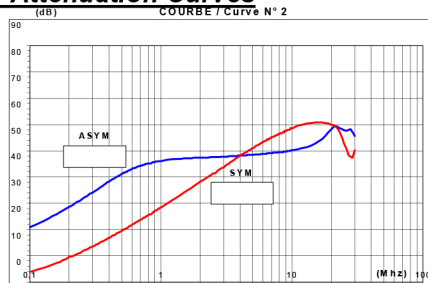
Boîtier métallique / Connexions : fast-on 2,8 x 0,5.  
Steel case / Connections : fast-on on 2,8 x 0,5.

## Courbes d'atténuation / Attenuation Curves

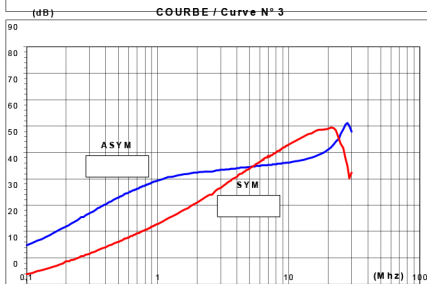
COURBE / Curve N° 1



COURBE / Curve N° 2



COURBE / Curve N° 3



## Dimensions du boîtier : Case dimensions

