

Collet chuck type ER with mini nut DIN 6499

Slim design, ISO 12164 (DIN 69893)

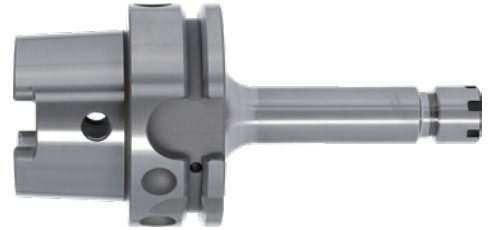
ATORN[®]

Version

- Alloyed case-hardening steel, tensile strength in the core min. 950 N/mm²
- Internal coolant supply
- Case-hardened HRc 60 ± 2 (HV 700 ± 50), hardness depth 0.8 mm ± 0.2 mm
- Taper angle tolerance quality < AT3 in accordance with DIN 7187 and DIN 2080
- With Balluff chip hole
- All functional surfaces machined

Delivery

with clamping nut



Art. no.	23297 105
Tool holding device	HSK 63
Collet type	ER 16
Min./max. clamping range 2	0.5-10 mm
Projecting length	160 mm
Outer diameter	22 mm
Balancing quality	G 2.5 at 25 rpm

EAN-Code

4050293710175