

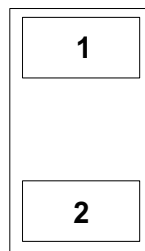
AQHVxx-01ETG-C

General Purpose ESD Protection

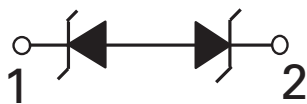
 **AUTOMOTIVE GRADE**  **RoHS**  **HF**  **Pb**



Pinout



Functional Block Diagram



Description

The AQHVxx-01ETG-C series is designed to provide an option for very fast acting, high performance over-voltage protection components. This series is ideally suited for power interfaces, passenger charging interfaces, and well as LED lighting modules, and low speed I/Os. It will protect sensitive equipment from damage due to electrostatic discharge (ESD) and other overvoltage transients.

The AQHVxx-01ETG-C series can safely absorb repetitive ESD strikes above the maximum level of the IEC 61000-4-2 international standard (Level 4, $\pm 8\text{kV}$ contact discharge) without performance degradation and safely conduct up to 8A (AQHV12-C) of induced surge current (IEC 61000-4-5 2nd edition, $t_P=8/20\mu\text{s}$) with very low clamping voltages.

Features & Benefits

- ESD, IEC 61000-4-2, $\pm 30\text{kV}$ contact, $\pm 30\text{kV}$ air
- EFT, IEC 61000-4-4, 40A 5/50ns)
- Lightning, IEC 61000-4-5 2nd Edition, 8A (8/20us) for AQHV12-C
- Low clamping voltage
- PPAP capable
- Low leakage current
- Small SOD882 packaging helps save board space
- AEC-Q101 qualified
- Moisture Sensitivity Level(MSL -1)
- Halogen free, lead free and RoHS compliant

Applications

- LED Lighting Modules
- Portable Instrumentation
- General Purpose I/O
- RS232 / RS485
- CAN and LIN Bus
- Automotive application

Life Support Note:

Not Intended for Use in Life Support or Life Saving Applications

The products shown herein are not designed for use in life sustaining or life saving applications unless otherwise expressly indicated.

AQHVxx-01ETG-C

General Purpose ESD Protection

Absolute Maximum Ratings

Symbol	Parameter	Value	Units
P_{pk}	Peak Pulse Power ($t_p=8/20\mu s$)	200	W
T_{OP}	Operating Temperature	-40 to 150	$^{\circ}C$
T_{STOR}	Storage Temperature	-55 to 150	$^{\circ}C$

Caution: Stresses above those listed in "Absolute Maximum Ratings" may cause permanent damage to the component. This is a stress only rating and operation of the component at these or any other conditions above those indicated in the operational sections of this specification is not implied.

AQHV12-C Electrical Characteristics ($T_{OP}=25^{\circ}C$)

Parameter	Symbol	Test Conditions	Min	Typ	Max	Units
Reverse Standoff Voltage	V_{RWM}	$I_R=1\mu A$			12.0	V
Breakdown Voltage	V_{BR}	$I_R=1mA$	13.3			V
Reverse Leakage Current	I_{LEAK}	$V_R=12V$			1.0	μA
Clamp Voltage ¹	V_C	$I_{PP}=1A, t_p=8/20\mu s, Fwd$			19.0	V
		$I_{PP}=8A, t_p=8/20\mu s, Fwd$			25.0	V
Dynamic Resistance ²	R_{DYN}	TLP, $t_p=100ns, I/O$ to GND		0.48		Ω
Peak Pulse Current	I_{PP}	$t_p=8/20\mu s$			8.0	A
ESD Withstand Voltage ¹	V_{ESD}	IEC 61000-4-2 (Contact Discharge)	± 30			kV
		IEC 61000-4-2 (Air Discharge)	± 30			kV
Diode Capacitance ¹	$C_{I/O-I/O}$	Reverse Bias=0V, f=1MHz			30	pF

AQHV15-C Electrical Characteristics ($T_{OP}=25^{\circ}C$)

Parameter	Symbol	Test Conditions	Min	Typ	Max	Units
Reverse Standoff Voltage	V_{RWM}	$I_R=1\mu A$			15.0	V
Breakdown Voltage	V_{BR}	$I_R=1mA$	16.7			V
Reverse Leakage Current	I_{LEAK}	$V_R=15V$			1.0	μA
Clamp Voltage ¹	V_C	$I_{PP}=1A, t_p=8/20\mu s, Fwd$			22.0	V
		$I_{PP}=5A, t_p=8/20\mu s, Fwd$			30.0	V
Dynamic Resistance ²	R_{DYN}	TLP, $t_p=100ns, I/O$ to GND		0.43		Ω
Peak Pulse Current	I_{PP}	$t_p=8/20\mu s$			5.0	A
ESD Withstand Voltage ¹	V_{ESD}	IEC 61000-4-2 (Contact Discharge)	± 30			kV
		IEC 61000-4-2 (Air Discharge)	± 30			kV
Diode Capacitance ¹	$C_{I/O-I/O}$	Reverse Bias=0V, f=1MHz			24	pF

AQHVxx-01ETG-C

General Purpose ESD Protection

AQHV24-C Electrical Characteristics (T_{OP}=25°C)

Parameter	Symbol	Test Conditions	Min	Typ	Max	Units
Reverse Standoff Voltage	V _{RWM}	I _R =1μA			24.0	V
Breakdown Voltage	V _{BR}	I _R =1mA	26.7			V
Reverse Leakage Current	I _{LEAK}	V _R =24V			1.0	μA
Clamp Voltage ¹	V _C	I _{PP} =1A, t _p =8/20μs, Fwd			36.0	V
		I _{PP} =3A, t _p =8/20μs, Fwd			50.0	V
Dynamic Resistance ²	R _{DYN}	TLP, t _p =100ns, I/O to GND		0.65		Ω
Peak Pulse Current	I _{PP}	t _p =8/20μs			3.0	A
ESD Withstand Voltage ¹	V _{ESD}	IEC 61000-4-2 (Contact Discharge)	±24			kV
		IEC 61000-4-2 (Air Discharge)	±30			kV
Diode Capacitance ¹	C _{I/O-I/O}	Reverse Bias=0V, f=1MHz			17	pF

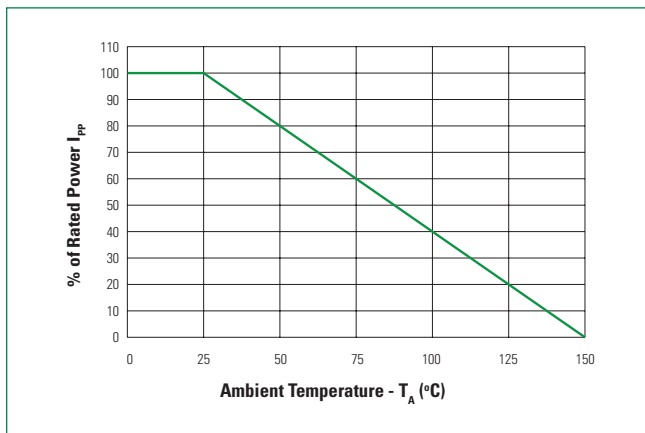
AQHV36-C Electrical Characteristics (T_{OP}=25°C)

Parameter	Symbol	Test Conditions	Min	Typ	Max	Units
Reverse Standoff Voltage	V _{RWM}	I _R =1μA			36.0	V
Breakdown Voltage	V _{BR}	I _R =1mA	40.0			V
Reverse Leakage Current	I _{LEAK}	V _R =36V			1.0	μA
Clamp Voltage ¹	V _C	I _{PP} =1A, t _p =8/20μs, Fwd			52.0	V
		I _{PP} =2A, t _p =8/20μs, Fwd			65.0	V
Dynamic Resistance ²	R _{DYN}	TLP, t _p =100ns, I/O to GND		1.33		Ω
Peak Pulse Current	I _{PP}	t _p =8/20μs			2.0	A
ESD Withstand Voltage ¹	V _{ESD}	IEC 61000-4-2 (Contact Discharge)	±15			kV
		IEC 61000-4-2 (Air Discharge)	±20			kV
Diode Capacitance ¹	C _{I/O-I/O}	Reverse Bias=0V, f=1MHz			13	pF

Note:
¹ Parameter is guaranteed by design and/or component characterization.

² Transmission Line Pulse (TLP) with 100ns width, 2ns rise time, and average window t1=70ns to t2= 90ns

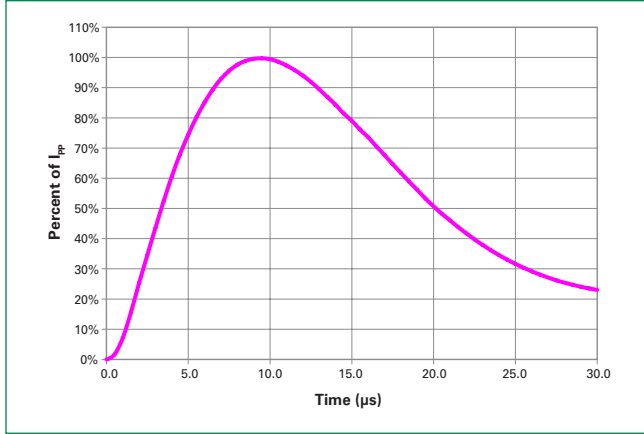
Power Derating Curve



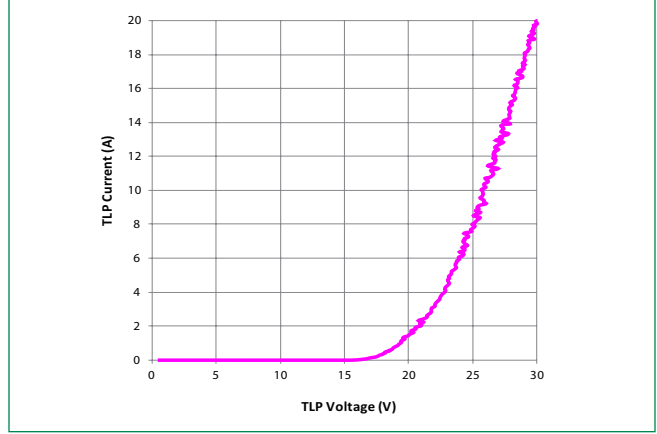
AQHVxx-01ETG-C

General Purpose ESD Protection

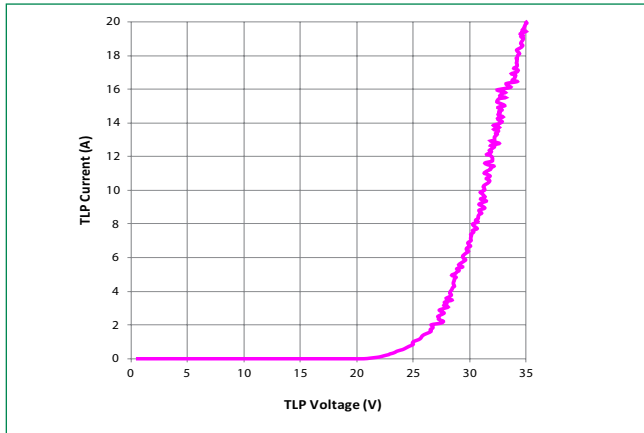
8/20 μ s Pulse Waveform



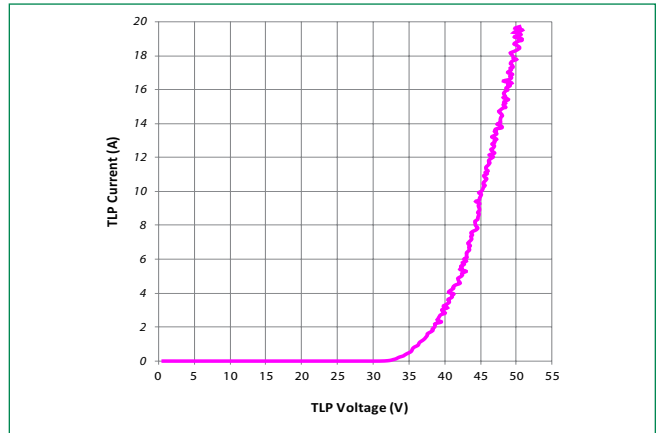
AQHV12-C Transmission Line Pulsing(TLP) Plot



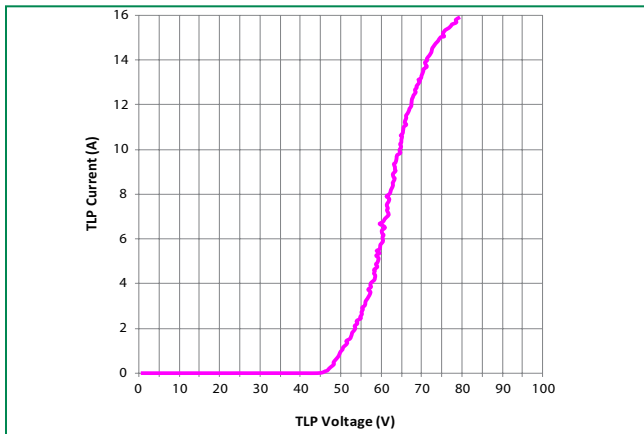
AQHV15-C Transmission Line Pulsing(TLP) Plot



AQHV24-C Transmission Line Pulsing(TLP) Plot



AQHV36-C Transmission Line Pulsing(TLP) Plot

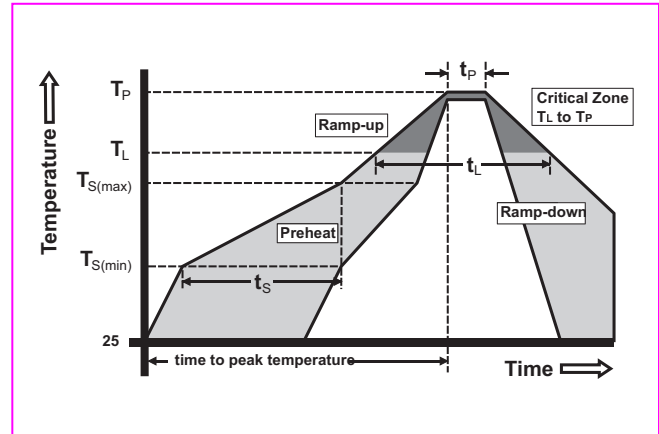


AQHVxx-01ETG-C

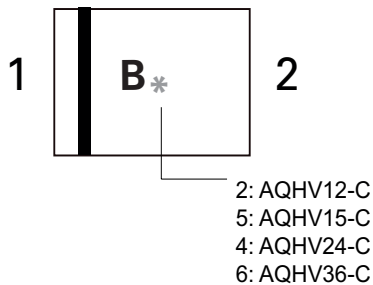
General Purpose ESD Protection

Soldering Parameters

Reflow Condition		Pb – Free assembly
Pre Heat	- Temperature Min ($T_{s(min)}$)	150°C
	- Temperature Max ($T_{s(max)}$)	200°C
	- Time (min to max) (t_s)	60 – 120 secs
Average ramp up rate (Liquidus) Temp (T_L) to peak		3°C/second max
$T_{s(max)}$ to T_L - Ramp-up Rate		3°C/second max
Reflow	- Temperature (T_L) (Liquidus)	217°C
	- Temperature (t_L)	60 – 150 seconds
Peak Temperature (T_p)		260 ^{+0/-5} °C
Time within 5°C of actual peak Temperature (t_p)		30 seconds
Ramp-down Rate		6°C/second max
Time 25°C to peak Temperature (T_p)		8 minutes Max.
Do not exceed		260°C



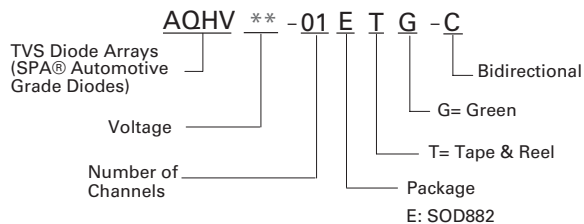
Part Marking System



Product Characteristics

Lead Plating	Pre-Plated Frame
Lead Material	Copper Alloy
Substrate Material	Silicon
Body Material	Molded Compound
Flammability	UL Recognized compound meeting flammability rating V-0

Part Numbering System



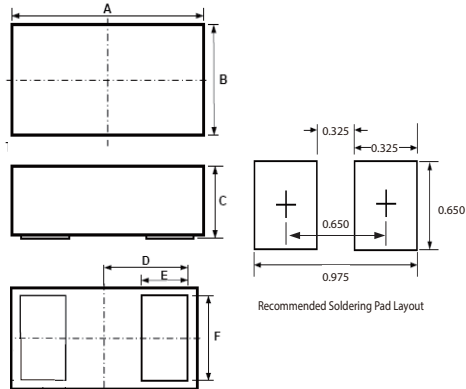
Ordering Information

Part Number	Package	Min. Order Qty.
AQHV12-01ETG-C	SOD882	10000
AQHV15-01ETG-C		
AQHV24-01ETG-C		
AQHV36-01ETG-C		

AQHVxx-01ETG-C

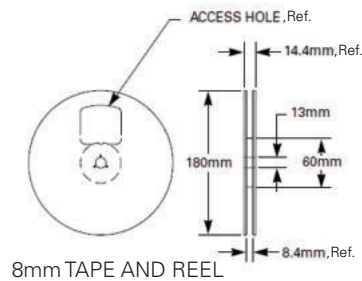
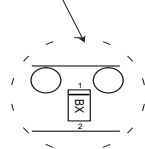
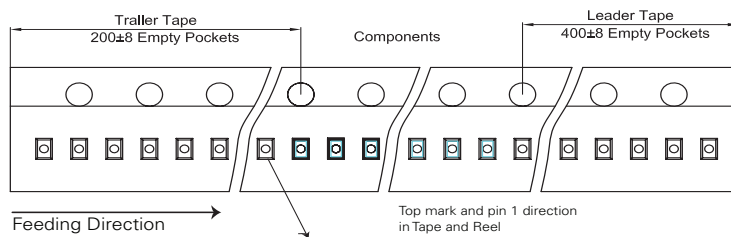
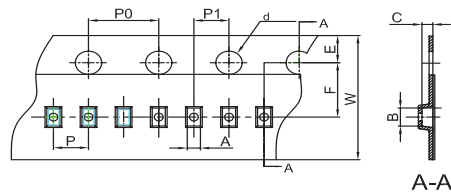
General Purpose ESD Protection

Package Dimensions — SOD882



Symbol	Package	SOD882				
	JEDEC	MO-236				
	Millimeters			Inches		
	Min	Typ	Max	Min	Typ	Max
A	0.90	1.00	1.10	0.037	0.039	0.041
B	0.50	0.60	0.70	0.022	0.024	0.026
C	0.40	0.50	0.60	0.016	0.020	0.024
D		0.45		0.018		
E	0.20	0.25	0.35	0.008	0.010	0.012
F	0.45	0.50	0.55	0.018	0.020	0.022

Embossed Carrier Tape & Reel Specification



Symbol	Millimeters
A	0.70+/-0.045
B	1.10+/-0.045
C	0.65+/-0.045
d	1.55+/-0.10
E	1.75+/-0.05
F	3.50+/-0.05
P	2.00+/-0.10
P0	4.00+/-0.10
P1	2.00+/-0.10
W	8.00 + 0.30 -0.10

Disclaimer Notice - Information furnished is believed to be accurate and reliable. However, users should independently evaluate the suitability of and test each product selected for their own applications. Littelfuse products are not designed for, and may not be used in, all applications. Read complete Disclaimer Notice at <http://www.littelfuse.com/disclaimer-electronics>.