

## TERMSERIES SSS RELAIS 60V/24V 0,1ADC

**Weidmüller Interface GmbH & Co. KG**  
 Klingenbergstraße 16  
 D-32758 Detmold  
 Germany  
 Fon: +49 5231 14-0  
 Fax: +49 5231 14-292083  
 www.weidmueller.com



Similar to illustration

TERMSERIES accessories include:

- Spare relay
- Base
- Partition plates
- Cross-connections
- Power-feed modules

### General ordering data

Type	SSS RELAIS 60V/24V 0,1ADC
Order No.	<a href="#">4061230000</a>
Version	TERMSERIES, solid-state relays, 1 NO contact (Bipolar transistor), Rated control voltage: 52 V DC...60 V DC...72 V DC, Rated switching voltage: 3... 48 V DC, Continuous current: 100 mA, Plug-in connection
GTIN (EAN)	4032248415106
Qty.	20 pc(s).

**TERMSERIES**  
**SSS RELAIS 60V/24V 0,1ADC**

**Weidmüller Interface GmbH & Co. KG**  
 Klingenbergstraße 16  
 D-32758 Detmold  
 Germany  
 Fon: +49 5231 14-0  
 Fax: +49 5231 14-292083  
 www.weidmueller.com

**Technical data****Dimensions and weights**

Width	5 mm	Width (inches)	0.197 inch
Height	28 mm	Height (inches)	1.102 inch
Depth	15 mm	Depth (inches)	0.591 inch
Net weight	20.05 g		

**Temperatures**

Humidity	40 °C / 93 % rel. humidity, no condensation	Operating temperature, max.	60 °C
Operating temperature, min.	-20 °C	Storage temperature, max.	70 °C
Storage temperature, min.	-40 °C	Operating temperature	-20 °C...60 °C
Storage temperature	-40 °C...70 °C		

**Probability of failure**

MTTF	3,989 Years
------	-------------

**Environmental Product Compliance**

REACH SVHC	Lead 7439-92-1
------------	----------------

**Control side**

Rated control voltage	52 V DC...60 V DC...72 V DC	Nominal control current	2.8 mA DC (±10%)
Power rating	180 mW	Status indicator	No

**Load side**

Rated switching voltage	3... 48 V DC	Continuous current	100 mA
Rated switching current	100 mA/ DC	Switch-on delay	< 35 µs
Switch-off delay	< 355 µs	Voltage drop at max. load	≤ 1 V
Leakage current	< 10 µA	Min. switching current	500 µA
Short-circuit-proof	No	Protective circuit, load side	Free-wheeling diode

**Contact data**

Contact type	1 NO contact (Bipolar transistor)
--------------	-----------------------------------

**General data**

Colour	black
--------	-------

**Insulation coordination**

Clearance and creepage distances for control side - load side	≥ 5.5 mm	Dielectric strength for control side - load side	2.5 kV <sub>eff</sub>
---	----------	--	-----------------------

**Connection data**

Wire connection method	Plug-in connection
------------------------	--------------------

**Data sheet**

**TERMSERIES  
SSS RELAIS 60V/24V 0,1ADC**

**Weidmüller Interface GmbH & Co. KG**  
 Klingenbergstraße 16  
 D-32758 Detmold  
 Germany  
 Fon: +49 5231 14-0  
 Fax: +49 5231 14-292083  
 www.weidmueller.com

**Technical data**

**Classifications**

ETIM 3.0	EC001504	ETIM 4.0	EC001437
ETIM 5.0	EC001437	ETIM 6.0	EC001504
UNSPSC	30-21-18-01	eClass 5.1	27-27-09-90
eClass 6.2	27-37-16-01	eClass 7.1	27-37-16-01
eClass 8.1	27-37-16-01	eClass 9.0	27-37-16-04
eClass 9.1	27-37-16-04		

**Approvals**

Approvals



ROHS

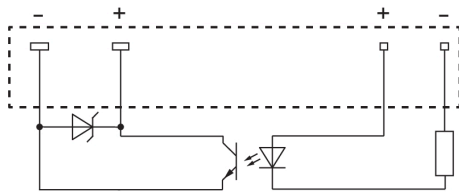
Conform

**Downloads**

Brochure/Catalogue	<a href="#">CAT 4.2 ELECTR 18/19 EN</a>
Engineering Data	<a href="#">WSCAD</a>
Engineering Data	<a href="#">STEP</a>

**Data sheet****TERMSERIES  
SSS RELAIS 60V/24V 0,1ADC**

**Weidmüller Interface GmbH & Co. KG**  
Klingenbergstraße 16  
D-32758 Detmold  
Germany  
Fon: +49 5231 14-0  
Fax: +49 5231 14-292083  
www.weidmueller.com

**Drawings****Wiring diagram**

View of pins from below

**Dimensional drawing**