

# GN 350.3 | Levelling washers

single body, steel or stainless steel



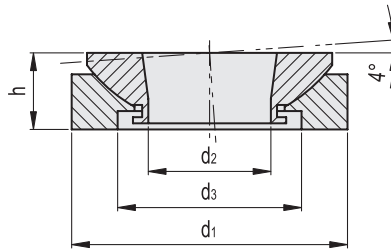
## STANDARD EXECUTIONS

- **GN 350.3-ST**: zinc-plated steel.
- **GN 350.3-NI**: AISI 303 stainless steel.

## FEATURES AND APPLICATIONS

GN 350.3 levelling washers are suitable for locking mechanical parts on non-parallel surfaces.

The coupling of the spherical surfaces of the two washers allows a very high load resistance.



## GN 350.3-ST

Code	Description	d1	d2	d3	h	Max screw dimension	Static load [KN]	⚖️
GN.12052	GN 350.3-25-ST	25	8.5	15	8	M8	40	22
GN.12057	GN 350.3-32-ST	32	13	20	10	M10	65	44
GN.12062	GN 350.3-45-ST	45	20	30	12.5	M16	120	90
GN.12067	GN 350.3-58-ST	58	29	38	16	M24	210	215
GN.12072	GN 350.3-70-ST	70	36	48	20	M30	330	362
GN.12077	GN 350.3-80-ST	80	44	61	20	M36	495	427
GN.12087	GN 350.3-105-ST	105	58	78	25	M48	920	930

## GN 350.3-NI



Code	Description	d1	d2	d3	h	Max screw dimension	Static load [KN]	⚖️
GN.12051	GN 350.3-25-NI	25	8.5	15	8	M8	27.1	22
GN.12056	GN 350.3-32-NI	32	13	20	10	M10	43.4	44
GN.12061	GN 350.3-45-NI	45	20	30	12.5	M16	84	90
GN.12066	GN 350.3-58-NI	58	29	38	16	M24	148	215
GN.12071	GN 350.3-70-NI	70	36	48	20	M30	225	362
GN.12076	GN 350.3-80-NI	80	44	61	20	M36	323	427
GN.12086	GN 350.3-105-NI	105	58	78	25	M48	546	930

Machine elements