

## I.147 | Tapered handles

Duroplast

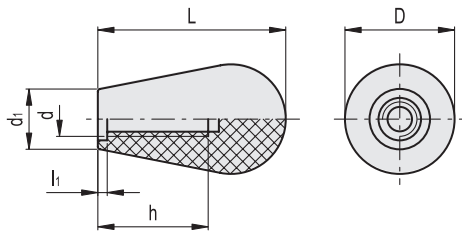


### MATERIAL

Phenolic based (PF) Duroplast, black colour, glossy finish.

### STANDARD EXECUTION

Threaded blind hole.



| Code  | Description  | D  | L  | d   | d1 | h  | li  | △  |
|-------|--------------|----|----|-----|----|----|-----|----|
| 19801 | I.147/40-M6  | 24 | 40 | M6  | 14 | 25 | 3   | 16 |
| 19802 | I.147/40-M8  | 24 | 40 | M8  | 14 | 28 | 3.5 | 14 |
| 19901 | I.147/50-M8  | 29 | 47 | M8  | 16 | 28 | 3.5 | 25 |
| 19902 | I.147/50-M10 | 29 | 47 | M10 | 16 | 28 | 3.5 | 24 |
| 20001 | I.147/60-M10 | 35 | 60 | M10 | 19 | 35 | 8   | 46 |
| 20002 | I.147/60-M12 | 35 | 60 | M12 | 19 | 35 | 8   | 44 |
| 20101 | I.147/75-M14 | 39 | 77 | M14 | 22 | 45 | 6   | 72 |

## I.149 | Tapered handles

Duroplast

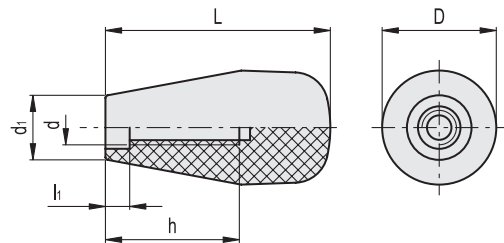


### MATERIAL

Phenolic based (PF) Duroplast, black colour, glossy finish.

### STANDARD EXECUTION

Threaded blind hole.



| Code   | Description  | D  | L  | d   | d1 | h  | li | △  |
|--------|--------------|----|----|-----|----|----|----|----|
| 120035 | I.149/65-M10 | 34 | 67 | M10 | 19 | 40 | 8  | 56 |
| 120055 | I.149/85-M10 | 34 | 86 | M10 | 20 | 48 | 7  | 72 |



Fixed & Revolving handles