


# 7.62mm screwless terminal blocks

## Product overview

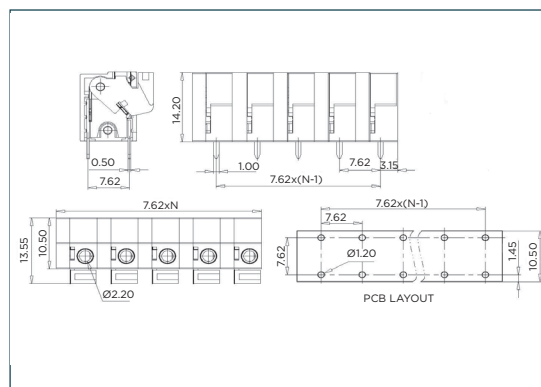
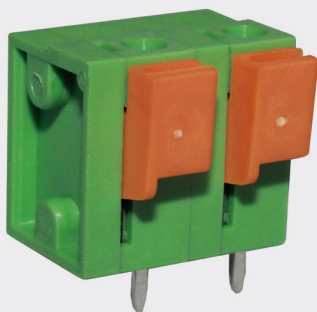
- Interlocking modules
- Easily breakable to desired number of poles
- Guided pin alignment
- Choice of vertical or horizontal cable entry
- Moulded in green UL94-V0 PA66
- 0.34-2.5mm<sup>2</sup> cable (22-14AWG)
-  approved

### SPECIFICATION

Rating	10A/300V
Insulation withstand voltage	AC2500V/1 min
Insulation resistance	500M $\Omega$ at DC500V
Operating temperature	-40°C to +115°C
Moulding	UL94-V0 PA66
Pin/contact	Tin plated brass
Recommended PCB hole size	1.2mm

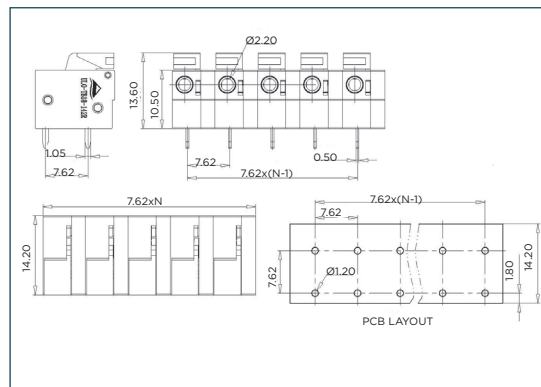
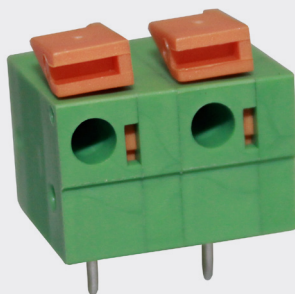
PART NO.	POLES	LENGTH
CSTBP762V/2	2	17.8mm
CSTBP762V/3	3	25.4mm
CSTBP762V/4	4	33.0mm
CSTBP762V/5	5	40.6mm
CSTBP762V/6	6	48.3mm
CSTBP762V/7	7	55.9mm
CSTBP762V/8	8	63.5mm
CSTBP762V/9	9	71.1mm
CSTBP762V/10	10	78.7mm
CSTBP762V/11	11	86.4mm
CSTBP762V/12	12	94.0mm

CSTBP762V



PART NO.	POLES	LENGTH
CSTBP762H/2	2	17.8mm
CSTBP762H/3	3	25.4mm
CSTBP762H/4	4	33.0mm
CSTBP762H/5	5	40.6mm
CSTBP762H/6	6	48.3mm
CSTBP762H/7	7	55.9mm
CSTBP762H/8	8	63.5mm
CSTBP762H/9	9	71.1mm
CSTBP762H/10	10	78.7mm
CSTBP762H/11	11	86.4mm
CSTBP762H/12	12	94.0mm

CSTBP762H



## KEY FEATURES

Dual row pins | Screwless actuated cage terminals | Modular design



081

TERMINAL STRIPS

095

WIRE TO BOARD  
CONNECTORS

100

CIRCULAR  
CONNECTORS

151

IP68 CONNECTORS

158

INTERFACE  
MODULES AND  
RELAY BASES