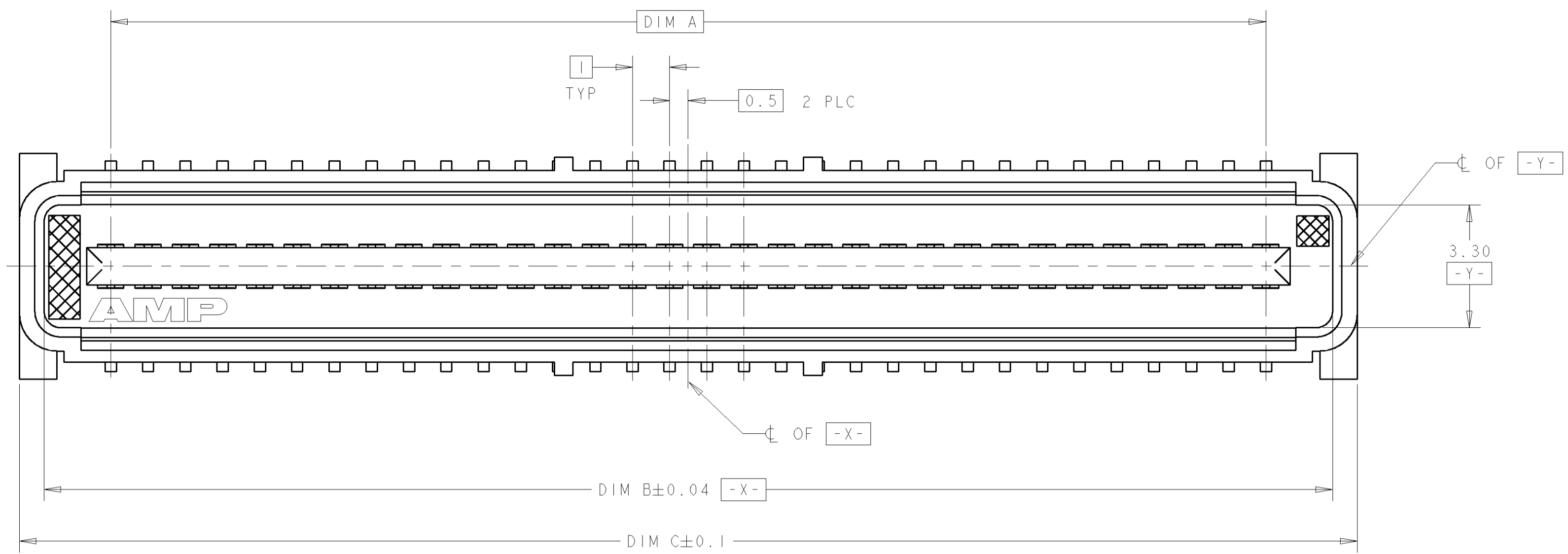
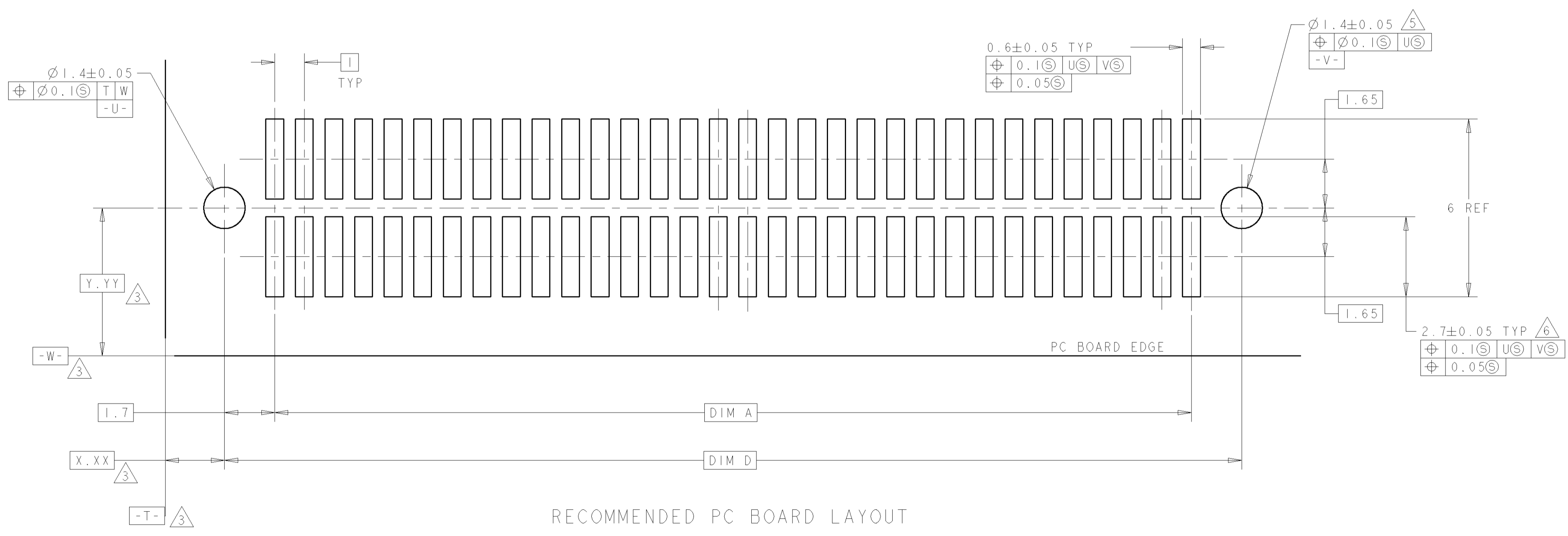
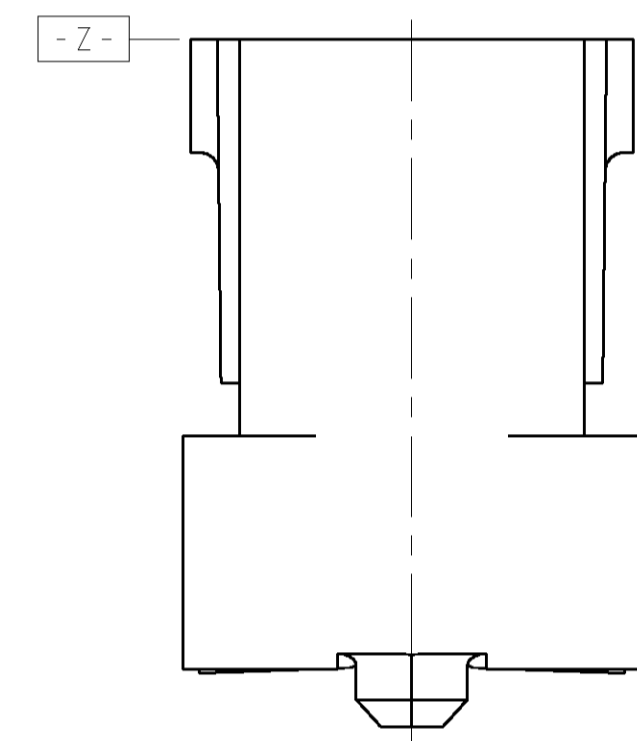
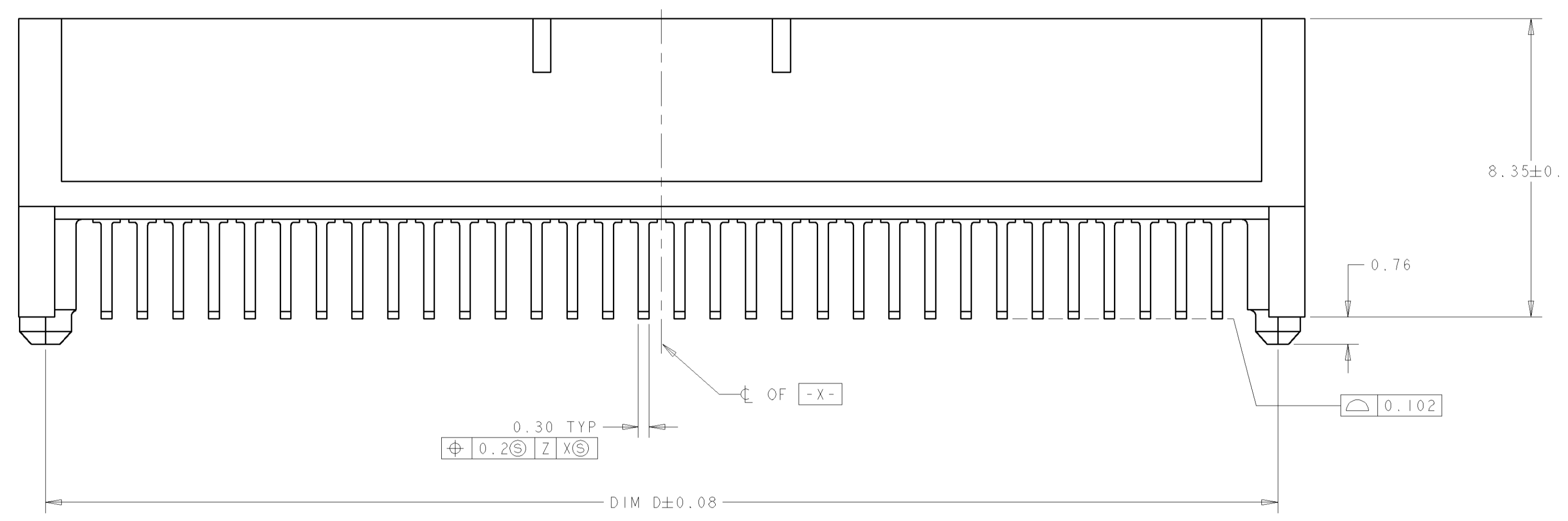


REVISONS		DATE	BY	APPD
0	REV PER EC 0512-0235-04	30SEP2004	BC	RW



- 1. HOUSING MATERIAL: LIQUID CRYSTAL POLYMER. COLOR; BLACK. CONTACT MATERIAL: PHOSPHOR BRONZE.
- 2. CONTACT FINISH: 0.00381 MINIMUM MATTE TIN PER ASTM B 545 ON SOLDER AREA, 0.00076 MINIMUM GOLD PER ASTM B 488 ON MATING AREA, BOTH OVER 0.00127 MINIMUM NICKEL PER SAE-AMS-QQ-N-290 ON ENTIRE CONTACT.
- 3. DATUM LOCATIONS AND BASIC DIMENSIONS TO BE ESTABLISHED BY THE CUSTOMER. CONSULT AMP ENGINEERING WHEN PLACING MULTIPLE CONNECTORS ON A PC BOARD.
- 4. PACKAGED IN TAPE ON REELS PER EIA-841.
- 5. 1.5±0.05 DIAMETER HOLE SHOULD BE USED IF PLACED ON PCB WITH VACUUM PLACEMENT EQUIPMENT.
- 6. SHORTER SOLDER LANDS MAY BE USED PER EIA 700AAAB, HOWEVER 2.7 LENGTH ASSURES OPTIMUM SOLDER FILLET.
- 7. CONTACT FINISH: 0.00381 MINIMUM MATTE TIN PER ASTM B 545 ON SOLDER AREA, 0.00127 MINIMUM GOLD PER ASTM B 488 ON MATING AREA, BOTH OVER 0.00127 MINIMUM NICKEL PER SAE-AMS-QQ-N-290 ON ENTIRE CONTACT.



RECOMMENDED PC BOARD LAYOUT

FINISH	DIM D	DIM C	DIM B	DIM A	MATING CONNECTOR	STACK HGTS	POS	PART NO
7	44.4	45.9	44.58	41	5120524-2	15	84	1-5120527-2
7	44.4	45.9	44.58	41	5120523-2	13	84	1-5120527-2
7	44.4	45.9	44.58	41	5120603-2	12	84	1-5120527-2
7	44.4	45.9	44.58	41	5120521-2	10	84	1-5120527-2
7	34.4	35.9	34.58	31	5120524-1	15	64	1-5120527-1
7	34.4	35.9	34.58	31	5120523-1	13	64	1-5120527-1
7	34.4	35.9	34.58	31	5120603-1	12	64	1-5120527-1
7	34.4	35.9	34.58	31	5120521-1	10	64	1-5120527-1
2	44.4	45.9	44.58	41	5120524-2	15	84	5120527-2
2	44.4	45.9	44.58	41	5120523-2	13	84	5120527-2
2	44.4	45.9	44.58	41	5120603-2	12	84	5120527-2
2	44.4	45.9	44.58	41	5120521-2	10	84	5120527-2
2	34.4	35.9	34.58	31	5120524-1	15	64	5120527-1
2	34.4	35.9	34.58	31	5120523-1	13	64	5120527-1
2	34.4	35.9	34.58	31	5120603-1	12	64	5120527-1
2	34.4	35.9	34.58	31	5120521-1	10	64	5120527-1

DIMENSIONS:		TOLERANCES UNLESS OTHERWISE SPECIFIED:		DWN B CARBO 30SEP04		Tyco Electronics Harrisburg, PA 17105-3608			
mm	0 PLC ±	1 PLC ±0.03	2 PLC ±0.03	3 PLC ±0.03	4 PLC ±	APVD R WERTZ 30SEP04	NAME R WERTZ 30SEP04		
	±	±	±	±	±	PRODUCT SPEC	PLUG ASSY, 1.0mm FH (IEEE 1386)		
						APPLICATION SPEC	CONNECTOR		
MATERIAL	FINISH	WEIGHT	SCALE	10:1	SHEET	1	OF	1	
	SEE TABLE								
CUSTOMER DRAWING		SCALE		10:1		SHEET		1	