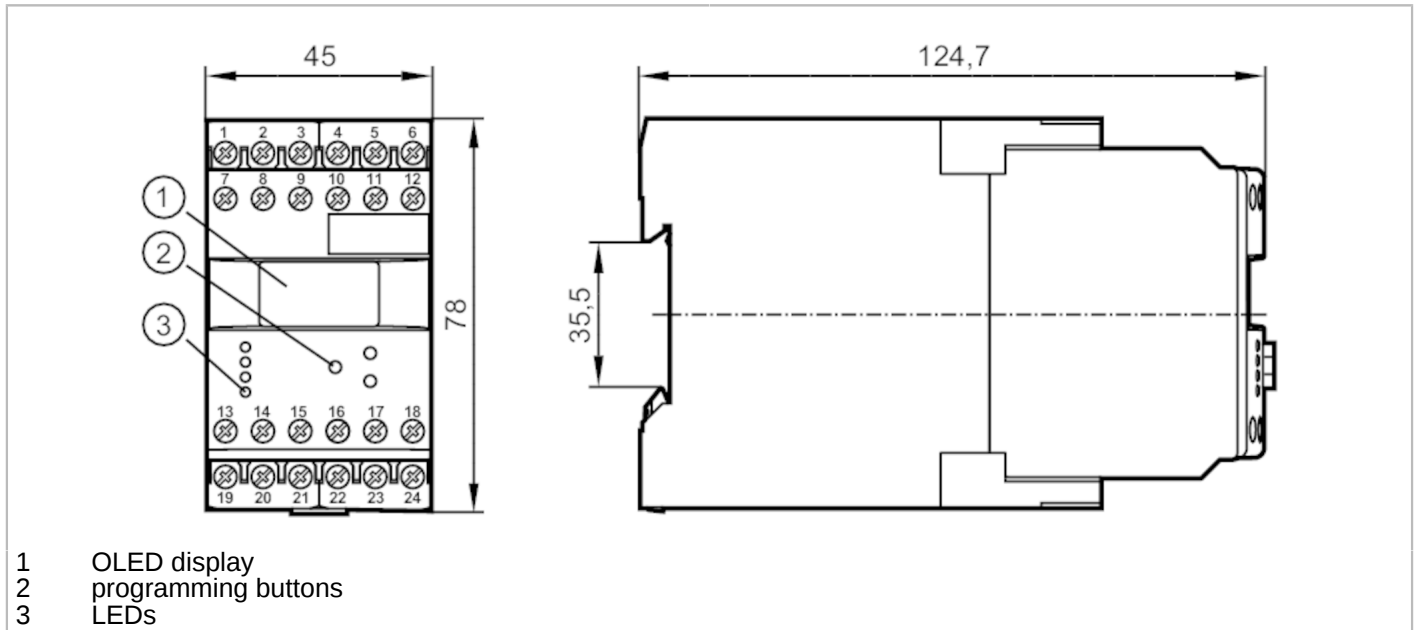


DR2503



Evaluation unit for direction and speed monitoring

MONITOR/FD-1 /110-240VAC/DC



- 1 OLED display
- 2 programming buttons
- 3 LEDs



Product characteristics

Housing	housing for DIN rail mounting
Dimensions [mm]	78 x 45 x 124.7

Application

Application	pulse evaluation system with microprocessor for direction monitoring and frequency; rotational speed and speed
-------------	--

Electrical data

Nominal voltage AC [V]	110...240
Nominal voltage DC [V]	27
Nominal voltage tolerance [%]	< 10
Nominal voltage tolerance 2 [%]	20...10
Nominal frequency AC [Hz]	50...60
Power consumption [W]	3
Auxiliary energy for sensors DC [V]	19.6...27.7; (SELV, ≤ 150 mA)

Inputs / outputs

Number of inputs and outputs	Number of relay outputs: 2
------------------------------	----------------------------

Outputs

Number of relay outputs	2
Contact rating	6 A (250 V AC); B300, R300

Operating conditions

Ambient temperature [°C]	-40...60
Storage temperature [°C]	-40...85
Max. relative air humidity [%]	80; (40 °C: 50 %)
Protection	IP 50
Protection rating terminals	IP 20



Evaluation unit for direction and speed monitoring

MONITOR/FD-1 /110-240VAC/DC

Tests / approvals		
EMC	EN 61010	2011
	EMV 89/336/EWG	
	EN 61000-6-2	2005
	EN 61000-6-4	2007
Mechanical data		
Weight	[g]	380
Housing		housing for DIN rail mounting
Dimensions	[mm]	78 x 45 x 124.7
Materials		plastics
Displays / operating elements		
Display		OLED display, 128 x 64 pixels luminous
	switching status	LED, green
Remarks		
Remarks	The unit complies with overvoltage category II; degree of soiling 2	
Electrical connection		
dual-chamber terminals: 2 x ...2.5 mm ² ; AWG 14		
1	DC supply voltage (L-)	
2	DC supply voltage (L+)	
3	supply transistor outputs (L+)	
4	sensor signal 1 pnp	
5	DC Sensor supply (L+)	
6	DC Sensor supply (L-)	
7	AC supply voltage (L)	
8	AC supply voltage (N)	
9	not used	
10	sensor signal 1 npn	
11	sensor signal 2 pnp	
12	sensor signal 2 npn	
13	relay 1 common	
14	relay 1 normally open	
15	relay 1 normally closed	
16	transistor output 1 pnp	
17	reset 1 pnp	
18	reset 2 pnp	
19	relay 2 common	
20	relay 2 normally open	
21	relay 2 normally closed	
22	not used	
23	not used	
24	transistor output 2 pnp	