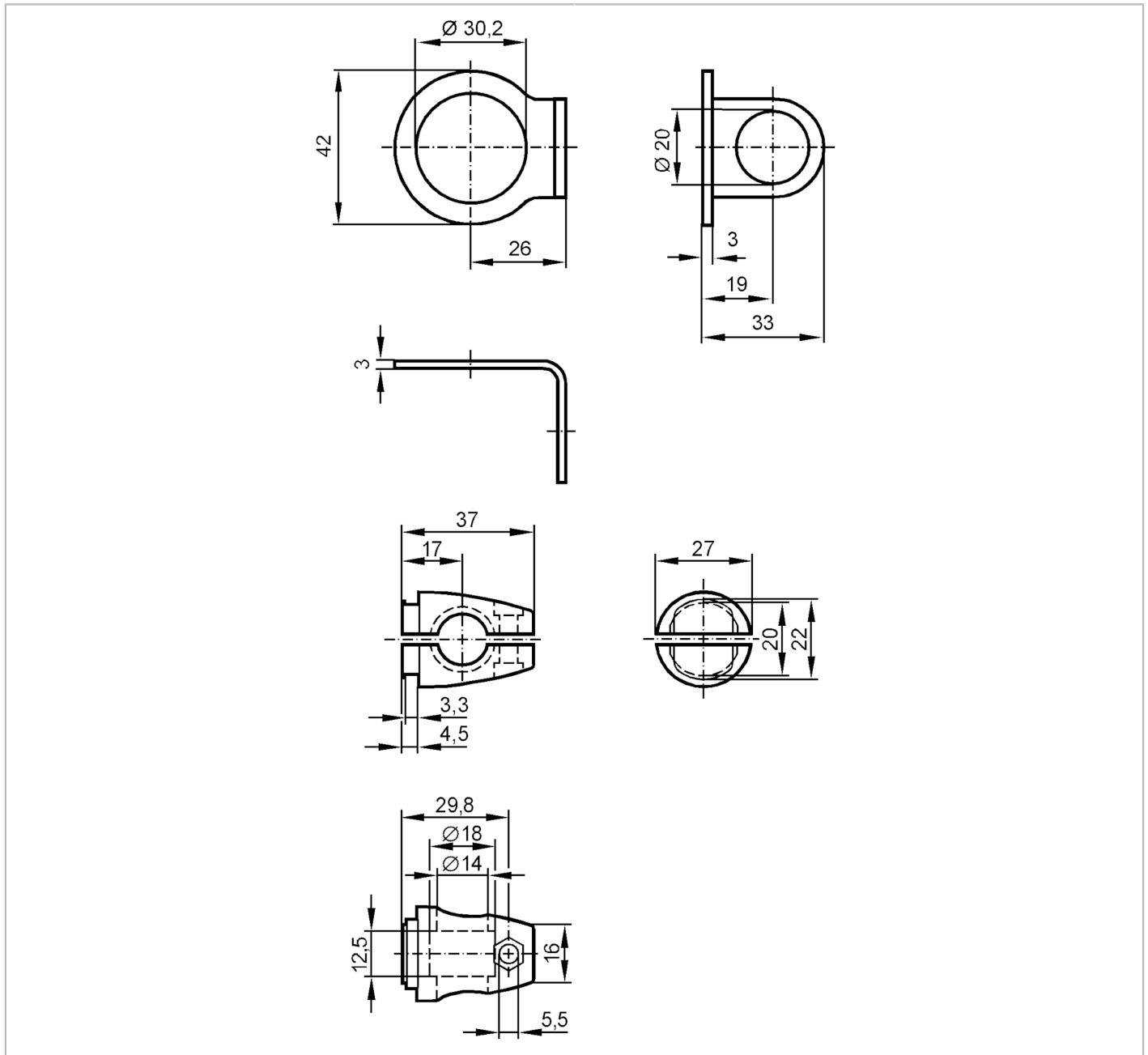


# E20873



## Mounting set for position sensors

SYSTEM COMPONENT M30 BOLT



Application	
Design	clamp mounting
Mechanical data	
Weight [g]	202.5
Type of mounting	free-standing; (M12)
Dimensions [mm]	$\varnothing 30.2$
Materials	fixture: stainless steel (1.4571/316Ti); Clamp: diecast zinc
Accessories	
Accessories (supplied)	screw: 1 x M12 x 55
Remarks	
Pack quantity	1 pcs.