




INSERT CAP FOR PUSHBUTTON AND ILLUMINATED  
 PUSHBUTTON RAISED CLEAR WITH BLACK  
 LETTERING, WITH SYMBOL: AUTOMATIC AIR  
 DISCHARGE



General technical data:

Product type designation		Insert cap
Shape of the name plate for command devices		round
Color of the label		clear
Outer diameter	mm	18
Printed marking		without text
Printed ISO symbols		AUTOMATIC PROCESS

Certificates/ approvals:

General Product Approval	Declaration of Conformity	Test Certificates	other
 UL		 EG-Konf.	<a href="#">Special Test Certificate</a> <a href="#">Environmental Confirmations</a> <a href="#">Confirmation</a>

<p>other</p> <p><a href="#">other</a></p>
---

Further information

Information- and Downloadcenter (Catalogs, Brochures,...)  
<http://www.siemens.com/industrial-controls/catalogs>

**Industry Mall (Online ordering system)**

<http://www.siemens.com/industrymall>

**Cax online generator**

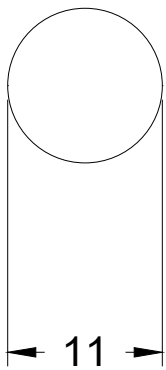
<http://support.automation.siemens.com/WW/CAXorder/default.aspx?lang=en&mfb=3SB29015QL>

**Service&Support (Manuals, Certificates, Characteristics, FAQs,...)**

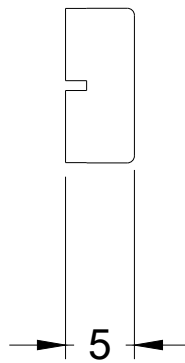
<http://support.automation.siemens.com/WW/view/en/3SB29015QL/all>

**Image database (product images, 2D dimension drawings, 3D models, device circuit diagrams, EPLAN macros, ...)**

<http://www.automation.siemens.com/bilddb/index.aspx?attID9=3SB29015QL&lang=en>



last modified:



09.03.2015