

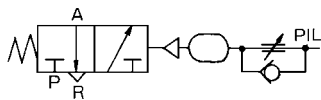
# Related Products VR2110

## Time Delay Valve

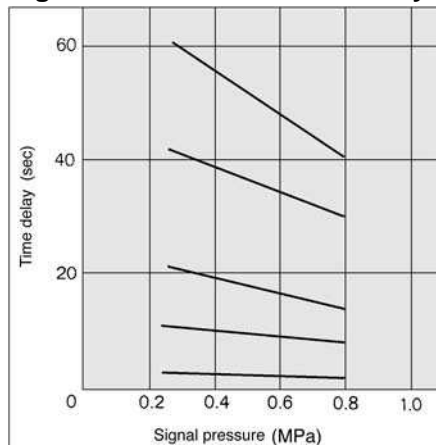
Combination of adjustable orifice and fixed flow allows transmission of a pneumatic signal after a fixed time period.



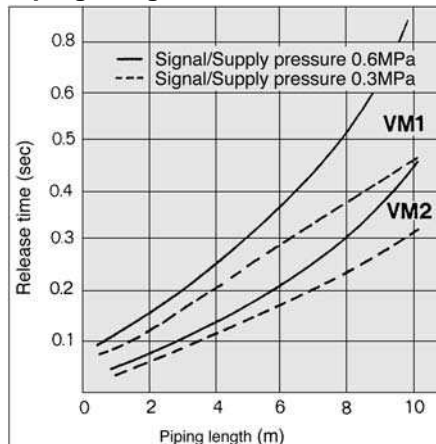
Symbol



### Signal Pressure vs. Time Delay



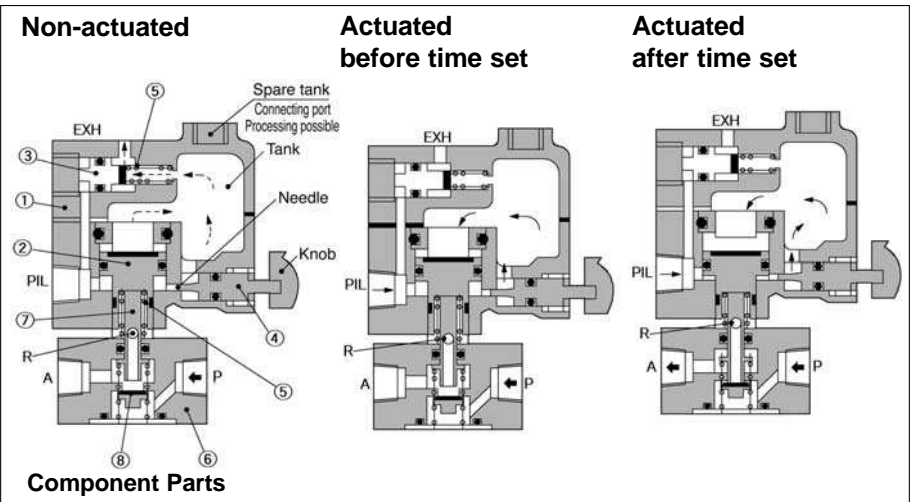
### Piping Length vs. Release Time



### Model/Specifications

EVR2110-01	
Supply pressure	0 to 1.0MPa
Signal pressure	0.25 to 0.8MPa
Time delay	0.5 to 60s
Repeatability	±10% F.S.
Operating and fluid temperature	-5 to 60°C (No freezing)
Effective area(Nl/min)	2.5mm <sup>2</sup> (124.81)
Port size	1/8
Weight	500g

### Construction



No.	Description	Material	Notes	No.	Description	Material	Notes
①	Body	Aluminum alloy	Metallic plated	⑤	Spring	Steel	
②	Piston	Brass, NBR	Rubber lined	⑥	Body	Zinc alloy	Metallic plated
③	Piston	Brass, NBR	Rubber lined	⑦	Plunger	Stainless steel	
④	Needle	Brass		⑧	Valve	Brass, NBR	Rubber lined

### Dimensions

