

Data sheet Actuator.

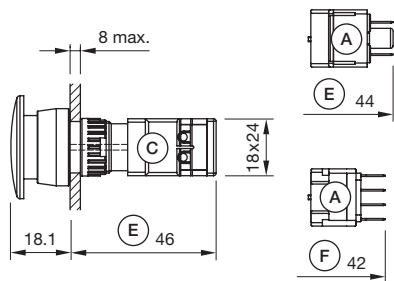
Part No.: 61-1140.0

Technical data

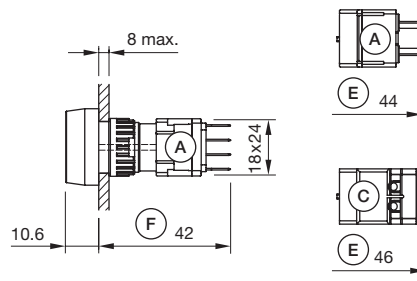


Operating Travel	3 mm
Lens illumination	illuminative
Front bezel colour	Black
Front bezel material	Plastic
Housing colour	Black
Housing material	Plastic, according to UL 94 V0, self-extinguishing
Weight	0.005 kg
IP Protection	IP67 front side, according to EN IEC 60529, IP40 rear side, according to EN IEC 60529
Switching action	Momentary
Operating force	3 ... 5 N snap-action switching element, 3.5 ... 11 N slow-make switching element
Mechanical lifetime	According to DIN/IEC 60512-5-6 and EN/IEC 60947-5-1, 2 Mio. cycles of operation
Tightening torque	Max. 0.5 Nm

Dimensions

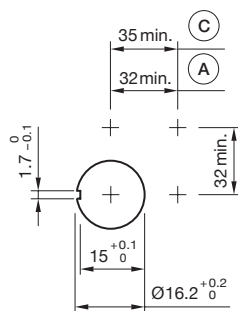


A = Plug-in terminal 2.8 mm x 0.5 mm
 C = Screw terminal
 E = Slow-make switching element
 F = Snap-action switching element

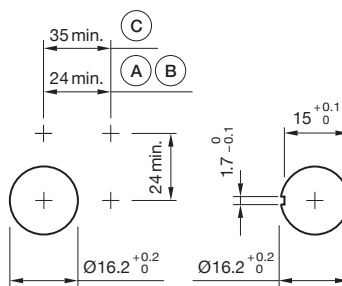


A = Plug-in terminal 2.8 mm x 0.5 mm
 C = Screw terminal
 E = Slow-make switching element
 F = Snap-action switching element

Mounting cut-outs



A = Solder/Plug-in terminal 2.8 mm x 0.5 mm
 C = Screw terminal



A = Solder/Plug-in terminal 2.8 mm x 0.5 mm
 B = Solder terminal
 C = Screw terminal

