

Handle Series FG4-LH

Functional handle with a three-coloured illuminatable handle ledge. The LED colours red, yellow and green can be used to display the current operating status of the machine for example.

Material and surface:

Handle shanks made of glass ball reinforced polyamide PA 6, black, similar to RAL 9005, semi-matte with a fine-grain structure.
Threaded bushes made of brass.
Handle ledge made of extruded aluminium AlMgSi 0.5; glass ball blasted and anodized in natural colour.
Illuminatable plastic insert made of translucent PMMA.

Function elements:

One push button, as a change-over contact.

Connection:

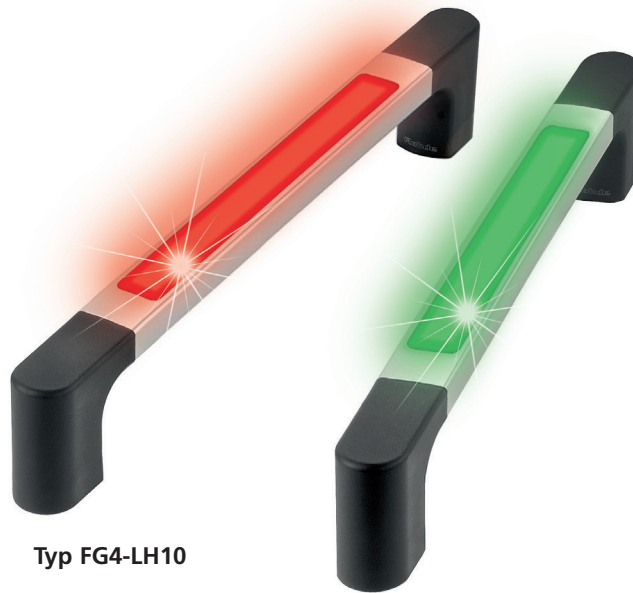
5 m connection cable leading out of the mounting surface of the handle shank.
Version with an 8-pole connector on request.

Protection class:

IP 65.

Note:

Other handle lengths and switching element assignments, as well as white handle ledge lighting on request.

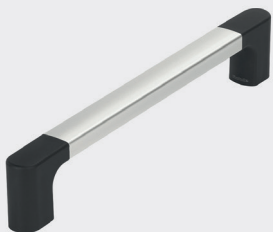


Typ FG4-LH10



Typ FG4-LH11

Connection



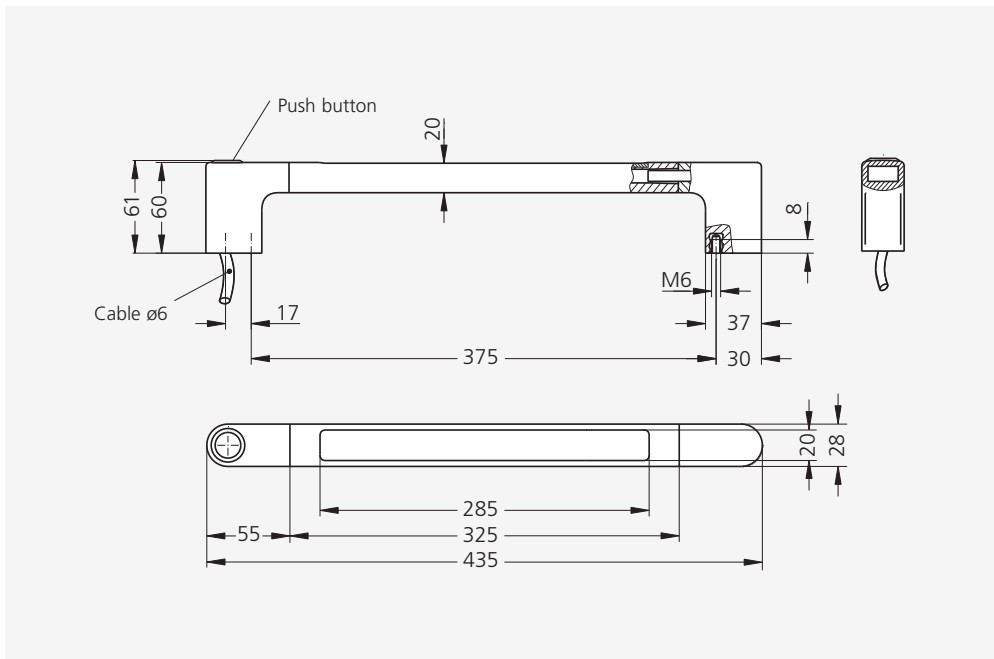
MS-02

Counter-handle without any electrical function elements, see page 33.

Typ		FG4-LH10	FG4-LH11
		without push button, with LED-illumination	with push button and with LED-illumination
A*	L	Order no.	Order no.
375	435	FG4-LH10.375.11	FG4-LH11.375.11

* Other handle lengths on request




Technical data

	FG4-LH10	FG4-LH11
Typ	without push button	with push button
Push button (1 change-over contact)	without	
LED board		
Push button	-	24 V AC/DC max. 1 A
Operating voltage LED	24 V DC (12 V DC optional)	
Connection type	cable 8-pole	
Mounting cutout		

All dimensions in mm.

