

Micro-Lock Plus Connector System >

Ideal for compact applications, the Micro-Lock Plus Connector System provides electrical and mechanical reliability in a high-temperature design that meets other industry requirements

FEATURES AND ADVANTAGES

Smallest 1.25mm-pitch connector with positive lock

Delivers secure mating retention without sacrificing compactness

Single and dual rows, 2 to 42 circuits, vertical and horizontal plug configurations

Offer design flexibility

Wide positive latch that delivers audible click

Provides secure mating retention. Ensures proper mating

Inner lock for dual-row versions; outer lock for single-row versions

Strengthen lock for more reliable connection

Robust metal solder tabs

Provide secure PCB retention and strain relief to solder joints

Dual-contact terminal design

Offers secure contact and terminal retention

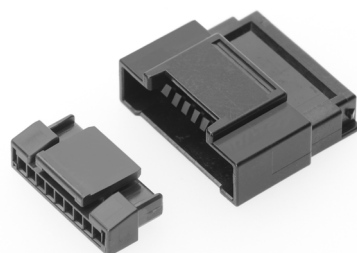
Withstands up to 105°C operating temperature

Meets other industry requirements. Withstands harsh environments

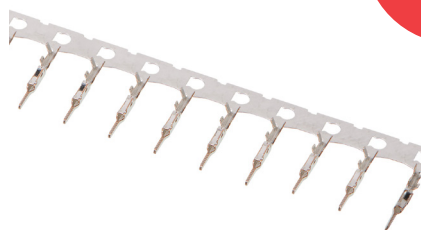


Micro-Lock Plus 1.25mm Wire-to-Board Connector

**NEW
FEATURE
WIRE-TO-WIRE**



Micro-Lock Plus 1.25mm Wire-to-Wire Single-Row Connector; 2 to 9 circuits



Micro-Lock Plus 1.25mm Terminal

ORDERING INFORMATION

Series Number	Pitch (mm)	Component	Plating	AWG/Allowable Current (current rating max.- two circuits)	Circuits	Rows	Cover Type
214525	1.25	Wire-to-Wire Plug Housing	Tin	26/ 3.2A 28/ 2.7A 30/ 2.2A	2 to 9	Single	-
214524	1.25	Wire-to-Wire Plug Crimp Terminal	Tin		-	-	-

Micro-Lock Plus Connector System >

FEATURES AND ADVANTAGES

Single-row plug in vertical and horizontal configurations, 2 to 16 circuits

Offer design flexibility

SMT terminals

Prevent whiskering for a clean and uninterrupted signal. Supports terminal ruggedness and reliability

Robust metal solder tabs

Provide secure PCB retention and strain relief to solder joints

Low-halogen and high-temperature capabilities

Withstand harsh environments

2.00mm-pitch connector with positive lock

Delivers secure mating retention without sacrificing compactness

Wide positive latch that delivers audible click

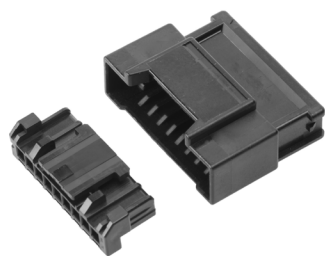
Provides secure mating retention. Ensures proper mating

Outer lock

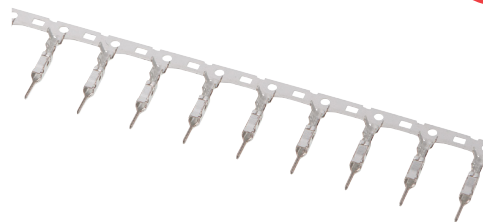
Strengthens lock for more reliable connection



Micro-Lock Plus 2.00mm Wire-to-Board Connector



Micro-Lock Plus 2.00mm Wire-to-Wire Single-Row Connector; 2 to 9 circuits



Micro-Lock Plus 2.00mm Terminal

ORDERING INFORMATION

Series Number	Pitch (mm)	Component	Plating	AWG/Allowable Current (current rating max.- two circuits)	Circuits	Rows	Cover Type
213719	2.00	Wire-to-Wire Plug Housing	Tin	22/ 4.7A 24/ 3.9A 26/ 2.9A	2 to 9	Single	-
213720	2.00	Wire-to-Wire Plug Crimp Terminal	Tin		-	-	-

Micro-Lock Plus Connector System >

MARKETS AND APPLICATIONS

Datacom

Servers

Consumer

- White goods
- Gaming machines
- Drones
- Air conditioners
- Laser printers
- Vacuum cleaners
- Desktop PCs
- Power tools

Automotive

- Steering wheel, paddle shift, combination switches
- Internal connection with other units



Air Condition



White Goods



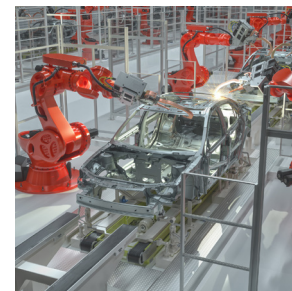
Steering Wheel Switches



Servers



Drones



Industrial Automation

SPECIFICATIONS 1.25MM

REFERENCE INFORMATION

- Packaging: Reel (Terminal); Embossed (Header Assembly); Bag (Receptacle Housing);
- Mates with: Micro-Lock Plus Connectors
- Designed In: Millimeters
- RoHS: Yes
- Low Halogen: Yes *Depends on series number

ELECTRICAL

- Voltage (max.): 50V
- Current (max.): 3.6A/Single (2 circuit/AWG 26) 2.4A/Dual (8 circuit/AWG 26)
- Contact Resistance (max.): 20 milliohms
- Dielectric Withstanding Voltage: 500V AC
- Insulation Resistance (min.): 100 Megohms

PHYSICAL

- Housing: Receptacle – PBT Header – PA
- Crimp terminal: Copper alloy, Tin or Au plating
- Header pin: Copper alloy, Tin Bismuth or Au plating
- Operating Temperature: -40 to +105°C

MECHANICAL

- Durability (max.): 30 Cycles
- Crimp Terminal Insertion Force (max.): 4.9N
- Crimp Terminal Retention Force (min.): 9.8N
- Crimping Pull Out Force: 19.6N (min.) (AWG 26)
- Housing Lock Strength: 68.6N(min.) (Single 14-16 circuits) / 98.0N(min.) (Dual 38-42 circuits)
- Durability (max.): 30 Cycles

Single

AWG#	Amps [A]		
	2-circuit	8-circuit	16-circuit
26	3.6	2.4	2.2
28	3.1	2.1	1.8
30	2.8	1.8	1.5

Dual

AWG#	Amps [A]				
	8-circuit	16-circuit	24-circuit	32-circuit	42-circuit
26	2.4	1.8	1.7	1.6	1.5
28	2.1	1.6	1.5	1.4	1.3
30	1.8	1.4	1.3	1.2	1.1

Micro-Lock Plus Connector System

SPECIFICATIONS 2.00MM

REFERENCE INFORMATION

Packaging: Reel (Terminal);
 Embossed (Header Assembly);
 Bag (Receptacle Housing);
 Mates With: Micro-Lock Plus Connectors
 Designed In: Millimeters
 RoHS: Yes
 Low Halogen : Yes

ELECTRICAL

Voltage (max.): 250V
 Current (max.): 4.7A (2 circuit/AWG 22)
 Contact Resistance (max.): 10 Milliohms
 Dielectric Withstanding Voltage: 800V AC
 Insulation Resistance (min.): 1000 Megaohms

MECHANICAL

Crimp Terminal Insertion Force (max.): 9.8N
 Crimp Terminal Retention Force (min.): 25.0N
 Crimping Pull Out Force: 39.2N (min.) (AWG 22)
 Housing Lock Strength: 80N (min.) (6-16 circuits)
 Durability (max.): 30 Cycles

PHYSICAL

Housing:
 Receptacle—PBT
 Header—PA
 Header Pin: Copper Alloy, Tin
 Crimp Terminal: Copper Alloy, Tin
 Header Pin: Copper Alloy, Tin
 Operating Temperature: -40 to +105°C

AWG#	Amps [A]		
	2-circuit	8-circuit	16-circuit
22	4.7	3.5	3.4
24	3.9	3.1	3.0
26	2.9	2.7	2.6

Micro-Lock Plus Connector System

ORDERING INFORMATION

Series No.	Pitch (mm)	Component	Plating	AWG/Allowable Current*	Circuits	Rows	Cover Type			
505431-1000	1.25	Receptacle Terminal	Tin	26 28 30	-	-	-			
505431-1100		Receptacle Terminal	Gold, 0.10µm		-	-	-			
505431-1200		Receptacle Terminal	Gold, 0.38µm		-	-	-			
505431-1300		Receptacle Terminal	Gold, 0.76µm		-	-	-			
505565-XX01		Receptacle Housing	-		26 28 30	2 to 16	Single	No		
505567-XX31		Right-Angle Header	Gold, 0.38µm					No		
505567-XX51		Right-Angle Header	Gold, 0.76µm					No		
505567-XX71		Right-Angle Header	Tin-Bismuth					No		
505567-XX81		Right-Angle Header	Gold, 0.10µm					No		
505568-XX31		Vertical Header	Gold, 0.38µm					Yes		
505568-XX51		Vertical Header	Gold, 0.76µm					Yes		
505568-XX71		Vertical Header	Tin-Bismuth					Yes		
505568-XX81		Vertical Header	Gold, 0.10µm					Yes		
505432-XX01		Receptacle Housing	-					8 to 42	Dual	No
505433-XX21		Vertical Header	Gold, 0.38µm							No
505433-XX31		Vertical Header	Gold, 0.38µm							Yes
505433-XX41		Vertical Header	Gold, 0.76µm							No
505433-XX51		Vertical Header	Gold, 0.76µm							Yes
505433-XX61		Vertical Header	Gold, 0.10µm			No				
505433-XX71		Vertical Header	Tin-Bismuth			No				
505433-XX81		Vertical Header	Tin-Bismuth			Yes				
505433-XX91		Vertical Header	Gold, 0.10µm			Yes				
505448-XX31		Right-Angle Header	Gold, 0.38µm			No				
505448-XX51		Right-Angle Header	Gold, 0.76µm			No				
505448-XX71		Right-Angle Header	Tin-Bismuth			No				
505448-XX91		Right-Angle Header	Gold, 0.10µm			No				
505572-1000		2.00	Receptacle Terminal			Tin	22 24 26			-
505570-XX01			Receptacle Housing			-		22 24 26	2 to 16	Single
505578-XX71	Right-Angle Header		Tin	No						
505575-XX71	Vertical Header		Tin	No						
505575-XX81	Vertical Header		Tin	Yes						

*Allowable current is different for each wire gauge by combination.

www.molex.com/link/microlockplus.html