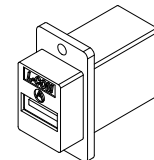
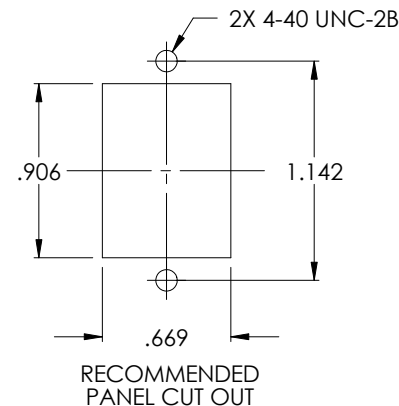
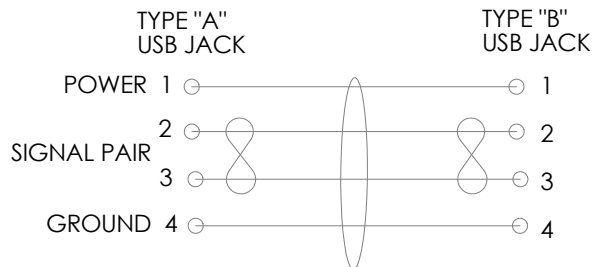
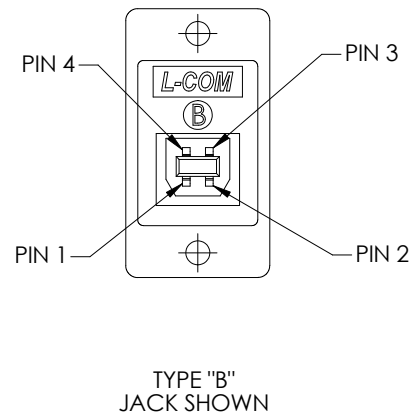
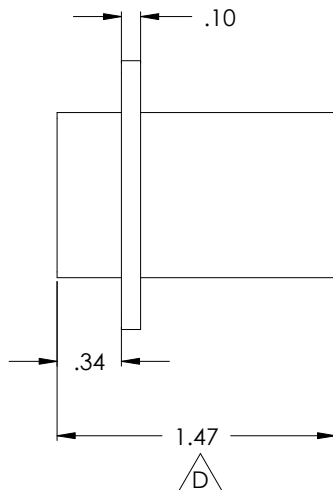
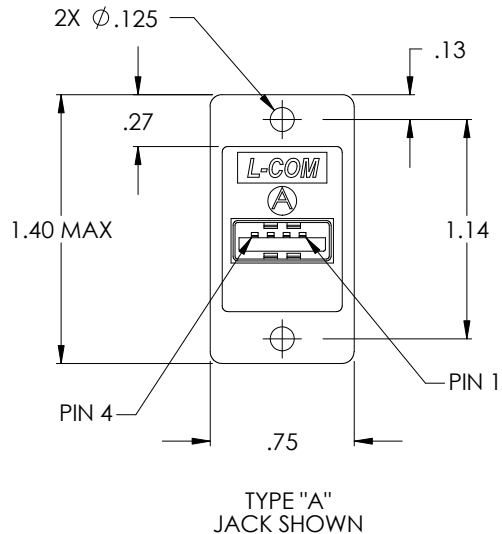


THE INFORMATION CONTAINED IN THIS DRAWING IS THE SOLE PROPERTY OF L-COM, INC. ANY REPRODUCTION IN PART OR WHOLE WITHOUT THE WRITTEN PERMISSION OF L-COM, INC. IS PROHIBITED.

REVISIONS			
REV	DESCRIPTION	DATE	APPROVED
A	RELEASED FOR PRODUCTION	05/04/01	MCCORMICK
B	ECN# 1313 PRODUCT VALIDATION, DELETED METRIC DIMENSIONS	02/27/03	DFF
C	ECN# 1605 ADDED COMPONENT SPECIFICATION TABLE	12/09/03	MCCORMICK
D	ECN#2082: CORRECTING LENGTH DIM.	05/24/05	M.LAHEY



Component Specifications	
<b>Material</b>	
Housing	ABS 94V-0 Rating
Connector	Plastic; PBT with Glass Fiber
Contact	Brass
Shell	Brass
PCB	Epoxy Glass FP-4 94V-0 Rating
<b>Finish</b>	
Housing	Color; Ivory
Contact	Gold 30 Micro Inch
Shell	Nickel
<b>Electrical</b>	
Current Rating	2 AMP Max
Voltage Rating	140 VDC
<b>Environmental</b>	
Operating Temperature	-20°C to +80°C

CS-133

UNLESS OTHERWISE SPECIFIED, DIMENSIONS ARE IN INCHES. TOLERANCES ARE:  
 X ±.1  
 XX ±.05  
 XXX ±.005  
 CABLE LENGTH TOLERANCE  
 <300" ±5% >300" ±2%

APPROVALS	DATE
DRAWN BY C.MCCORMICK	05/04/2001
CHECKED BY D.PARHAM	05/04/2001
APPROVED BY R.CARRICK	05/04/2001

CONFIGURATION DETAILS OF UNDIMENSIONED FEATURES MAY VARY

**L-com** 45 BEECHWOOD DRIVE  
 CONNECTIVITY PRODUCTS NORTH ANDOVER, MA 01845

PRODUCT DESCRIPTION  
**USB FEEDTHRU COUPLER**

DRAWING TITLE  
**OUTLINE DRAWING**

SIZE	FSCM NO.	DWG. NO.	REV.
<b>A</b>	<b>43321</b>	ECF504-UAB-OD1	<b>D</b>

SCALE: NONE CAD FILE: ECF504-UAB-OD1.SLDDRW SHEET 1 OF 1