

# Edge Control Enclosure Kit

The edge control Enclosure kit provides a full enclosure for the Edge control.

quick access to all the I/O 's.



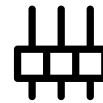
### Enclosure Temperature

The Edge Control Enclosure Kit is operating at industrial temperature ranges (-40 °C to +85 °C) that doesn't require



### Enclosure IP Standard

The cover provides IP40 which protects the Mounted (Not included) Edge Control protection against solid objects over 1mm.  
Note: Does not protect against Moisture.




### Breakout LCD Display + Push Button

The Kit includes a breakout board with a LCD display (NDS1602A) and a Push-button so you can display data and

Note: Included coverage for the LCD display, with a fixed assembly on the device cover. (See pictures)

## Tech Specs

This is the technical

<b>Standards</b>	<b>Protection</b>			
	<b>Mounting System</b>	DIN rail		
<b>Operating Temperatures</b>	<b>Min</b>	-40° C (104° F)		
	<b>Max</b>	85° C (185° F)		
<b>Weight</b>	165 g			
<b>Dimensions</b>	<b>Width</b>	11 mm		
	<b>Length</b>	9 mm		
	<b>Height</b>	6 mm		
<b>Included components</b>	<b>Breakout</b>	<b>LCD</b>	<b>ID</b>	NDS1602A
			<b>Rows</b>	 Help

## Arduino Edge Control Enclosure Kit

[Overview](#)[Essentials](#)[Tutorials](#)[Resources](#)[BUY NOW](#)**cable**

Display and Push-button

**Not included**

Edge Control

## Compatibility

### Software & Cloud

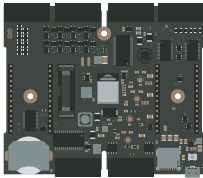
The following software tools allow you to program your board both online and offline.

[Help](#)

## Hardware

The hardware listed below is compatible with this product.

### Boards



Edge  
Control

## First Steps

### [Edge Control Quickstart Guide](#)

A quick guide to installing the Edge Control with the Arduino IDE.

## Suggested Libraries

### [Arduino Edge Control](#)

The official Arduino Library for the Edge Control.

### [Arduino Pro Tutorials](#)

## Arduino Basics

### [Built-in Examples](#)

Built-in Examples are sketches included in the Arduino IDE and demonstrate all basic Arduino commands.

### [Learn](#)

Discover interesting

## Language Reference

Arduino programming language can be divided in three main parts: functions, values (variables and constants), and structure.





## **Assembling the Enclosure Kit**

Learn how to assemble the enclosure kit for the Edge Control

[Assembly](#)[Getting started](#)

