

## Ejector for revolving centring points



### Application:

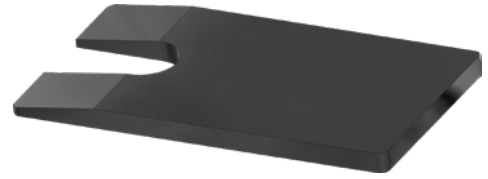
For ejecting exchangeable inserts.

### Execution:

- Hardened and ground.

### Delivery:

1x ejector for centring point.



<b>Art. no.</b>	<b>22146 020</b>
<b>Brand</b>	RÖHM
<b>Manufacturer Part Number</b>	61707
<b>For Morse taper size</b>	MK 2
<b>Gross Weight</b>	0.031 kg
<b>Product Group</b>	201

### EAN

4019208017334