

## Specifications

### Mechanical

|                             |                  |
|-----------------------------|------------------|
| Operating Force             | : 200 ±150       |
| Operating Temperature Range | : -10°C to +60°C |
| Storage Temperature Range   | : -20 to +70°C   |
| Electrical                  | : 10,000 cycles  |
| Rating                      | : 0.1A, 12V DC   |

### Electrical

|                            |                      |
|----------------------------|----------------------|
| Electrical Life            | : 10,000 cycles      |
| Non-Switching Rating       | : 100mA, 50V DC      |
| Switching Rating           | : 25mA, 24V DC       |
| Max. Contact Resistance    | : 100mΩ              |
| Min. Insulation Resistance | : 100MΩ (500V DC)    |
| Dielectric Strength        | : 500V AC / 1 minute |
| Circuit                    | : 1P2T, 1P3T         |

### Materials

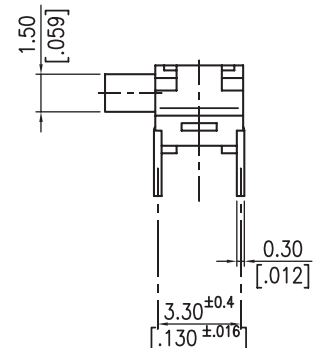
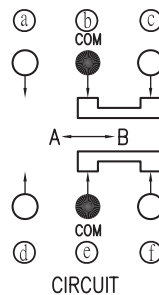
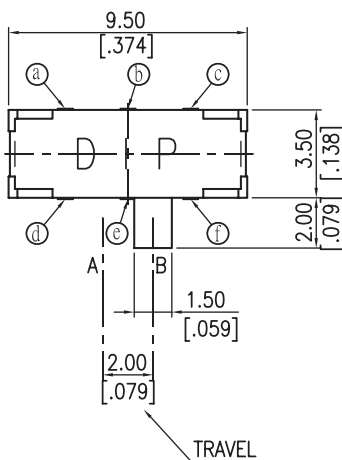
|          |                                      |
|----------|--------------------------------------|
| Cover    | : Stainless steel                    |
| Base     | : LCP high-temperature thermoplastic |
| Colour   | : Black                              |
| Actuator | : LCP thermoplastic                  |
| Colour   | : Black                              |
| Contact  | : Alloy copper                       |
| Terminal | : Brass C2680-H                      |

## Soldering Process

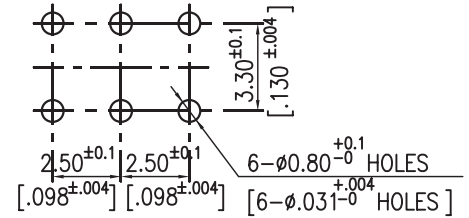
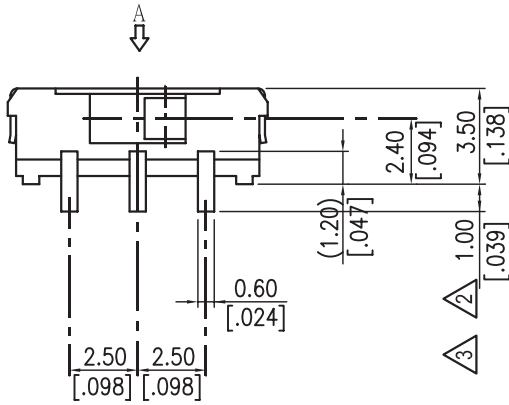
Hand Soldering : Use a soldering iron of 30 watts, controlled at 350°C approximately 5 seconds while applying solder

Reflow Soldering : When applying reflow soldering, the peak temperature or the reflow oven should be set to 260°C maximum

## Diagram



Dimensions : Millimeters (Inches)



P.C.B. LAYOUT  
(VIEW FROM THE DIRECTION A)

Dimensions : Millimeters (Inches)

Tolerance : ±0.2mm

## Part Number Table

| Description                                     | Part Number |
|---|-------------|
| Slide Switch, DPDT, On-On, Through Hole, 100mA  | MCLSS22     |
| Slide Switch, DPDT, Off-On, Through Hole, 100mA | MCLSS22P    |

**Important Notice :** This data sheet and its contents (the "Information") belong to the members of the AVNET group of companies (the "Group") or are licensed to it. No licence is granted for the use of it other than for information purposes in connection with the products to which it relates. No licence of any intellectual property rights is granted. The Information is subject to change without notice and replaces all data sheets previously supplied. The Information supplied is believed to be accurate but the Group assumes no responsibility for its accuracy or completeness, any error in or omission from it or for any use made of it. Users of this data sheet should check for themselves the Information and the suitability of the products for their purpose and not make any assumptions based on information included or omitted. Liability for loss or damage resulting from any reliance on the Information or use of it (including liability resulting from negligence or where the Group was aware of the possibility of such loss or damage arising) is excluded. This will not operate to limit or restrict the Group's liability for death or personal injury resulting from its negligence. Multicomp Pro is the registered trademark of Premier Farnell Limited 2019.

Newark.com/multicomp-pro  
Farnell.com/multicomp-pro  
Element14.com/multicomp-pro