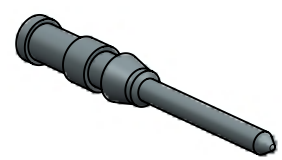


SAP.No.	Eng.No.	Material plating	ØA [mm]	Wire [mm²]	AWG	Stripping length [mm]	Molex Hand Crimp Tool
936010051	7100.4211.0	Silver plated	0.9	0.14+0.37	26+22	8	936050073 8500.7925.0  or  936050076 8500.7930.0
936010053	7100.4212.0		1.1	0.5	20		
936010055	7100.4213.0		1.3	0.75	18		
936010057	7100.4214.0		1.45	1.0	18		
936010059	7100.4215.0		1.75	1.5	16		
936010061	7100.4216.0		2.25	2.5	14		
936010052	7100.4211.1	Gold plated	0.9	0.14+0.37	26+22	8	936050065 8500.6251.0
936010054	7100.4212.1		1.1	0.5	20		
936010056	7100.4213.1		1.3	0.75	18		
936010058	7100.4214.1		1.45	1.0	18		
936010060	7100.4215.1		1.75	1.5	16		
936010062	7100.4216.1		2.25	2.5	14		

**SCALE 2:1**



<b>SYMBOLS</b> DIMENSION UNITS: mm SCALE: 5:1 GENERAL TOLERANCES (UNLESS SPECIFIED) ANGULAR TOL ± ° 4 PLACES ± 3 PLACES ± 2 PLACES ± 1 PLACE ± 0 PLACES ± DRAFT WHERE APPLICABLE MUST REMAIN WITHIN DIMENSIONS	THIS DRAWING CONTAINS INFORMATION THAT IS PROPRIETARY TO MOLEX ELECTRONIC TECHNOLOGIES, LLC AND SHOULD NOT BE USED WITHOUT WRITTEN PERMISSION CURRENT REV DESC:				
	EC NO: 601258 DRWN: AKHEMIRI 2018/07/04 CHK'D: DMERONI 2018/07/10 APPR: AMELZI 2018/09/12				
INITIAL REVISION: DRWN: AKHEMIRI 2018/07/04 APPR: AMELZI 2018/09/12			PRODUCT CUSTOMER DRAWING		
DOCUMENT NUMBER: 936010051		DOC TYPE: PSD	DOC PART: 000	REVISION: A	
DRAFT WHERE APPLICABLE MUST REMAIN WITHIN DIMENSIONS	FIRST ANGLE PROJECTION	DRAWING: A4-SIZE	SERIES: 93601	MATERIAL NUMBER: SEE TABLE	CUSTOMER: GENERAL MARKET
SHEET NUMBER: 1 OF 1					