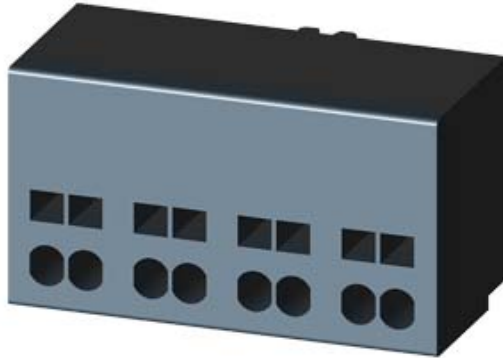


AUXILIARY SWITCH, 2 NO CONTACTS,  
CONNECTION AUXILIARY CIRCUIT: SPRING-  
LOADED TERMINAL,



#### General technical data:

<b>product brand name</b>		SIRIUS
<b>Product designation</b>		auxiliary switch compact feeder
<b>Protection class IP</b>		IP20
Relative humidity during operation	%	10 ... 90
<b>Ambient temperature</b>		
• during transport	°C	-55 ... +80
• during storage	°C	-55 ... +80
• during operation	°C	-20 ... +60
<b>Equipment marking acc. to DIN EN 61346-2</b>		K
<b>Equipment marking acc. to DIN 40719 extended according to IEC 204-2 acc. to IEC 750</b>		K

#### Auxiliary circuit:

Number of NC contacts for auxiliary contacts		0
Number of NO contacts for auxiliary contacts		2

#### Installation/ mounting/ dimensions:

<b>Width</b>	mm	45
<b>Height</b>	mm	32
<b>Depth</b>	mm	25

#### Connections/ Terminals:

<b>Wire stripping length</b>	mm	10
<b>Type of electrical connection</b>		
• for auxiliary and control current circuit		spring-loaded terminals

Type of connectable conductor cross-section for auxiliary contacts		
<ul style="list-style-type: none"> <li>• solid</li> </ul>		2x (0.25 ... 2.5 mm <sup>2</sup> )
<ul style="list-style-type: none"> <li>• finely stranded <ul style="list-style-type: none"> <li>— with core end processing</li> <li>— without core end processing</li> </ul> </li> </ul>		2x (0.25 ... 1.5 mm <sup>2</sup> ) 2x (0.25 ... 2.5 mm <sup>2</sup> )
Type of connectable conductor cross-section for AWG conductors for auxiliary contacts		2x (24 ... 14)

#### Certificates/ approvals:

Certificate of suitability	IEC / EN 60947-6-2
----------------------------	--------------------

General Product Approval	EMC	Functional Safety/Safety of Machinery	Shipping Approval
--------------------------	-----	---------------------------------------	-------------------



Shipping Approval	other
-------------------	-------



[Declaration of Conformity](#)

[Environmental Confirmations](#)

other
-------

[other](#)

#### Further information

**Information- and Downloadcenter (Catalogs, Brochures,...)**

<http://www.siemens.com/industrial-controls/catalogs>

**Industry Mall (Online ordering system)**

<http://www.siemens.com/industrymall>

**Cax online generator**

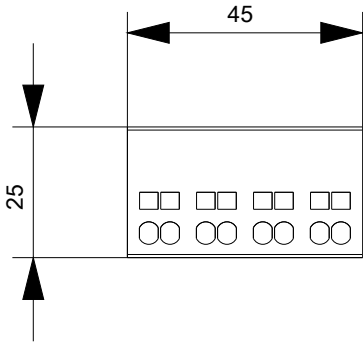
<http://support.automation.siemens.com/WW/CAXorder/default.aspx?lang=en&mlfb=3RA69112A>

**Service&Support (Manuals, Certificates, Characteristics, FAQs,...)**

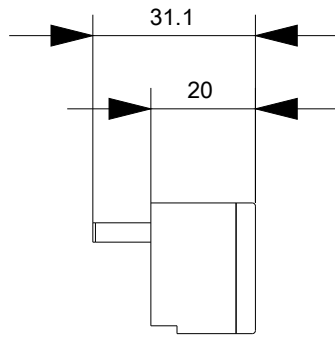
<http://support.automation.siemens.com/WW/view/en/3RA69112A/all>

**Image database (product images, 2D dimension drawings, 3D models, device circuit diagrams, EPLAN macros, ...)**

<http://www.automation.siemens.com/bilddb/index.aspx?attID9=3RA69112A&lang=en>



last modified:



09.03.2015