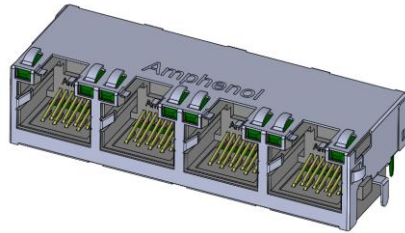
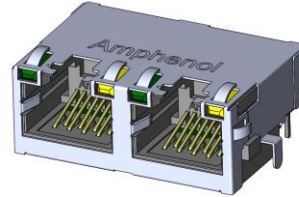


About Amphenol Commercial Products

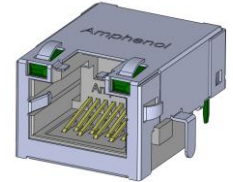
Amphenol's commercial connector products are used in a variety of end user applications including networking, telecom, server & computer, storage & HDD, consumer electronics and entertainment, professional audio & Industrial & Military/Aerospace.



P/N RJE72-188-1451 SHOWN
FOUR PORT, 8P8C, SHIELD WITH
EMI TABS, AND GREEN LEDs



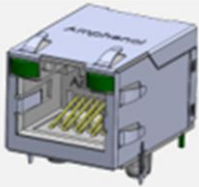
P/N RJE72-488-1441 SHOWN
TWO PORT, 8P8C,
SHIELD WITH EMI TABS, AND GREEN
AND YELLOW LEDs



P/N RJE72-188-1451 SHOWN
SINGLE PORT, 8P8C, SHIELD
WITH EMI TABS, AND GREEN
LEDs

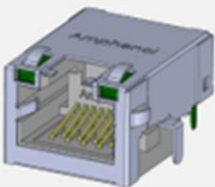
Related Products

RJE58 SERIES



P/N RJE58-188-5451 SHOWN
CAT 5e, SINGLE PORT, 8P8C,
WITH SHIELD AND GREEN
LEDs

RJE7B SERIES



P/N RJE7B-188-1451 SHOWN
CAT 6A, SINGLE PORT, 8P8C,
WITH SHIELD AND GREEN
LEDs

OVERVIEW

This product specification defines the general use and performance parameters for Amphenol's RJE72 series of modular jacks.

Availability: Single, Two, and four port connectors available with a wide variety of LED and shielding options.

USAGE

The RJE72 series of modular jacks meet CAT5e performance per EIA-568-C.2. It supports Gigabit Ethernet Protocols. Shielding available for increased EMI performance and LEDs for Link Activity and Network Speed verification.

APPLICATIONS

Intended for use in applications such as:

Data

- Storage
- Servers
- Routers
- Switches
- Hubs

Consumer Goods

- Security Systems
- Set Top Boxes
- Video Game Systems
- PCs, Laptops
- Copiers, Printers

Industrial and Instrumentation

- Uninterruptible Power Supply (UPS)
- ATMs
- Vending Machines
- POS Terminals
- Industrial IoT Platforms

Networking & Telecom

- 5G Wireless
- Modems
- Fax Machines

Medical

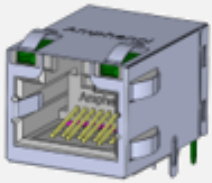
- Analysis Equipment
- Mass Spectrometers

About Amphenol Commercial Products

Amphenol's commercial connector products are used in a variety of end user applications including networking, telecom, server & computer, storage & HDD, consumer electronics and entertainment, professional audio & Industrial & Military/Aerospace.

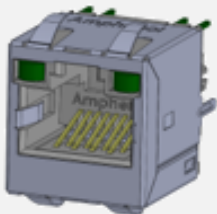
Related Products

RJE1A SERIES



P/N RJE1A-188-5XX1 SHOWN CAT 5e, SINGLE PORT, 8P8C WITH SHIELD AND GREEN LEDs

RJE4A SERIES



P/N RJE4A-188-1XX1 SHOWN CAT6, SINGLE PORT, 8P8C, WITH SHIELD AND GREEN LEDs

ELECTRICAL CHARACTERISTICS

Contact Resistance	20 mΩ maximum
Insulation Resistance	500 MΩ minimum at 500V DC for 2 minutes maximum
Current Rating	1.25 Amps per contact
Voltage Rating	125 Volts AC
DWV (Dielectric Withstanding Voltage)	Contact to Contact: 1,000 VAC, 60 Hz, 1 min
	Contact to LED: 1,500 VAC, 60 Hz, 1 min
	Contact to Shield: 1,500 VAC, 60 Hz, 1 min
	LED to Shield: 1,000 VAC, 60 Hz, 1 min
LED Forward DC Current	20 mA typical
LED Forward Voltage	2.4 Volts max. @ 20mA (for single colors)
	2.4 Volts max. @ 20mA (for Bi-colors)
LED Reverse Voltage	5 Volts maximum
LED Light Intensity	4 to 30 mcd @ 20mA (for single colors)
	8 to 20 mcd @ 20mA (for Bi-colors)
LED Wavelength	Yellow: 587 ± 7nm measured @ 20mA
	Green: 565 ± 6nm measured @ 20mA
	Red: 625 ± 5nm measured @ 20mA

Supports PoE Type1, Type2, Type 3, and Type 4 per IEEE PoE standards
 IP20 rated per IEC 60529
 TIA 1096 Compliant

CATEGORY 5e CHARACTERISTICS

Frequency MHz	Near-end Crosstalk dB Min.	Return Loss dB Min.	Attenuation dB Max.
1.0	65	30	0.1
4.0	65	30	0.1
8.0	64.9	30	0.1
10.0	63	30	0.1
16.0	58.9	30	0.2
20.0	57	30	0.2
25.0	55	30	0.2
31.25	53.1	30	0.2
62.5	47.1	24.1	0.3
100.0	43	20	0.4

About Amphenol Commercial Products

Amphenol's commercial connector products are used in a variety of end user applications including networking, telecom, server & computer, storage & HDD, consumer electronics and entertainment, professional audio & Industrial & Military/Aerospace.

Related Products

RJE45 SERIES



P/N RJE45-188-1451 SHOWN
CAT 6, SINGLE PORT, 8P8C,
WITH SHIELD AND GREEN
LEDs

RJE60 SERIES



P/N RJE60-188-5451 SHOWN
CAT 6A, SINGLE PORT,
8P8C, WITH SHIELD AND
GREEN LEDs

MECHANICAL CHARACTERISTICS

Mating Connector Insertion Force	5.0 lbs maximum
Mating Connector Pull Retention Force	20.0 lbs minimum
Durability	750 mating and unmating cycles for 50µ" gold plating
Recommended Soldering Temperature	Wave soldering peaked at 260°C for 10 seconds maximum
Operating Temperature	-55°C to +85°C

UL File #: E135615
Contact Sales for reflow-compatible versions.

MATERIAL REQUIREMENTS

RJE72 connectors are RoHS compliant.
Unless otherwise specified, materials for each component shall be:

Insulator	High temperature thermoplastic, complies with UL 94V-0
Contacts	-Phosphor Bronze hard temper with gold thickness options (6µ", 15µ", 30µ", 50µ") over 50µ" minimum Nickel on contact mating area -100µ" minimum matte Tin plating on solder tails
Shield	Stainless Steel with Tin finish tails
LED	Tin plating on LED tails

AVAILABLE DOCUMENTS

Below is a list of some of our common standard sales drawings.
Contact our website, sales, or an authorized Amphenol representation for additional drawings.

RJE72-188-1X0X	Single port, shielded with top and side EMI tabs, without LEDs
RJE72-188-1XXX	Single port, shielded with top and side EMI tabs, with LEDs
RJE72-188-6X0X	Single port, shielded with no EMI tabs, without LEDs
RJE72-188-6XXX	Single port, shielded with no EMI tabs, with LEDs
RJE72-288-1X0X	Two port, shielded with top and side EMI tabs, without LEDs
RJE72-288-1XXX	Two port, shielded with top and side EMI tabs, with LEDs
RJE72-288-6X0X	Two port, shielded with no EMI tabs, without LEDs
RJE72-288-6XXX	Two port, shielded with no EMI tabs, with LEDs
RJE72-488-1X0X	Four port, shielded with top and side EMI tabs, without LEDs
RJE72-488-1XXX	Four port, shielded with top and side EMI tabs, with LEDs