



DESIGN KIT

WR-SMA / WR-RPSMA Connectors

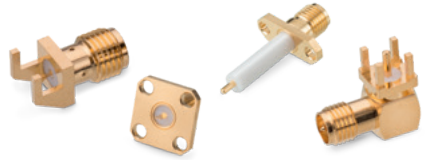


Order Code 603 301
Version 2.0

DESIGN KIT

WR-SMA / WR-RPSMA

Connectors



603 110 x21 1x5 xx

Right Angle THT Jack

Center contact:
Ø 1.27 mm

603 120 x21 1x5 xx

Straight THT Jack

Center contact:
Ø 1.27 mm

603 121 021 14x xx

Straight SMT & THR Jack

Center contact:
Ø 1.27 mm

603 122 x21 1xx xx

End Launch Edge Card &
Round Post Jack

Center contact:
Ø 0.76 mm

603 122 021 145 xx

End Launch Flat Tab Jack

Center contact:
Ø 0.51 WIDTH x 0.25 THK

603 12x 121 14x xx

2-Hole Flange Jack:
Solder Cup / Flat Tab / Round Post /
Exposed PTFE

Center contact:
Ø 0.25 mm, Ø 1.27 mm &
1.27 WIDTH x 0.127 THK

603 12x 221 14x xx

4-Hole Flange Jack:
Solder Cup / Flat Tab / Round Post /
Exposed PTFE

Center contact:
Ø 1.27 mm &
1.27 WIDTH x 0.127 THK

603 1xx 021 245 xx

THT & End Launch Plug

Center contact:
Ø 0.76 mm & Ø 1.27 mm

630 1xx x21 2x5 xx

Reverse Polarity SMA

Center contact:
Ø 0.76 mm & Ø 1.27 mm

Important information: Würth Elektronik's design kits contain reference components. These components correspond with the current product development status on the day of supply. Exchange of the reference components to components with up-to-date product development status is not carried out automatically. No liability is taken for the use of these reference components. Therefore, please request new samples prior to releases for series production and product release.

Please check datasheets on www.we-online.com for specifications. Würth Elektronik eiSos GmbH & Co. KG, EMC & Inductive Solutions. © 2020