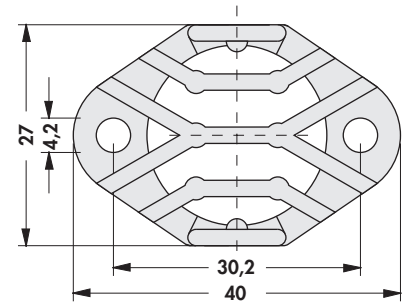
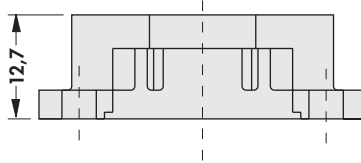


**Aufsetzkühlkörper
und Winkel für TO 3**

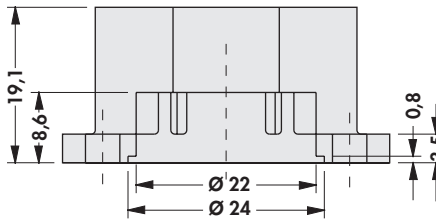
**Set up heatsinks
and angle for TO 3**

**Capots dissipateurs et
angle pour TO 3**

AKK 127
14 K/W



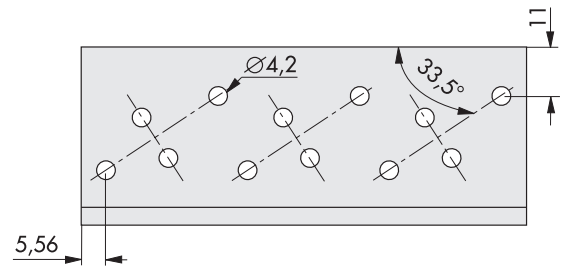
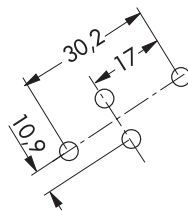
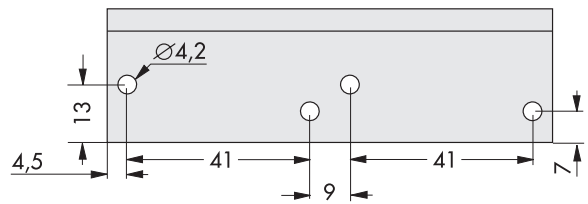
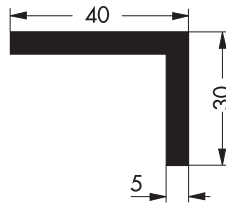
AKK 191
12 K/W



Material: Aluminium-Druckguß
Oberfläche schwarz lackiert

Material: Die casting aluminium
Surface black lacquered

Matière: Aluminium moulé sous pression
Surface laquée noire



WP 4030 100 3
3,7 K/W

Art.Nr. Art. No. Art. n°		 [mm]	Wärmewiderstand Thermal resistance Résistance thermique
WP 4030 100 3 ...	TO 3	100	3,7 K/W
WP 4030 100 3 ...			
WP 4030 100 ...			
WP 4030 100 ...			
<p>... bitte angeben: SA = schwarz eloxiert AL = Aluminium natur entfettet</p>			<p>... please indicate: SA = black anodised AL = raw degreased aluminium</p>
<p>... veuillez indiquer: SA = anodisé noir AL = Aluminium brut dégraissé</p>			

Profil → A 126

profile → A 126

profilé → A 126