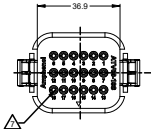
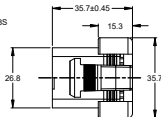
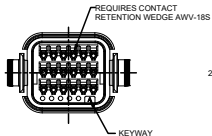
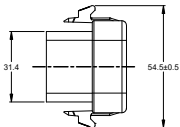


REVISIONS					
REV	ECO	DESCRIPTION	DATE	BY	APPR
A1	-	RELEASE DRAWING	26JUN18	RIMON	TOMMY
A2	-	UPDATE NOTES	19FEB19	SULLEN	TOMMY
A3	-	UPDATE REAR SEAL WIRE RANGE	05DEC19	SULLEN	TOMMY
A4	-	REVISED IP RATING	11JUN24	JHEAD	BRETT



NOTES: UNLESS OTHERWISE SPECIFIED

1. SEE SHEET 2 FOR KEY ARRANGEMENTS AND COLORS.

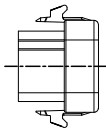
2. MATERIAL:
HOUSING: THERMOPLASTIC
SEAL: SILICONE RUBBER, COLOR: RED

3. MODIFICATIONS: STANDARD DIAMETER WIRE SEAL

4. SPECIFICATIONS:
4.1 CURRENT RATING: 13 AMPS
4.2 OPERATING TEMPERATURE: -55°C TO +125°C.
4.3 DIELECTRIC WITHSTANDING VOLTAGE: LESS THAN 2 MILLIAMPS CURRENT LEAKAGE @ 1500 VOLTS AC.
4.4 INSULATION RESISTANCE: 1000 MEGOHMS MIN @ 25°C.
4.5 MOISTURE RESISTANCE: IP68 (MATED CONDITION)
4.6 MATING CYCLE DURABILITY: 100 CYCLES
4.7 RoHS COMPLIANT

5. MATING PART: ATV02-18PX* RECEPTACLE & ATV04-18PX* RECEPTACLE
(X = A,B,C,D KEYS ; * = MODIFICATIONS AND COLORS)

6. ALL DIMENSIONS ARE FOR REFERENCE USE ONLY.

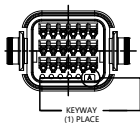


△ CONTACT SIZE AND REAR SEAL WIRE RANGE:

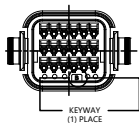
CONTACT SIZE	MIN. INSUL O.D.	MAX. INSUL O.D.	TYPICAL WIRE RANGE
16	2.23 mm (.088 in)	3.00 mm (.118 in)	14-20 AWG (2.0-0.5mm ²)

SEE SHEET 2		PART NUMBER		DESCRIPTION		ITEM
QUANTITY		MATERIALS LIST				
UNLESS OTHERWISE SPECIFIED: 1) All dimensions are in millimeters. 2) Tolerances are as follows: 3 P.L. DEC ±0.50 19 Precision ±0.18 Angles ±1° 3 P.L. DEC ±0.18 19 Precision ±0.18 Angles ±1° 3) Note reference to △		SIGNATURES:		DATE:		<p>Site Systems - www.amphenol-site.com 44724 Morley Drive Clinton Township, MI 48036</p> <p>PLUG, 18 PIN, ATV SERIES STANDARD DIAMETER WIRE SEAL</p>
MATERIAL SPECIFICATIONS:		DESIGNED: SULLENZANG		08DEC19		
PROCESS SPECIFICATIONS:		CHECKED: ORULLU		08DEC19		
REVISIONS:		APPROVAL: TOMMY KE		05DEC19		
THE DRAWING IS SUPPLEMENT FOR INFORMATION ONLY. DESIGN FEATURES, SPECIFICATIONS AND PERFORMANCE DATA DESCRIBED HEREIN ARE THE PROPERTY OF THE APPLICABLE CORPORATION. INDEBITS OF REPRODUCTION ARE APPLIED. ALL DIMENSIONS ARE SUBJECT TO NORMAL MANUFACTURING VARIATIONS.		SCALE: NONE		REV: B C-		<p>DATE: 11/24/24</p> <p>BY: JHEAD</p> <p>APP: BRETT</p> <p>REV: A4</p>
PART NUMBER		DESCRIPTION		ITEM		
ATV06-18SX		PLUG, 18 PIN, ATV SERIES		1		OF 2

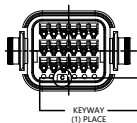
REVISONS					
REV	ECO	DESCRIPTION	DATE	BY	APPR
A1	-	RELEASE DRAWING	26JUN18	RIMON	TOMMY
A2	-	UPDATE NOTES	19FEB19	SULLEN	TOMMY
A3	-	UPDATE REAR SEAL WIRE RANGE	05DEC19	SULLEN	TOMMY
A4	-	REVISED IP RATING	11JUN24	JHEAD	BRETT



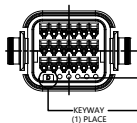
KEY-A CONFIGURATION	
COLOR	PART NUMBER
GREY	ATV06-18SA
REF: 07V06-18SA	




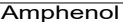
KEY-B CONFIGURATION	
COLOR	PART NUMBER
BLACK	ATV06-18SB
REF: 07V06-18SB	



KEY-C CONFIGURATION	
COLOR	PART NUMBER
GREEN	ATV06-18SC
REF: 07V06-18SC	



KEY-D CONFIGURATION	
COLOR	PART NUMBER
BROWN	ATV06-18SD
REF: 07V06-18SD	

SEE CONFIGURATION CHART		PART NUMBER		DESCRIPTION		ITEM
QUANTITY	MATERIALS LIST					
UNLESS OTHERWISE SPECIFIED: 1) All dimensions are in inches (mm). 2) Tolerances are as follows: 1 PL DEC +0.02 2 PL DEC +0.02 3) Hole reference = 	SIGNATURE(S)	DATE	 Sine Systems - www.amphenol-sine.com 44724 Morley Drive Clinton Township, MI 48036 PLUG, 18 PIN, ATV SERIES STANDARD DIAMETER WIRE SEAL			
DESIGN	SULLIVAN	05DEC19				
PROCESS	ORON	05DEC19				
DESIGN	TOMMY AE	05DEC19				
SERIAL SPECIFICATIONS	THIS DRAWING IS SUPPLIED FOR INFORMATION ONLY. DESIGN FEATURES, CONFIGURATIONS AND PERFORMANCE DATA SHOWN HEREON ARE THE PROPERTY OF THE AMPHENOL CORPORATION. REPLICATES OF REPRODUCTION ARE INVALID. ALL DIMENSIONS ARE SUBJECT TO NORMAL MANUFACTURING VARIATIONS.		REV	REV	REV	REV
PROCESS SPECIFICATIONS			B	C-	ATV06-18SX	A4
TEST ASST			NONE		SHEET 2	2

PLUG, 18 PIN, ATV SERIES, STANDARD DIAMETER WIRE SEAL

000000

ATV06-18SX

REV A4

SHT 2

OF 2