

# Split ferrite

$\varnothing \leq 6.5 \text{ mm}$

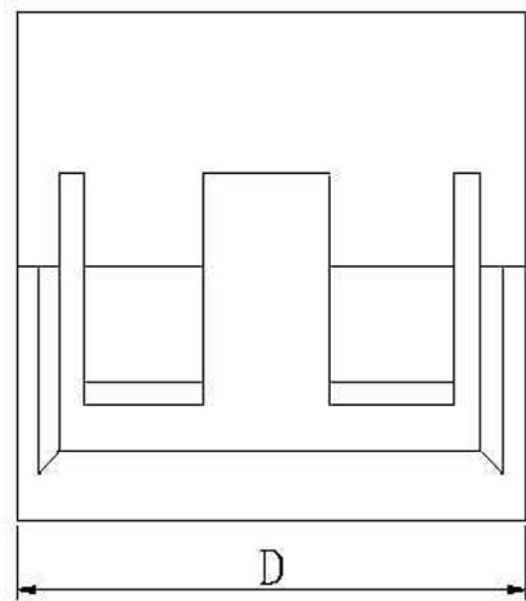
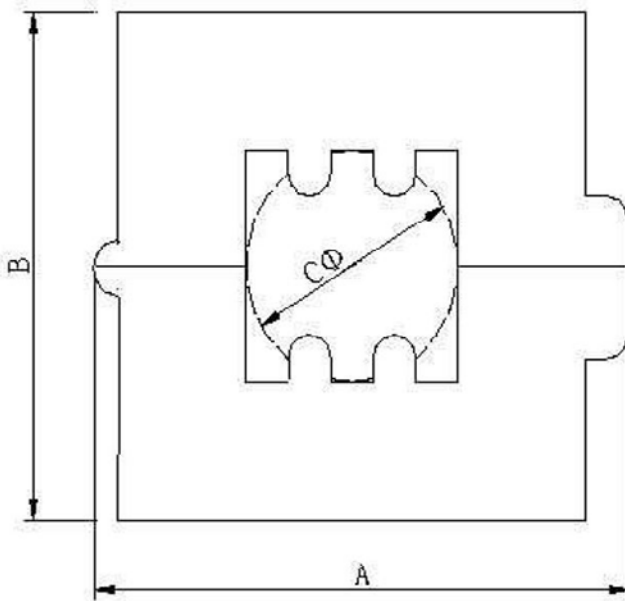


## FEATURES:

Square Shape

## SPECIFICATION:

For cable size	$\varnothing \leq 6.5 \text{ mm}$
Colour	black
A	20.5 mm
B	20 mm
C	6.5 mm
D	33 mm
Impedance @ 25 MHz	145 $\Omega$
Impedance @ 100 MHz	246 $\Omega$

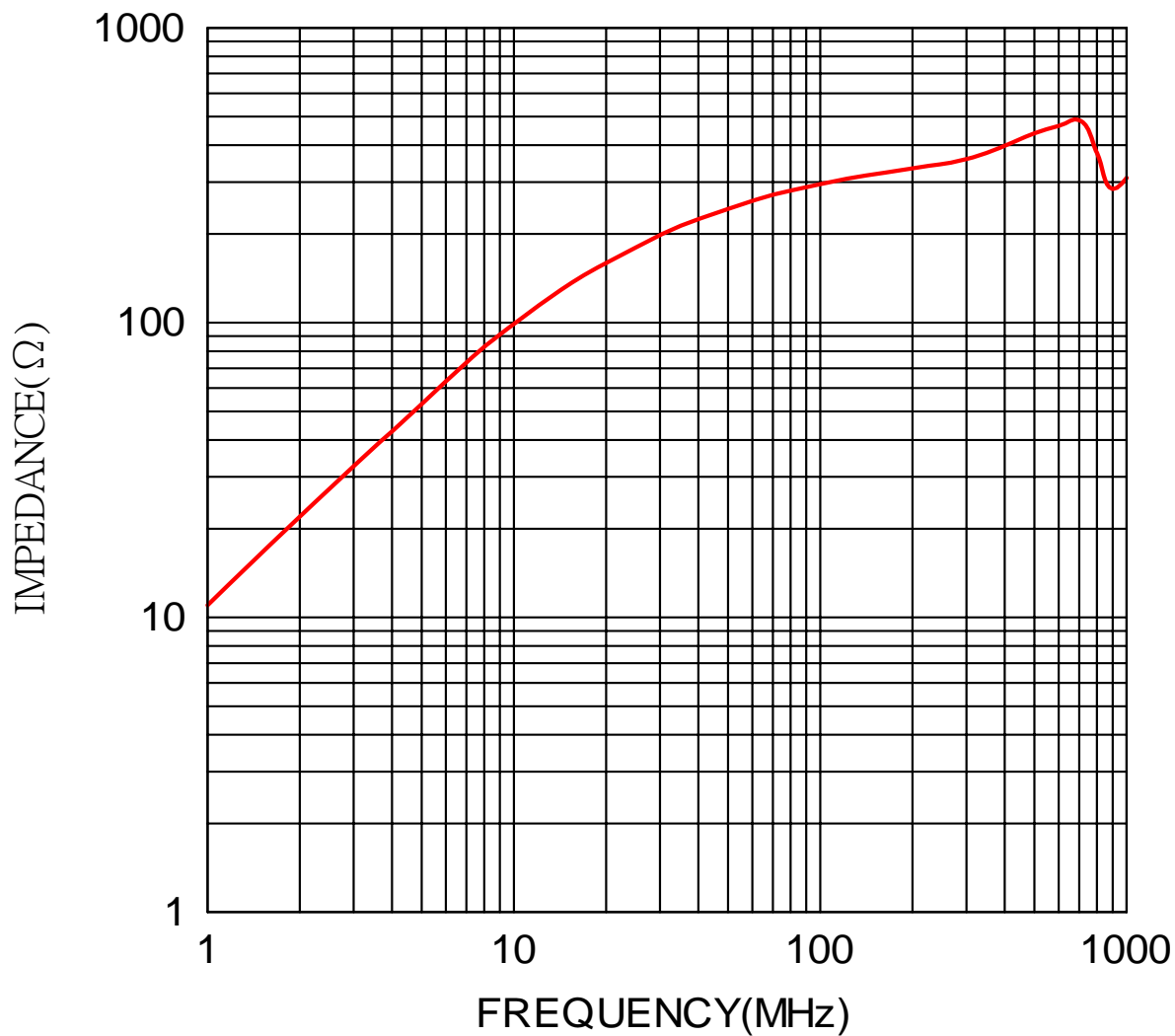


# Split ferrite

$\varnothing \leq 6.5 \text{ mm}$

## Frequency Graph

1. TEST INSTRUMENT: HP4286A
2. WINDING: 0.4  $\Phi$  X90 mm 2 U. E. W 1TS



	1	5	10	25	50	100	200	300	400	500	600	700	800	900	1000
Z —	11	53	99	180	243	295	334	359	398	439	465	486	377	284	310

(DATA BETWEEN 500MHz AND 1000MHz ARE FOR REFERENCE ONLY)

Art. Nr.  
RND 165-00012