

## Data sheet for SIMOTICS S-1FK2

Article No. : 1FK2210-4AC01-1SA0

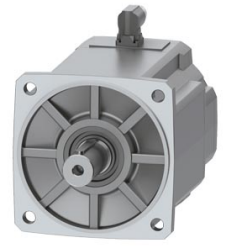


Figure similar

Client order no. :  
Order no. :  
Offer no. :  
Remarks :

Item no. :  
Consignment no. :  
Project :

### Basic motor data

|                         |   |
|-------------------------|---|
| Motor type              | Permanent-magnet synchronous motor, Natural cooling, IP65 |
| Motor type              | Compact   |
| Static torque           | 40.00 Nm  |
| Static current          | 15.0 A  |
| Maximum torque          | 120.00 Nm   |
| Maximum current         | 55.0 A  |
| Maximum speed           | 3,300 rpm   |
| Rotor moment of inertia | 117.0000 kgcm <sup>2</sup>                                |
| Weight                  | 27.0 kg   |

### Rated data

SINAMICS S210, 3AC 400V

|               |           |
|---------------|-----------|
| Rated speed   | 2,000 rpm |
| Rated torque  | 30.50 Nm  |
| Rated current | 11.8 A    |
| Rated power   | 6.40 kW   |

### Encoder system

|                |  |
|----------------|--|
| Encoder system | Encoder AS22DQC: Absolute encoder single turn 22 bit |
|----------------|--|

### Motor connection

|                 |              |
|-----------------|--------------|
| Connection type | OCC for S210 |
| Connector size  | M23          |

### Mechanical data

|                               |  |
|-------------------------------|--|
| Design acc. to Code I         | IM B5 (IM V1, IM V3)                       |
| Vibration severity grade      | Grade A                                    |
| Shaft height                  | 100  |
| Flange size (AB)              | 192 mm                                     |
| Centering ring (N)            | 180 mm                                     |
| Hole circle (M)               | 215 mm                                     |
| Screw-on hole (S)             | 14.0 mm                                    |
| Overall length (LB)           | 223 mm                                     |
| Diameter of shaft (D)         | 38 mm                                      |
| Length of shaft (E)           | 80 mm                                      |
| Length of flange diagonal (P) | 244 mm                                     |
| Shaft end                     | Fitted key                                 |
| Color of the housing          | Standard (Anthracite, similar to RAL 7016) |

