

# GN 133 | Two-way connecting clamps

Aluminium



- 1
- 2
- 3
- 4
- 5
- 6
- 7
- 8
- 9
- 10
- 11
- 12
- 13
- 14
- 15
- 16
- 17
- 18

## MATERIAL

Aluminium, matte finish.  
AISI 304 stainless steel screws and nuts.

## STANDARD EXECUTIONS

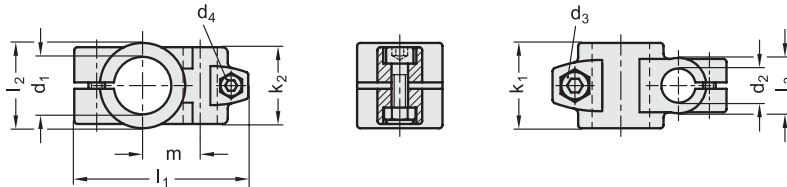
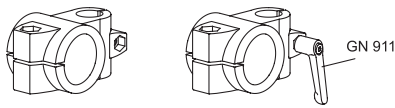
- **GN 133-BL**: natural aluminium.
- **GN 133-SW**: aluminium, epoxy resin coating, RAL 9005 black colour.

## FEATURES AND APPLICATIONS

The assembly holes of GN 133 connecting clamps allow an excellent match with tubes GN 990 (see page 1778).  
The clamping screws  $d_3$  may be replaced by clamping kits GN 911 (see page 1782).

## SPECIAL EXECUTIONS ON REQUEST

Different combinations of holes  $d_1/d_2$ .



Code BL	Code SW	Description	d1	d2	d3	d4	k1	k2	l1	l2	l3	m	d3 Clamping kit	d4 Clamping kit	$\Delta$
GN.43111	GN.43116	GN 133-B20-B12-2-*	20	12	M8	M6	40	36	81.5	40	26	27	GN 911-M8-32	GN 911-M8-25	180
GN.43131	GN.43136	GN 133-B20-B14-2-*	20	14	M8	M6	40	36	81.5	40	26	27	GN 911-M8-32	GN 911-M8-25	174
GN.43151	GN.43156	GN 133-B20-B16-2-*	20	16	M8	M6	40	36	81.5	40	26	27	GN 911-M8-32	GN 911-M8-25	170
GN.43171	GN.43176	GN 133-B20-B18-2-*	20	18	M8	M6	40	36	81.5	40	26	27	GN 911-M8-32	GN 911-M8-25	170
GN.43191	GN.43196	GN 133-B25-B12-2-*	25	12	M8	M6	40	36	81.5	40	26	27	GN 911-M8-32	GN 911-M8-25	159
GN.43211	GN.43216	GN 133-B25-B14-2-*	25	14	M8	M6	40	36	81.5	40	26	27	GN 911-M8-32	GN 911-M8-25	155
GN.43231	GN.43236	GN 133-B25-B16-2-*	25	16	M8	M6	40	36	81.5	40	26	27	GN 911-M8-32	GN 911-M8-25	150
GN.43251	GN.43256	GN 133-B25-B18-2-*	25	18	M8	M6	40	36	81.5	40	26	27	GN 911-M8-32	GN 911-M8-25	147
GN.43271	GN.43276	GN 133-B30-B12-2-*	30	12	M8	M6	40	36	81.5	40	26	27	GN 911-M8-32	GN 911-M8-25	135
GN.43291	GN.43296	GN 133-B30-B14-2-*	30	14	M8	M6	40	36	81.5	40	26	27	GN 911-M8-32	GN 911-M8-25	128
GN.43311	GN.43316	GN 133-B30-B16-2-*	30	16	M8	M6	40	36	81.5	40	26	27	GN 911-M8-32	GN 911-M8-25	128
GN.43331	GN.43336	GN 133-B30-B18-2-*	30	18	M8	M6	40	36	81.5	40	26	27	GN 911-M8-32	GN 911-M8-25	124
GN.43351	GN.43356	GN 133-B40-B20-2-*	40	20	M10	M8	65	59	122	65	40	45	GN 911-M10-55	GN 911-M8-32	640
GN.43371	GN.43376	GN 133-B40-B25-2-*	40	25	M10	M8	65	59	122	65	40	45	GN 911-M10-55	GN 911-M8-32	601
GN.43391	GN.43396	GN 133-B40-B30-2-*	40	30	M10	M8	65	59	122	65	40	45	GN 911-M10-55	GN 911-M8-32	570
GN.43411	GN.43416	GN 133-B42-B20-2-*	42	20	M10	M8	65	59	122	65	40	45	GN 911-M10-55	GN 911-M8-32	600
GN.43431	GN.43436	GN 133-B42-B25-2-*	42	25	M10	M8	65	59	122	65	40	45	GN 911-M10-55	GN 911-M8-32	600
GN.43451	GN.43456	GN 133-B42-B30-2-*	42	30	M10	M8	65	59	122	65	40	45	GN 911-M10-55	GN 911-M8-32	600
GN.43471	GN.43476	GN 133-B45-B20-2-*	45	20	M10	M8	65	59	122	65	40	45	GN 911-M10-55	GN 911-M8-32	510
GN.43491	GN.43496	GN 133-B45-B25-2-*	45	25	M10	M8	65	59	122	65	40	45	GN 911-M10-55	GN 911-M8-32	510
GN.43511	GN.43516	GN 133-B45-B30-2-*	45	30	M10	M8	65	59	122	65	40	45	GN 911-M10-55	GN 911-M8-32	510
GN.43531	GN.43536	GN 133-B48-B20-2-*	48	20	M10	M8	65	59	122	65	40	45	GN 911-M10-55	GN 911-M8-32	475
GN.43551	GN.43556	GN 133-B48-B25-2-*	48	25	M10	M8	65	59	122	65	40	45	GN 911-M10-55	GN 911-M8-32	475
GN.43571	GN.43576	GN 133-B48-B30-2-*	48	30	M10	M8	65	59	122	65	40	45	GN 911-M10-55	GN 911-M8-32	475
GN.43591	GN.43596	GN 133-B50-B20-2-*	50	20	M10	M8	65	59	122	65	40	45	GN 911-M10-55	GN 911-M8-32	505
GN.43611	GN.43616	GN 133-B50-B25-2-*	50	25	M10	M8	65	59	122	65	40	45	GN 911-M10-55	GN 911-M8-32	480
GN.43631	GN.43636	GN 133-B50-B30-2-*	50	30	M10	M8	65	59	122	65	40	45	GN 911-M10-55	GN 911-M8-32	450

\* Complete the description of the standard item needed by adding the finish of the connector clamps: BL (blank) or SW (black).