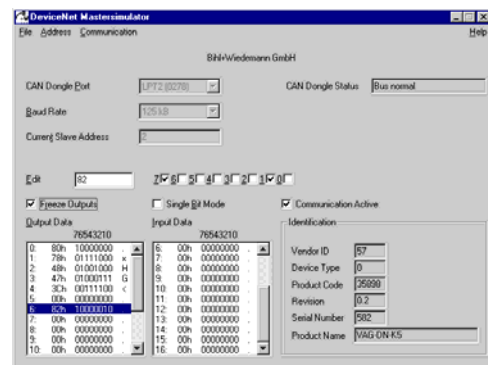


Monitoring Software for DeviceNet Slaves

DeviceNet Dongle with USB Interface



Article no. BW1420 with USB Interface

The DeviceNet Master Simulator is an easy to use software for data exchange with DeviceNet slaves of many suppliers. The DeviceNet Master Simulator can exchange data with the slaves even without EDS-file. Input data can be read, output data can be written and the DeviceNet diagnosis can be displayed. Furthermore it is possible to read and write any object independent of the state of communication.

The DeviceNet Master Simulator offers the possibility to scan a DeviceNet network and find all connected slaves. The I/O data is displayed binary and hexadecimal.

In single bit mode it is possible to set an output as long as the mouse button is pressed.

The device identification is read out of the DeviceNet slave and displayed together with the I/O data.

The DeviceNet Master Simulator consists of the software and a DeviceNet dongle. The DeviceNet dongle is the ideal interface converter between an USB port (the parallel interface of a PC) and DeviceNet. The converter needs no extra power supply. Therefore it is also suitable for mobile use with a laptop or a notebook.

Article no.	BW1420
Interfaces	USB interface CAN interface with 9 pin D-sub-plug (male)
Power supply	powered by the USB port of the PC
Length of connector cables	max. 2 m
Transfer rates	125, 250 or 500 KBaud
Ambient temperature	0°C ... +55°C
Storage temperature	-25°C ... +70°C

Requirements:

- IBM compatible PC 80486 or higher
- Plug and Play Bios

Operating system:

Windows 98, Windows NT, Windows 2000, Windows Me, Windows XP, Windows 7

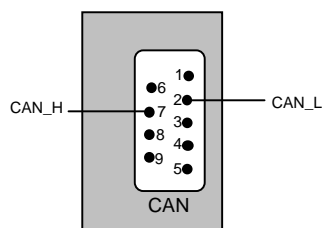
Specification:

- Software DeviceNet Master Simulator
- DeviceNet-Dongle

Note:

- At the end of the DeviceNet line a bus termination (120 Ohm) has to be used.
- 32-bit DLL drivers and program examples are available for download on the homepage and are not included in deliver

Connection D-sub-plug:



Accessories:

- D-sub-data transmission cord for AS-i Gateways with CAN interface (Art.-Nr. BW1226)