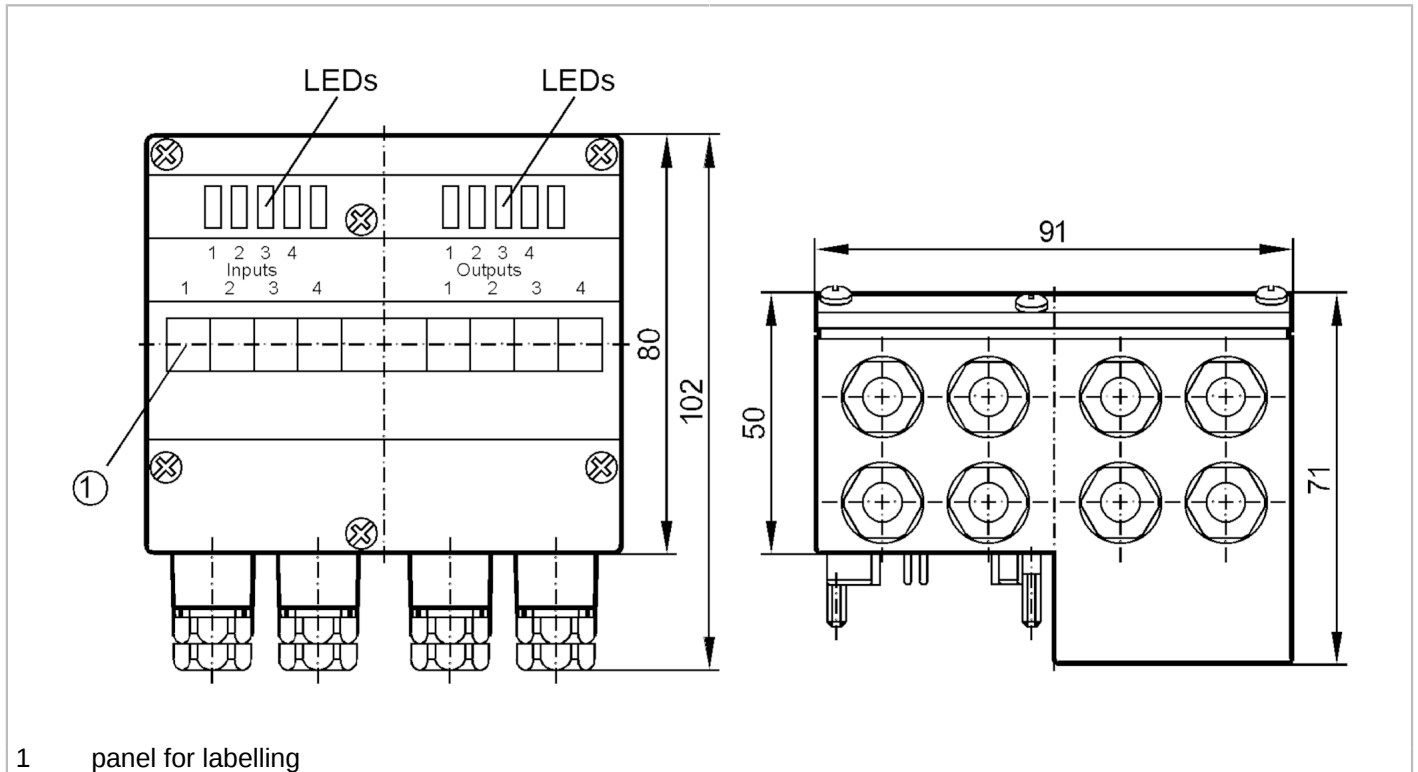


AC2035



AS-Interface universal module

EEMS/Module/4DI/4DO/T/CCT



Electrical data	
Operating voltage [V]	26.5...31.6 DC
Max. current consumption from AS-i [mA]	230
Max. current load total [A]	4
Integrated watchdog	yes
Inputs / outputs	
Number of inputs and outputs	Number of digital inputs: 4; Number of digital outputs: 4
Inputs	
Number of digital inputs	4
Input circuit of digital inputs	PNP
Sensor supply of the inputs	AS-i
Voltage supply [V]	20...30
Max. total current rating of inputs [mA]	200
Input current High [mA]	> 5
Input current Low [mA]	< 3
Min. switching level high signal [V]	10
Digital inputs protected against short circuits	yes



AS-Interface universal module

EEMS/Module/4DI/4DO/T/CCT

Outputs						
Number of digital outputs	4					
Circuit	PNP					
Voltage range DC [V]	24; (to PELV)					
Max. current load per output [mA]	1000; (DC-12 / DC-13)					
Short-circuit proof	yes					
Electrically separated	yes					
Operating conditions						
Ambient temperature [°C]	-25...60					
Protection	IP 65					
Tests / approvals						
EMC	EN 50295					
AS-i classification						
AS-i profile	S-7.F.F					
AS-i I/O configuration [hex]	7					
AS-i ID code [hex]	F.F					
AS-i certificate pending	yes					
Assignment of the data bits	data bit	D0	D1	D2	D3	
	bidirectional	I-1 / O-1	I-2 / O-2	I-3 / O-3	I-4 / O-4	
Assignment of the parameter bits	parameter bit	function				
	P0	watchdog for all outputs	:	activated	* /	deactivated
	P1	not used				
	P2	not used				
	P3	not used				
Mechanical data						
Weight [g]	317					
Type of mounting	AS-i interface to FC-E or SC lower parts					
Materials	PA 6-GF30; stainless steel (1.4305 / 303)					
Displays / operating elements						
Display	operation	LED, green				
	function	LED, yellow				
Remarks						
Remarks	Inputs and outputs must be electrically isolated.					
Pack quantity	1 pcs.					
Electrical connection						
cage clamps:						
contact pins to module lower part, FK-E / PG:						