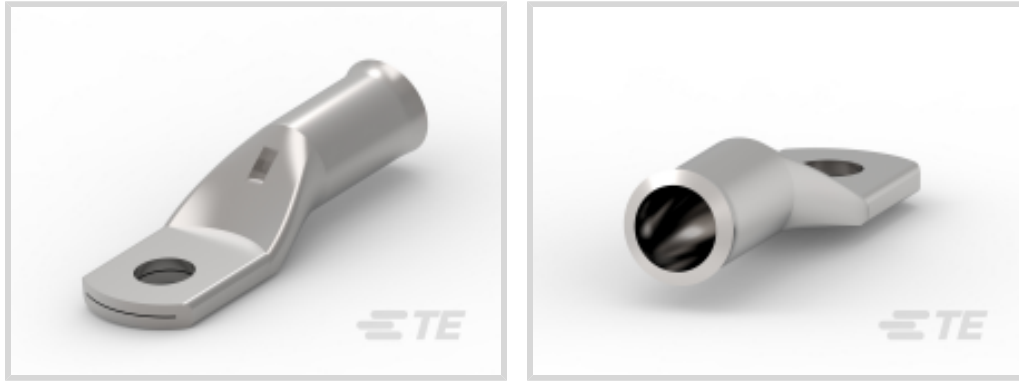




Energy & Power > Power Systems Connectors > Compression Connectors



Compression Connector Product Availability: **EMEA**

Compression Connector Technology: **Crimp**

Compression Connector Voltage Class: **≤ 1 kV**

Compression Connector Conductor Material: **Copper**

Conductor Cross-Section: **16 mm²**

Features

Product Type Features

| | |
|----------------------------------|--------------|
| Type | Terminal Lug |
| Compression Connector Technology | Crimp |
| Compression Connector Material | Copper |

Configuration Features

| | |
|-----------------|---|
| Number of Holes | 1 |
|-----------------|---|

Electrical Characteristics

| | |
|-------------------------------------|--------|
| Compression Connector Voltage Class | ≤ 1 kV |
|-------------------------------------|--------|

Body Features

| | |
|--|----------|
| Barrel Type | Standard |
| Compact Format | No |
| Compression Connector Conductor Material | Copper |
| Copper Palm | Yes |

Contact Features

| | |
|------------|------------------------------|
| Crimp Type | Hexagonal or Indent Crimping |
|------------|------------------------------|

Dimensions

| | |
|-------------------------|--------------------|
| Conductor Cross-Section | 16 mm ² |
| Palm Hole Diameter | 6 |



Operation/Application

| | |
|-------------|-----|
| Indoor Use | Yes |
| Outdoor Use | Yes |

Industry Standards

| | |
|-----------|--|
| Standards | Designed to Meet NFC 20-130 Requirements |
|-----------|--|

Product Availability

| | |
|--|------|
| Compression Connector Product Availability | EMEA |
|--|------|

Product Compliance

[For compliance documentation, visit the product page on TE.com>](#)

| | |
|---|---|
| EU RoHS Directive 2011/65/EU | Compliant |
| EU ELV Directive 2000/53/EC | Compliant |
| China RoHS 2 Directive MIIT Order No 32, 2016 | No Restricted Materials Above Threshold |
| EU REACH Regulation (EC) No. 1907/2006 | Current ECHA Candidate List: JAN 2024 (240) Candidate List Declared Against: JAN 2024 (240) Does not contain REACH SVHC |
| Halogen Content | Low Halogen - Br, Cl, F, I < 900 ppm per homogenous material. Also BFR/CFR/PVC Free |
| Solder Process Capability | Not applicable for solder process capability |

Product Compliance Disclaimer

This information is provided based on reasonable inquiry of our suppliers and represents our current actual knowledge based on the information they provided. This information is subject to change. The part numbers that TE has identified as EU RoHS compliant have a maximum concentration of 0.1% by weight in homogenous materials for lead, hexavalent chromium, mercury, PBB, PBDE, DBP, BBP, DEHP, DIBP, and 0.01% for cadmium, or qualify for an exemption to these limits as defined in the Annexes of Directive 2011/65/EU (RoHS2). Finished electrical and electronic equipment products will be CE marked as required by Directive 2011/65/EU. Components may not be CE marked. Additionally, the part numbers that TE has identified as EU ELV compliant have a maximum concentration of 0.1% by weight in homogenous materials for lead, hexavalent chromium, and mercury, and 0.01% for cadmium, or qualify for an exemption to these limits as defined in the Annexes of Directive 2000/53/EC (ELV). Regarding the REACH Regulation, the information TE provides on SVHC in articles for this part number is based on the latest European Chemicals Agency (ECHA) 'Guidance on requirements for substances in articles' posted at this URL: <https://echa.europa.eu/guidance-documents/guidance-on-reach>

Compatible Parts




TE Part # 2107475-2
UNIPRESS 6/120 +COF+CHARG



TE Part # 2107725-1
AUTOPRESS L62+ COF+CHARG



TE Part # 2107730-1
AutoPress 80 18V+COF+CHARG




TE Part # 2107733-4
AUTOPRESS C120 18V+COF+CHARG 110V



TE Part # 2107731-1
AutoPress U120 18V+COF+CHARG

Also in the Series | SIMEL XCT



Compression Connectors(73)

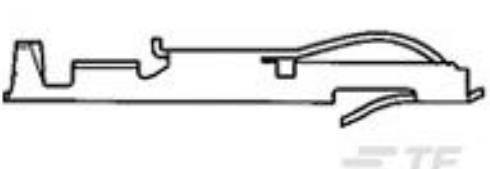
Customers Also Bought



TE Part #1-1625999-1
HSC100 1K2 5%



TE Part #2-1630024-1
HSC250 R47 5%



TE Part #5-583649-3
CONT.CRP.SNAP TW.LF.STRIP



TE Part #1676231-2
RN 0805 1K3 0.1% 10PPM 1KRL



TE Part #710032-4
XCT 6-6



TE Part #710026-7
XCT 25-10



TE Part #710031-6
XCT 10-8



TE Part #710030-7
XCT 16-10



Documents

Product Drawings

[XCT 16-6](#)

English

CAD Files

Customer View Model

[ENG_CVM_CVM_710030-3_G.2d_dxf.zip](#)

English

[3D PDF](#)

3D

Customer View Model

[ENG_CVM_CVM_710030-3_G.3d_igs.zip](#)

English

Customer View Model

[ENG_CVM_CVM_710030-3_G.3d_stp.zip](#)

English

By downloading the CAD file I accept and agree to the [Terms and Conditions](#) of use.

Datasheets & Catalog Pages

[XCT-COPPER-TUBULAR-TERMINALS-FITTINGS](#)

English