



CorePro LED PLL



CorePro LED PLL HF 12W 840 4P 2G11

Philips CorePro LED PLL is the ideal uplamping solution for downlights & luminaires in a wide range of general lighting applications. It integrates a LED light source into a traditional fluorescent form factor to offer superb energy savings over a lifetime that's twice as long as fluorescent alternatives.

Product data

General Information	
Cap-Base	2G11 [2G11]
Nominal lifetime	30,000 hour(s)
Switching Cycle	50,000
Lighting Technology	LED
Flux measurement reference	Sphere
Light Technical	
Color Code	840 [CCT of 4000K]
Beam Angle (Nom)	160 degree(s)
Luminous Flux	1,500 lumen
Color Designation	Cool White (CW)
Correlated Color Temperature (Nom)	4000 K
Luminous Efficacy (rated) (Nom)	125 lm/W
Color Consistency	<6
Color rendering index (CRI)	80
LLMF At End Of Nominal Lifetime (Nom)	70 %
Operating and Electrical	
Line Frequency	20K-80K Hz
Input Frequency	20K-80K Hz
Power Consumption	12 W
Starting Time (Nom)	0.5 s

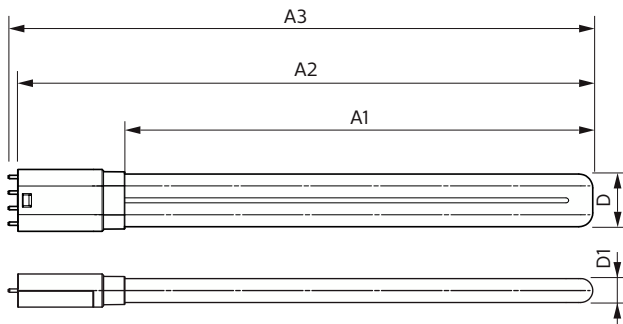
Warm-up time to 60% light	0.5 s
Power Factor (Fraction)	0.9
Voltage (Nom)	20-60 V
Temperature	
Ambient temperature range	-20 °C to 45 °C
T-Case Maximum (Nom)	70 °C
Controls and Dimming	
Dimmable	No
Mechanical and Housing	
Bulb Finish	Frosted
Bulb Material	Glass
Product Length	300 mm
Bulb Shape	Tube, single-ended
Approval and Application	
Energy Efficiency Class	E
Energy Saving Product	Yes
Approval Marks	RoHS compliance TUV CE marking KEMA Keur certificate
Energy Consumption kWh/1000 h	12 kWh

CorePro LED PLL

EPREL Registration Number	1370822
EU RoHS compliant	Yes
Product Data	
Full product code	871951448682900
Order product name	CorePro LED PLL HF 12W 840 4P 2G11
Order code	929003579102

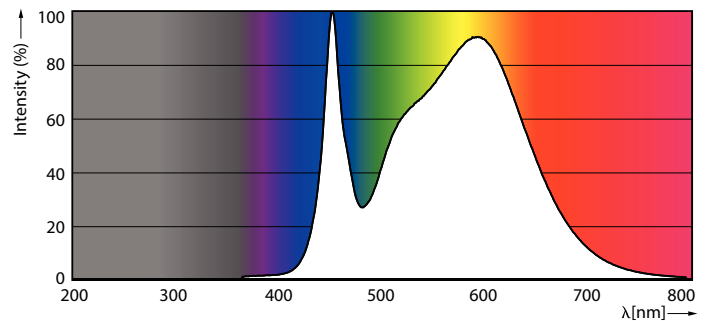
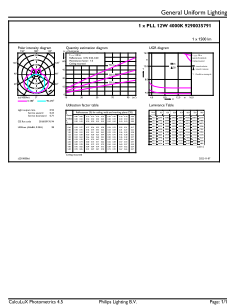
Numerator - Quantity Per Pack	1
Numerator - Packs per outer box	10
Material number (12NC)	929003579102
Full product name	CorePro LED PLL HF 12W 840 4P 2G11
EAN/UPC - Case	8719514486836

Dimensional drawing



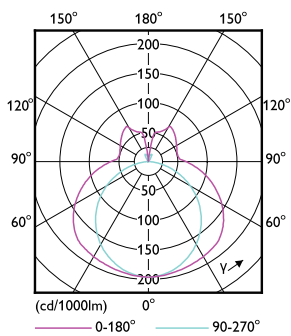
Product	D1	D2	A1	A2	A3
CorePro LED PLL HF 12W 840 4P 2G11	17 mm		250 mm	312 mm	319 mm

Photometric data



General uniform lighting - CorePro LED PLL HF 12W 840 4P 2G11

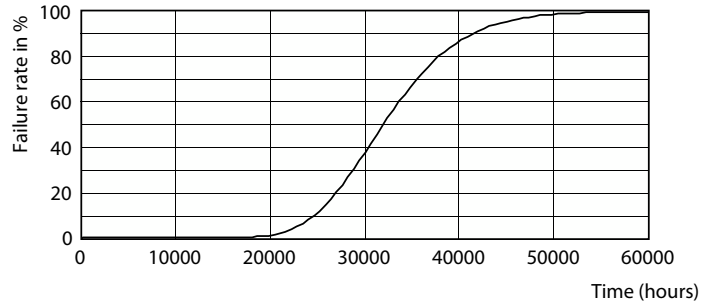
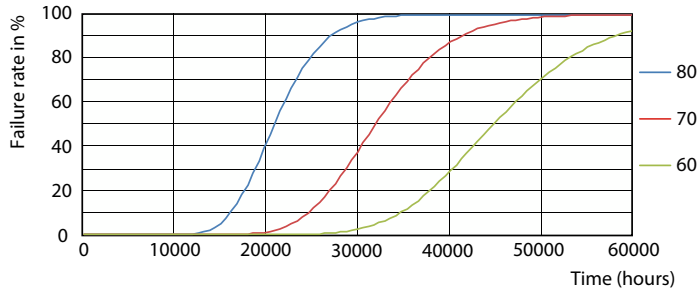
Spectral Power Distribution Colour



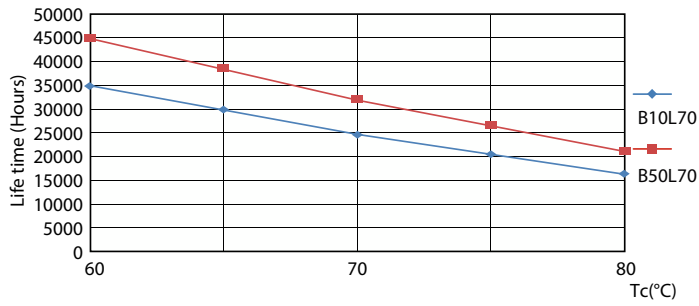
Light Distribution Diagram

CorePro LED PLL

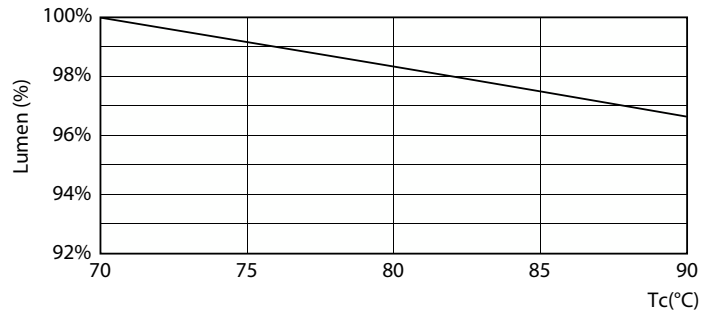
Lifetime



Life Expectancy Diagram

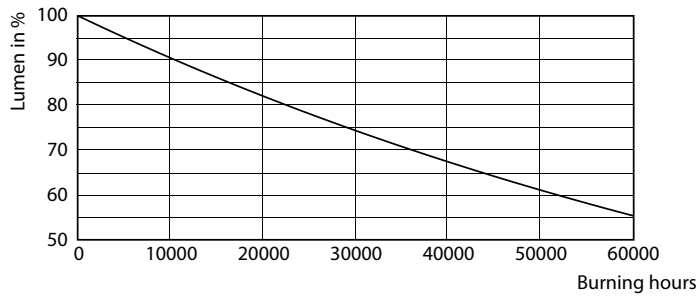


Life Expectancy Diagram - CorePro LED PLL HF 12W 840 4P 2G11



Life Expectancy Diagram

Lumen Maintenance Diagram



Lumen Maintenance Diagram - CorePro LED PLL HF 12W 840 4P 2G11

CorePro LED PLL

