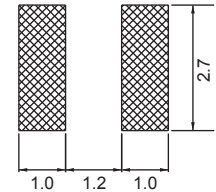
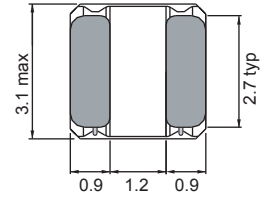
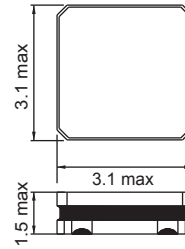
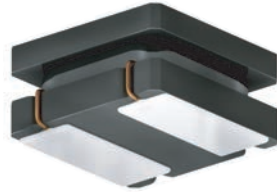


1212 FPS

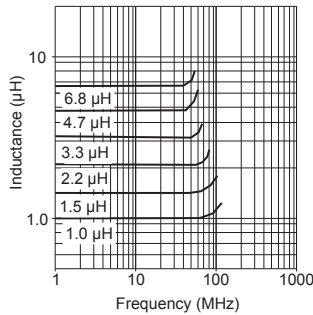
Shielded



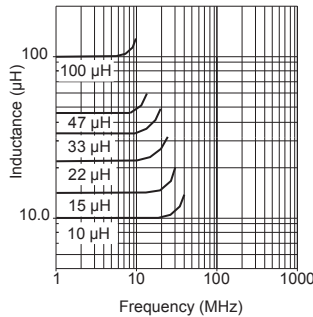
Recommended layout for solder pads

Chip Inductors for Power Applications

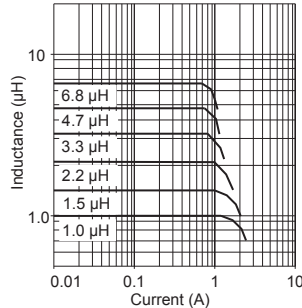
Typical Ls vs Frequency (f)



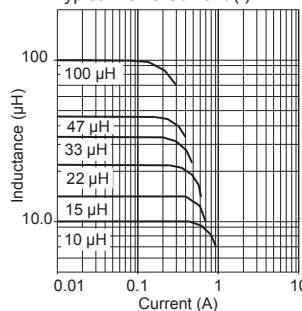
Typical Ls vs Frequency (f)



Typical Ls vs Current (I)



Typical Ls vs Current (I)



Part No	Inductance	f _L	Tol	SRF	DCR (Ω)		Rated DC Current (A)			
	L (μH)	(MHz)	± (%)	min (MHz)	typ	max	I _{sat}		I _{rms}	
1212FPS-1R0X-01	1.0	1.0	20,30	145	0.040	0.048	2.35	2.10	2.35	2.10
1212FPS-1R5X-01	1.5	1.0	20,30	130	0.055	0.066	2.00	1.80	2.10	1.90
1212FPS-2R2X-01	2.2	1.0	20,30	90	0.060	0.072	1.65	1.48	1.80	1.60
1212FPS-3R3X-01	3.3	1.0	20,30	75	0.093	0.112	1.40	1.21	1.60	1.45
1212FPS-4R7X-01	4.7	1.0	20,30	65	0.113	0.136	1.20	1.08	1.40	1.25
1212FPS-6R8X-01	6.8	1.0	20,30	50	0.176	0.211	1.05	0.90	1.10	0.90
1212FPS-100X-01	10	1.0	20,30	45	0.234	0.276	0.88	0.75	1.00	0.87
1212FPS-150X-01	15	1.0	20,30	33	0.352	0.422	0.68	0.58	0.80	0.65
1212FPS-220X-01	22	1.0	20,30	28	0.510	0.622	0.58	0.47	0.60	0.55
1212FPS-330X-01	33	1.0	20,30	22	0.799	0.959	0.46	0.39	0.50	0.45
1212FPS-470X-01	47	1.0	20,30	18	1.172	1.406	0.38	0.32	0.40	0.40
1212FPS-101X-01	100	1.0	20,30	11	2.433	2.920	0.27	0.23	0.29	0.25

Core Material : Ferrite

Revision date : 11 Aug 2014

SPQ : Taped / Reel 2000 [-01]

● Bold figure for Tol% is standard

● All dimensions in mm