



## PKE32 basic device

Part no. **PKE32**

Article no. **121722**



Powering Business Worldwide™

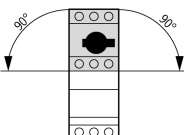
### Delivery programme

Single unit/Complete unit				Element
Setting range of useable overload releases	$I_r$	CSA	8-32	
Setting range of overload releases	$I_r$	A	-	
Function				Without overload releases
Motor output/rated motor current				
<b>Motor rating</b>	<b>AC-3 rated motor current</b>			
	220, 230 240 V	380, 400, 415 V	440 V	500 V
P [kW]	I [A]	I [A]	I [A]	I [A]
2.2	8.7			
3	11.5			
4	14.8	8.5		
5.5	19.6	11.3	10.2	9
7.5	26.4	15.2	13.8	12.1
11		21.7	19.8	17.4
15		29.3	26.6	23.4
18.5				28.9
22				
30				

### Approvals

Product Standards	UL508; CSA-C22.2 No.14-10; IEC60947-4-1; CE marking
UL File No.	E36332
UL CCN	NLRV
CSA File No.	12528
CSA Class No.	3211-05
NA Certification	UL listed, CSA certified
Specially designed for NA	No

### General

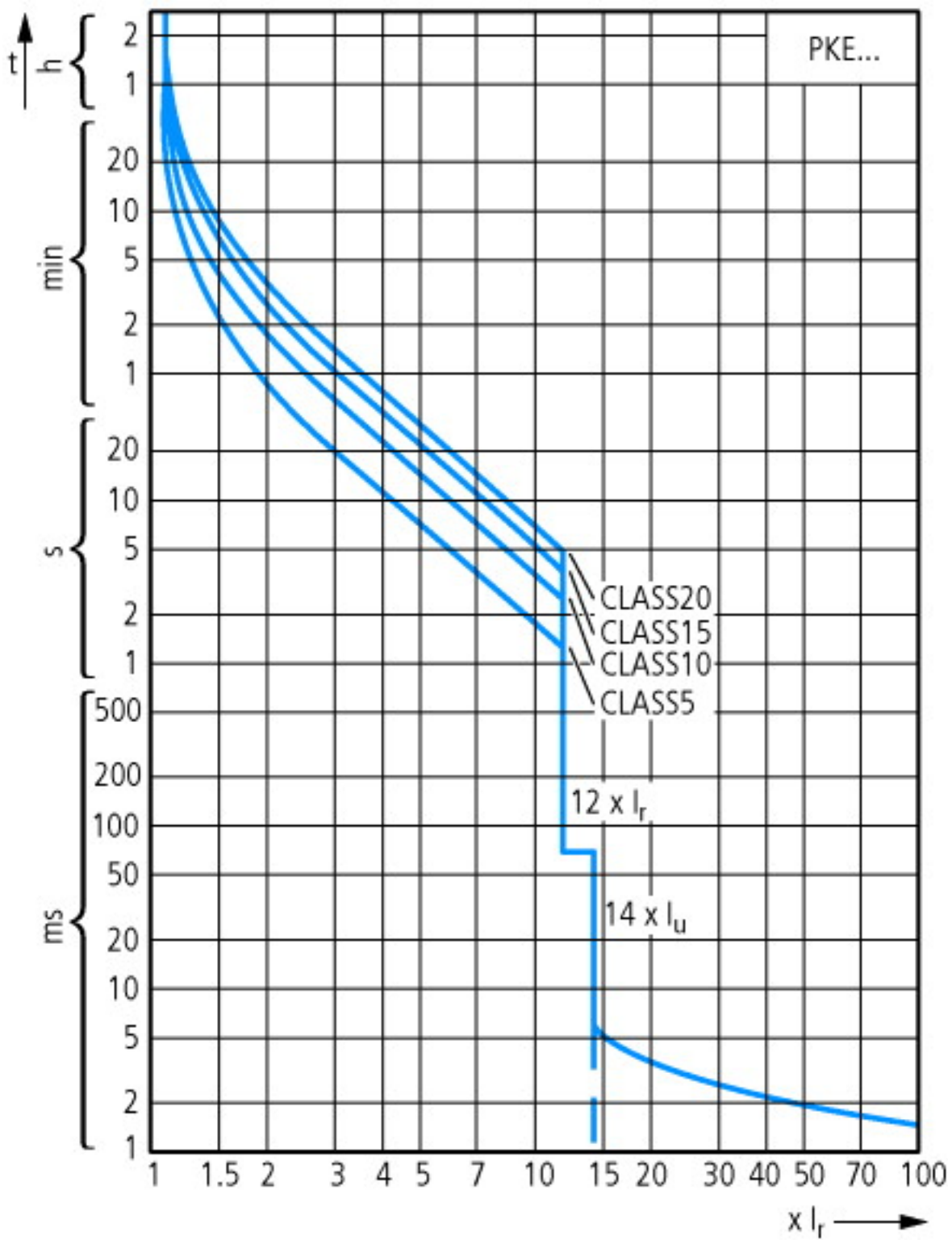
Standards			IEC/EN 60947, VDE 0660
Climatic proofing			Damp heat, constant to IEC 60068-2-78 Damp heat, cyclic to IEC 60068-2-30
Ambient temperature		°C	
Storage		°C	-40 - +80
Open		°C	-20 - +55
Enclosed		°C	-20 - +40
Mounting position			
Direction of incoming supply			as required
Degree of protection			
Device			IP20
Terminations			IP00
EN50274 busbar tag shroud			Finger and back-of-hand proof
Mechanical shock resistance half-sinusoidal shock 10 ms to IEC 60068-2-27		g	25
Altitude		m	2000
Terminal capacity screw terminals		mm <sup>2</sup>	
Solid		mm <sup>2</sup>	1 x (1 - 6) 2 x (1 - 6)
Flexible with ferrule to DIN 46228		mm <sup>2</sup>	1 x (1 - 6) 2 x (1 - 6)
Solid or stranded		AWG	18 - 10
Specified tightening torque for terminal screws			

Main cable		Nm	1.7
Control circuit cables		Nm	1
<b>Main conducting paths</b>			
Rated impulse withstand voltage	$U_{imp}$	V AC	6000
Overtoltage category/pollution degree			III/3
Rated operational voltage	$U_e$	V AC	690
Rated uninterrupted current = rated operational current	$I_u = I_e$	A	32
Rated frequency	f	Hz	40 - 60
Lifespan, mechanical	Operations	x $10^6$	0.05
Lifespan, electrical (AC-3 at 400 V)	Operations	x $10^6$	0.05
Maximum operating frequency		Ops./ h	
Max. operating frequency		Ops./ h	60
Motor switching capacity		kA <sub>rms</sub>	
AC-3 (up to 690 V)		A	32
<b>Trip blocks</b>			
Temperature compensation		°C	-5 – 40 (to IEC/EN 60947, VDE 0660) -25 – 55 (operating range)
Temperature compensation residual error for T > 40 °C			$\pm 0.1\%/K$
Setting range of overload releases			0.25 - 1 x $I_u$
Fixed short-circuit release			Basic device 14 x $I_u$
Short-circuit release tolerance			± 20%
Phase-failure sensitivity			yes

### Technical data ETIM 4.0

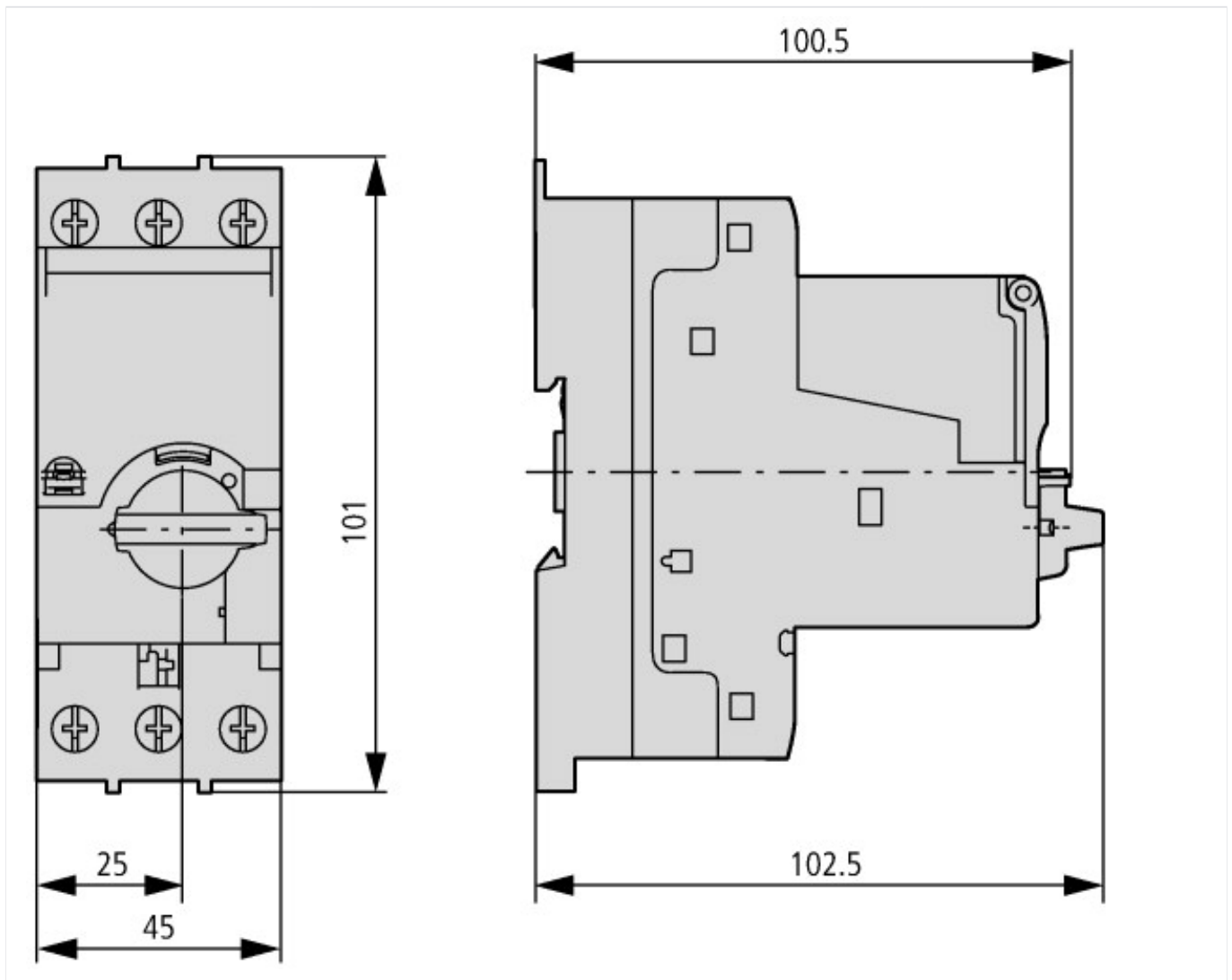
Rated operation power at AC-3, 400 V		kWh	0
With integrated auxiliary switch			No
Rated permanent current $I_u$		A	32
With integrated under voltage release			No
Number of poles			3
Degree of protection (IP)			IP20
Connection type main current circuit			Screw connection

### Characteristics



Tripping characteristic curves, wide-range circuit breaker PKE

## Dimensions



### Additional product information (links)

<b>IL03402019Z (AWA1210-2490) PKE motor-protective circuit-breaker with wide-range overload protection</b>	
IL03402019Z (AWA1210-2490) PKE motor-protective circuit-breaker with wide-range overload protection	<a href="ftp://ftp.moeller.net/DOCUMENTATION/AWA_INSTRUCTIONS/IL03402019Z2011_09.pdf">ftp://ftp.moeller.net/DOCUMENTATION/AWA_INSTRUCTIONS/IL03402019Z2011_09.pdf</a>
<b>IL03402023Z (AWA1210-2705) Trip block for solid-state motor-protective circuit-breaker</b>	
IL03402023Z (AWA1210-2705) Trip block for solid-state motor-protective circuit-breaker	<a href="ftp://ftp.moeller.net/DOCUMENTATION/AWA_INSTRUCTIONS/IL03402023Z2011_08.pdf">ftp://ftp.moeller.net/DOCUMENTATION/AWA_INSTRUCTIONS/IL03402023Z2011_08.pdf</a>
<b>MN03402004Z-DE/EN Motor-protective circuit-breaker PKE12 and PKE32; Overload monitoring of Ex e motors</b>	
MN03402004Z-DE/EN Motor-protective circuit-breaker PKE12 and PKE32; Overload monitoring of Ex e motors - Deutsch / English	<a href="ftp://ftp.moeller.net/DOCUMENTATION/AWB_MANUALS/MN03402004Z_DE_EN.pdf">ftp://ftp.moeller.net/DOCUMENTATION/AWB_MANUALS/MN03402004Z_DE_EN.pdf</a>
Motor starters and "Special Purpose Ratings" for the North American market	<a href="http://www.moeller.net/binary/ver_techpapers/ver953en.pdf">http://www.moeller.net/binary/ver_techpapers/ver953en.pdf</a>
Busbar Component Adapters for modern Industrial control panels	<a href="http://www.moeller.net/binary/ver_techpapers/ver960en.pdf">http://www.moeller.net/binary/ver_techpapers/ver960en.pdf</a>