

Part No. 1002857

EtherHelix™ Mission Critical GPS Antenna

1.575 GHz Circularly Polarized

Supports: Aviation, GPS Navigation Systems, Fire & Rescue, Asset Tracking, Automotive, Security, Home Network application



EtherHelix GPS Antenna Quadhelix design

1.575 GHz

KEY BENEFITS

Smallest Effective Size

KYOCERA AVX's antennas require a smaller keep-out area for surrounding components, leading to a smaller effective size.

High Performance

KYOCERA AVX's high efficiency and simple design rules lower development risk and speed time-to-market without sacrificing performance. Plus, high RF selectivity eliminates the cost and space for band-pass circuitry.

Reliability

Products are the latest RoHS version compliant.

APPLICATIONS

- GPS enabled phones
- GPS navigation systems
- Mobile devices
- Tracking
- Wireless Monitoring
- IoT
- Medical/Healthcare applications
- Mission Critical Applications
- Commercial/Communication
- Radar
- Industrial Automotive
- First Responders

EtherHelix™ series of GPS Quad Helix Isolated Magnetic Dipole™ (IMD) antennas deliver on the key needs of device designers for higher functionality and performance in the worlds smallest Stand alone Circular polarized external and internal designs. These innovative antennas provide compelling advantages for GPS enabled cell phones, navigation equipment, and other mobile devices.

Real-World Performance and Implementation

Antennas may look alike on the outside, but the important difference is inside. Other antennas may contain simple PIFA or monopole patch designs that inter-act with their surroundings, complicating component layout or changing performance with use position. KYOCERA AVX's antennas utilize patented IMD technology to deliver a unique size and performance combination.

Electrical Specifications

Measured in Free space

Frequency	GPS - 1.575 GHz
Polarization	Right Hand CP (RHCP)
Peak Gain (dBi)	-3.0 [-5 dB at Zenith]
Beam-width	120 degrees (Axial Ratio < 3dB)
Axial Ratio (dB)	< 1.5 at zenith
Average Efficiency (%)	27
VSWR Match	2.0:1 max
Feed Point Impedance	50 ohms unbalanced
Power Handling	0.5 Watt CW

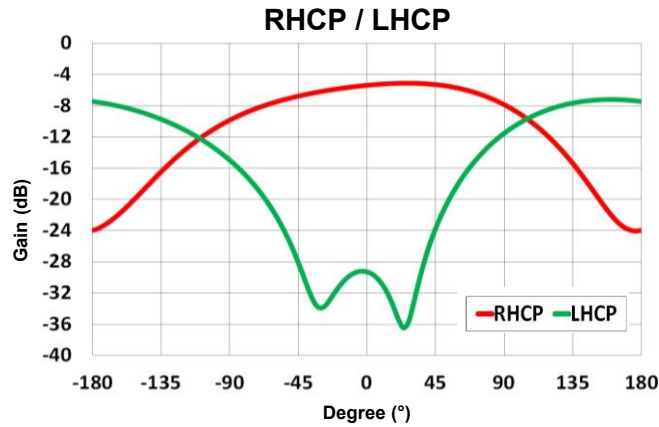
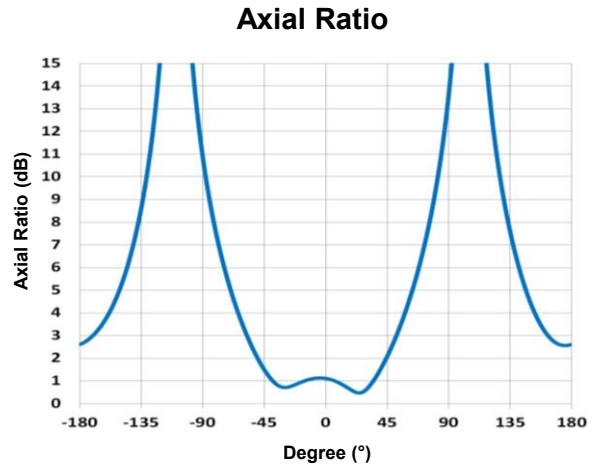
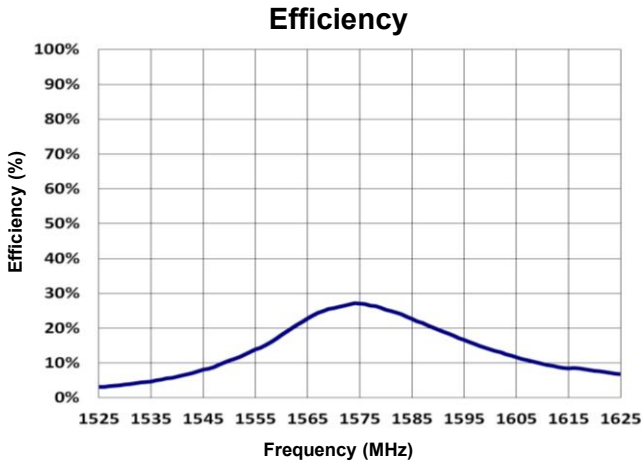
Mechanical Specifications & Ordering Part Number

Ordering Part Number	1002857
Size (mm)	34.93 height 15.0 diameter
Connector	SMA Male
Weight (grams)	11.8
Mechanical Rating	IP 68 UV Protected
Connector	SMA Male
Operative Temperature (°C)	-40 to +85
Humidity(°C)	95% RH @ 54
Packaging	Trays: 60 per tray - 300 per master carton

KYOCERA AVX's EtherHelix GPS Antenna Specifications.
KYOCERA AVX produces a wide variety of standard and custom antennas to meet user needs.

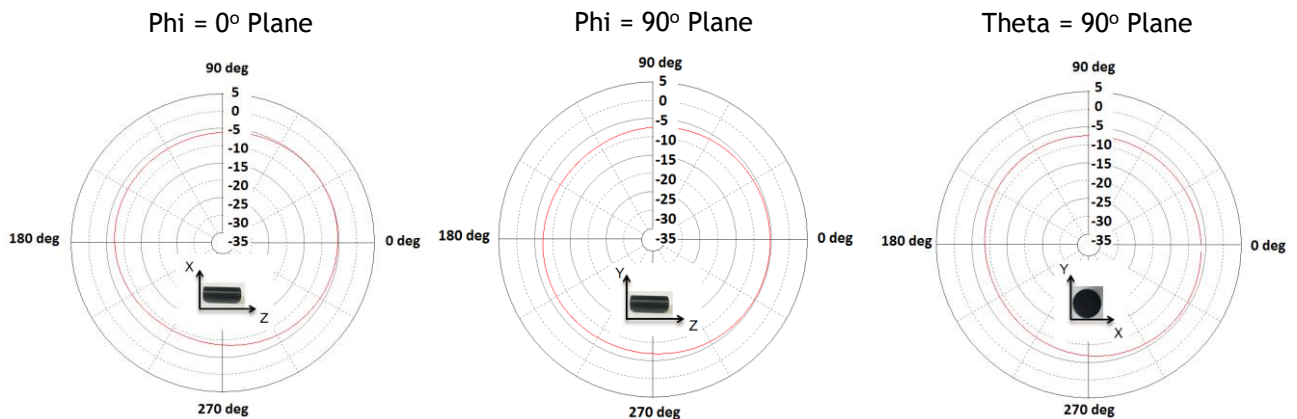
Efficiency, Axial Ratio, RHCP / LHCP Plots

Typical performance, measured in free space



Antenna Radiation Patterns

Typical performance, measured in free space @ 1575 GHz

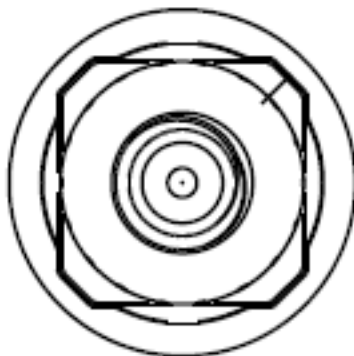
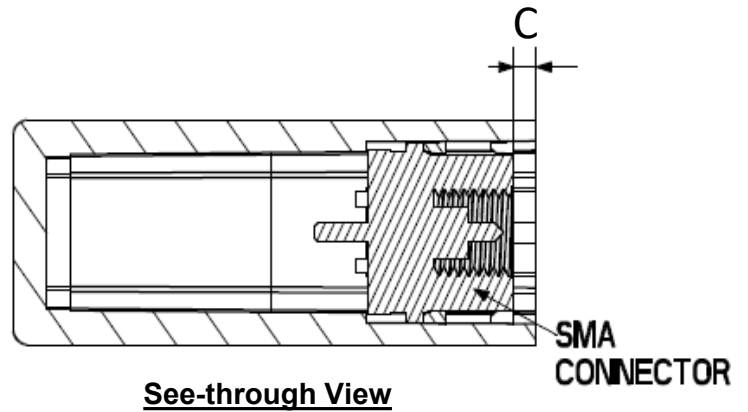
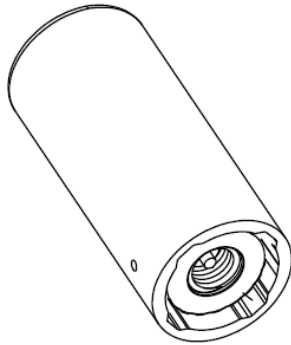


KYOCERA AVX's EtherHelix GPS Antenna Specifications.
 KYOCERA AVX produces a wide variety of standard and custom antennas to meet user needs.

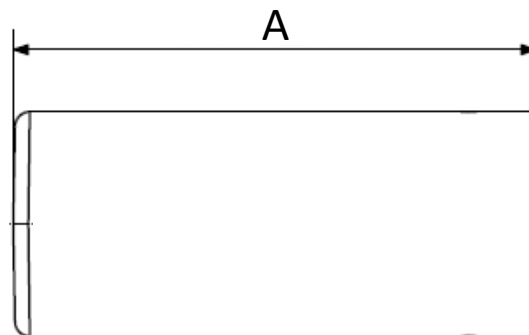
Mechanical Dimensions

Typical antenna dimensions (mm)

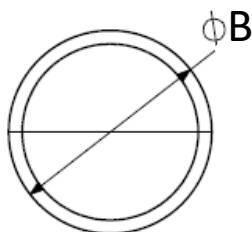
Part Number	A (mm)	B (mm)	C (mm)
1002857	34.93 ± 0.5	15.0 ± 0.5	1.5 ± 0.3



Connector View



Front View



Diameter View



Bottom View