



PE-through terminal, Front installation, accessory for Load disconnector 3LD3

Model	
product brand name	SETRON
product designation	PE through-type terminal
design of the product	accessories for 3LD3 switch disconnectors
AWG number as coded connectable conductor cross section	
• minimum	14
• maximum	6
tightening torque for terminal connection recommended	3 N·m
type of connectable conductor cross-sections for main contacts	
• finely stranded with core end processing	1x (2.515 mm <sup>2</sup> )
• solid or stranded	1x (2.5 ... 16 mm <sup>2</sup> )
<b>General Product Approval</b>	<b>other</b> <span style="float: right;"><b>Environment</b></span>

[Confirmation](#)



[Miscellaneous](#)

[Confirmation](#)

[Environmental Confirmations](#)

### Further information

**Siemens has decided to exit the Russian market (see here).**

<https://press.siemens.com/global/en/pressrelease/siemens-wind-down-russian-business>

**Siemens is working on the renewal of the current EAC certificates.**

Please contact your local Siemens office on the status of validity of the EAC certification if you intend to import or offer to supply these products to an EAC relevant market (other than the sanctioned EAEU member states Russia or Belarus).

**Information on the packaging**

<https://support.industry.siemens.com/cs/ww/en/view/109813875>

**Information- and Downloadcenter (Catalogs, Brochures,...)**

<http://www.siemens.com/lowvoltage/catalogs>

**Industry Mall (Online ordering system)**

<https://mall.industry.siemens.com/mall/en/en/Catalog/product?mlfb=3LD9340-3B>

**Service&Support (Manuals, Certificates, Characteristics, FAQs,...)**

<https://support.industry.siemens.com/cs/ww/en/ps/3LD9340-3B>

**Image database (product images, 2D dimension drawings, 3D models, device circuit diagrams, ...)**

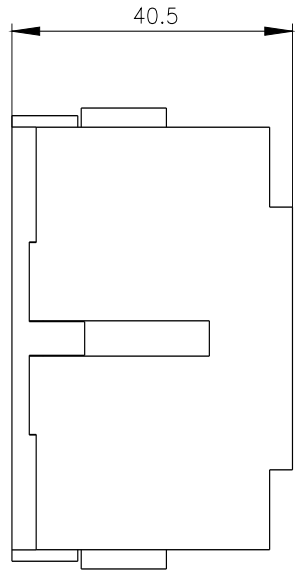
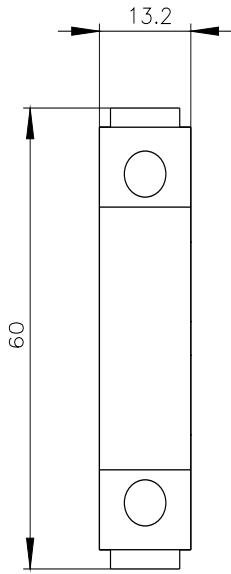
[http://www.automation.siemens.com/bilddb/cax\\_en.aspx?mlfb=3LD9340-3B](http://www.automation.siemens.com/bilddb/cax_en.aspx?mlfb=3LD9340-3B)

**CAX-Online-Generator**

<http://www.siemens.com/cax>

**Tender specifications**

<http://www.siemens.com/specifications>



---

last modified:

9/14/2022 

