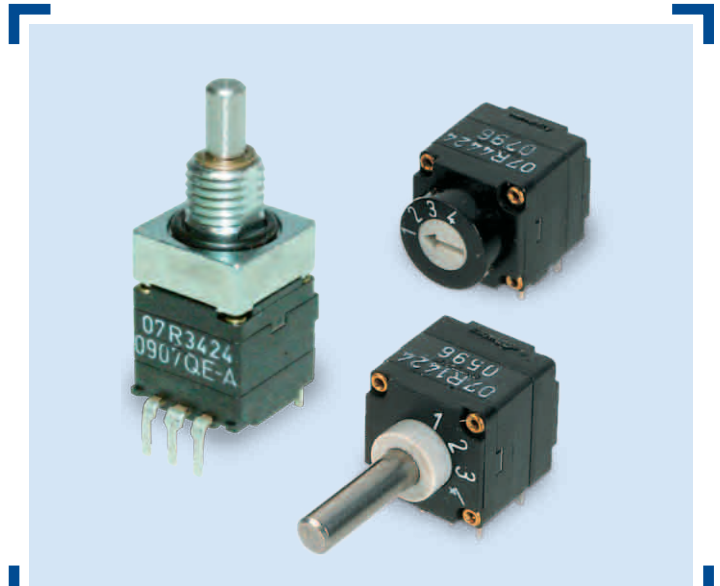


Selector Switch Type 07R

- Miniature 4 (5) positions selector switch
- PCB mounting (THT, reflow version on request)
- Up to 3.5 Ncm switching torque
- Gold plated contacts
- Washable (sealed contact system)
- Optional IP68 front panel sealing
- Operating temperature range: -40 to +85°C
- Various options and customization



Standard Product Variety

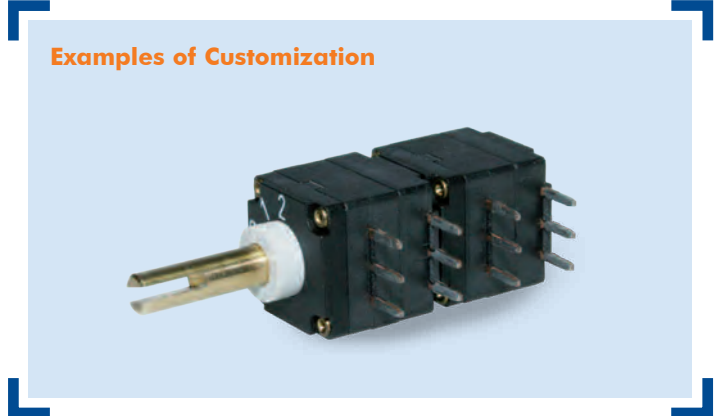
- Vertical or horizontal mounting
- Shorting or non-shorting
- 2.2 or 3.5 Ncm switching torque
- IP60 or IP68 front panel sealing
- Number of positions
- Bushing style
- Shaft style and length

Possible Customization

- Shaft dimensions and shape
- Bushing dimensions
- Switching torque
- Others

Typical Applications

- Industrial controls
- Avionics, instrumentation, test systems
- Medical and audio equipment
- Mobile defense equipment



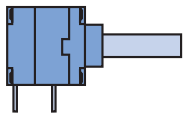
Examples of Customization

- Tandem version; two 07R switches cascaded (same shaft)

Selector Switch Type 07R

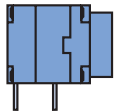
Preference Types Selection Chart¹

Horizontal



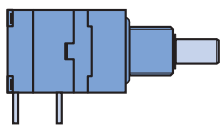
Basic Style

Switching Mode	Function (Poles x Positions)	Order Number
Shorting	1 x 4	07R1423
Non-shorting	1 x 4	07R1424
Shorting	1 x 5 (4 electrical positions)	07R1513
Non-shorting	1 x 5 (4 electrical positions)	07R1514



Screwdriver Actuation (with Bezel)

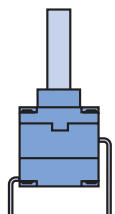
Switching Mode	Function (Poles x Positions)	Order Number
Shorting	1 x 4	07R4423
Non-shorting	1 x 4	07R4424
Shorting	1 x 5 (4 electrical positions)	07R4513
Non-shorting	1 x 5 (4 electrical positions)	07R4514



Threaded Bushing, IP68

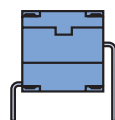
Switching Mode	Function (Poles x Positions)	Order Number
Shorting	1 x 4	07R1423-30000
Non-shorting	1 x 4	07R1424-30000
Shorting	1 x 5 (4 electrical positions)	07R1513-30000
Non-shorting	1 x 5 (4 electrical positions)	07R1514-30000

Vertical



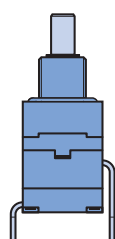
Basic Style

Switching Mode	Function (Poles x Positions)	Order Number
Shorting	1 x 4	07R3423
Non-shorting	1 x 4	07R3424
Shorting	1 x 5 (4 electrical positions)	07R3513
Non-shorting	1 x 5 (4 electrical positions)	07R3514



Screwdriver Actuation

Switching Mode	Function (Poles x Positions)	Order Number
Shorting	1 x 4	07R2423
Non-shorting	1 x 4	07R2424
Shorting	1 x 5 (4 electrical positions)	07R2513
Non-shorting	1 x 5 (4 electrical positions)	07R2514



Threaded Bushing, IP68

Switching Mode	Function (Poles x Positions)	Order Number
Shorting	1 x 4	07R3423-30000
Non-shorting	1 x 4	07R3424-30000
Shorting	1 x 5 (4 electrical positions)	07R3513-30000
Non-shorting	1 x 5 (4 electrical positions)	07R3514-30000

¹ For other types/options, see type key.

Selector Switch Type 07R

Specifications

Mechanical Data

Resolution:5 positions max. (36° indexing)
Switching torque (new condition):.....2.2 or 3.5 Ncm (+/- 25%)
Rotational life:10,000 cycles min.
End stop strength:45 Ncm min.
Fastening torque of nut:100 Ncm max.

Electrical Data

Function:1 pole, 2 to 4 positions (5 pos. indexing has 4 electrical positions; pos. 0 has no connection)
Switching mode:Shorting or non-shorting
Load current:0.2 A max. (resistive load)
Switching voltage:42 VDC max.
Contact resistance (new condition):50 mOhms max.
Insulation resistance:10¹¹ Ohms min. (contact to contact/housing)
Dielectric withstanding voltage:500 VDC during 60 seconds

Material Data

Shaft:Stainless steel
Housing:Zinc diecast, fiber enforced high performance plastic
Nut:Brass
Contact system:CuBe alloy, AuCo plated (hard gold)
Soldering leads:CuBe alloy, tin plated
O-rings:NBR (Nitril), 70 shore

Environmental Data

Operating/storage temperature range:-40 to +85°C
IP sealing:IP60, optional IP68 (2 bar, 1 hour) shaft/front panel sealing
Washable (sealed contact system)
Vibration:10 Grms max. @ 10 to 2000 Hz

Packaging Sizes

Tray:50 or 200 pcs. (antistatic tray: 100 pcs.)

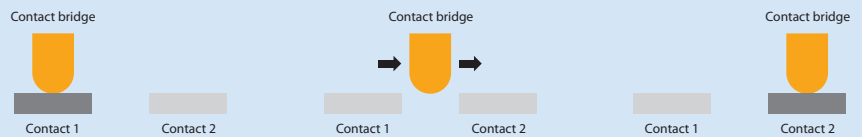
Soldering Conditions

Hand soldering:340°C max. during 2 s max.
Wave soldering:280°C max. peak temperature during 5 s max.

Switching Modes

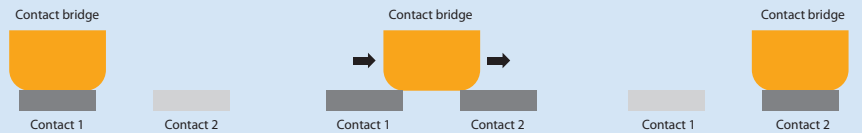
Non-Shorting

(break before make)



Shorting

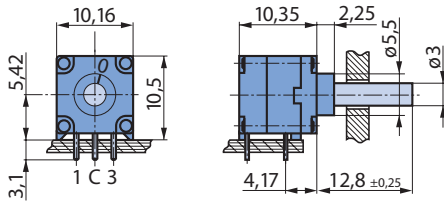
(make before break)



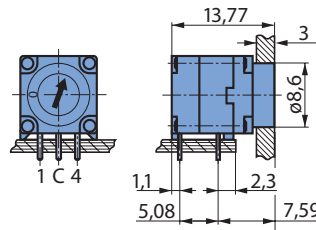
Selector Switch Type 07R

Drawings

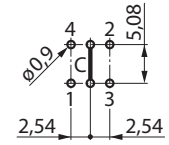
Horizontal, Basic Style



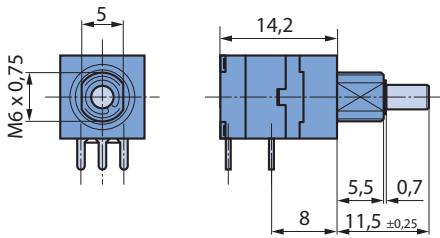
Horizontal, Screwdriver Actuation (with Bezel)



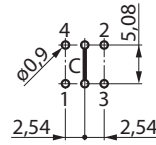
Drilling diagram
(View from mounting side)



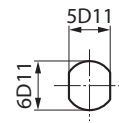
Horizontal, Threaded Bushing



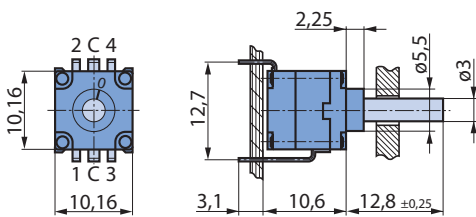
Drilling diagram
(View from mounting side)



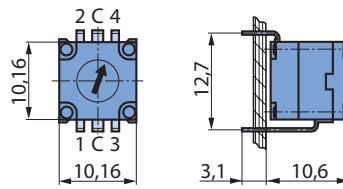
Front panel cut out



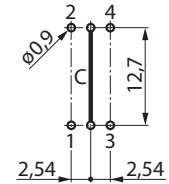
Vertical, Basic Style



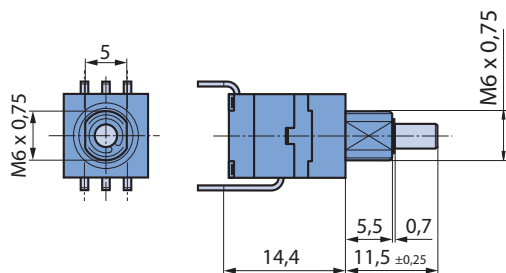
Vertical, Screwdriver Actuation



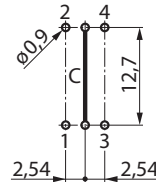
Drilling diagram
(View from mounting side)



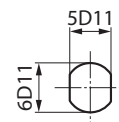
Vertical, Threaded Bushing



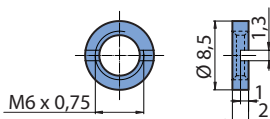
Drilling diagram
(View from mounting side)



Front panel cut out



Slotted Nut



Ordering number (50 pcs. bags):

Brass: 4424-28

Stainless steel: 4424-30

Selector Switch Type 07R

Type Key

0 7 R | **X X X X - X X X X X**

Style

- 0 - Horizontal (screwdriver)
- 1 - Horizontal (shaft)
- 2 - Vertical (screwdriver)
- 3 - Vertical (shaft)
- 4 - Horizontal (screwdriver with bezel)
- 5 - Vertical (screwdriver with bezel)

Number of Positions

- 2 - 2 pos. (1-2)
- 3 - 3 pos. (1-3)
- 4 - 4 pos. (1-4)
- 5 - 5 pos. (0-4; 0 has no connection)

1 to 4/5 Positions

- 1 - 5 pos.
- 2 - 1 to 4 pos.

Switching Mode

- 3 - Shorting
- 4 - Non-shorting

Shaft Length (AL)

- 000 - Basic style: 12.8 mm
Threaded bushing: 11.5 mm
- xxx - Custom¹
(e.g. 10.5 mm = 105)

Bushing, IP Sealing

- 00 - None
- 20 - Threaded (nut supplied)
- 30 - Threaded, IP68 (nut supplied)

Torque, Packaging

- - 2.2 Ncm, tray (50/200 pcs.)
- V - 2.2 Ncm, antistatic tray (100 pcs.)
- T - 3.5 Ncm, tray (50/200 pcs.)
- S - 3.5 Ncm, antistatic tray (100 pcs.)

¹ Customized Shaft Length

Please state shaft length (AL) measured from mounting face (max. AL basic style: 30 mm, threaded bushing: 28.7 mm).

