

RES.CUR.OP.CIRCUIT BREAKER TYPE A 25A 3+N-  
POLE 30MA 400V 4MW



Figure similar

| Model  |    |   |
|--|----|---|
| product brand name                                   |    | SENTRON   |
| Product designation                                  |    | RCCB  |
| Design of the product                                |    | Instantaneous   |
| General technical data                               |    |   |
| Number of poles                                      |    | 4   |
| Size of installation devices / acc. to DIN 43880     |    | 1   |
| Protection against electrical shock                  |    | Finger and back-of-hand safe  |
| Short-circuit current rating                         | kA | 10  |
| circuit-breaker / Design                             |    | 5SV3  |
| Mechanical service life (switching cycles) / typical |    | 10 000  |
| Overvoltage category                                 |    | III   |
| Supply voltage                                       |    |   |
| Supply voltage                                       |    |   |
| • with AC / Rated value                              | V  | 400   |
| • for testing equipment / minimum                    | V  | 195   |
| Protection class                                     |    |   |
| Protection class IP                                  |    | IP20, if the distribution board is installed, with connected conductors |
| Switching capacity                                   |    |   |
| Switching capacity current                           |    |   |
| • acc. to EN 60898 / Rated value                     | kA | 0.8   |
| Dissipation  |    |   |

|  |   |     |
|--|---|-----|
| <b>Active power loss</b>   |   |     |
| <ul style="list-style-type: none"> <li>for rated value of the current / with AC / in hot operating state / per pole</li> </ul> | W | 3.9 |

### Electricity

|  |    |    |
|--|----|----|
| <b>Tripping residual current / Rated value</b> | mA | 30 |
| rated current $I_n$ / IEC, DIN/VDE / at 40 Cel | A  | 25 |
| <b>Type of fault current</b>                   |    | A  |
| Current / with AC / Rated value                | A  | 25 |
| Surge current resistance / Rated value         | kA | 1  |

### Product details

|  |  |     |
|--|--|-----|
| <b>Product property</b>  |  |     |
| <ul style="list-style-type: none"> <li>halogen-free</li> </ul> |  | Yes |
| <ul style="list-style-type: none"> <li>silicon-free</li> </ul> |  | Yes |
| Product expansion / can be installed / supplementary devices   |  | Yes |

### Number

|   |  |    |
|---|--|----|
| <b>Number of test cycles / for environmental testing / acc. to IEC 60068-2-30</b> |  | 28 |
|---|--|----|

### Connections

|   |                 |               |
|---|-----------------|---------------|
| <b>Connectable conductor cross-section / stranded</b>     |                 |               |
| <ul style="list-style-type: none"> <li>minimum</li> </ul> | mm <sup>2</sup> | 0.75          |
| <ul style="list-style-type: none"> <li>maximum</li> </ul> | mm <sup>2</sup> | 35            |
| <b>Connectable conductor cross-section / solid</b>        |                 |               |
| <ul style="list-style-type: none"> <li>minimum</li> </ul> | mm <sup>2</sup> | 0.75          |
| <ul style="list-style-type: none"> <li>maximum</li> </ul> | mm <sup>2</sup> | 35            |
| <b>Tightening torque / with screw-type terminals</b>      |                 |               |
| <ul style="list-style-type: none"> <li>minimum</li> </ul> | N·m             | 2.5           |
| <ul style="list-style-type: none"> <li>maximum</li> </ul> | N·m             | 3             |
| Position / of power supply cord                           |                 | top or bottom |

### Mechanical Design

|                              |    |                |
|------------------------------|----|----------------|
| <b>Height</b>                | mm | 90             |
| <b>Width</b>                 | mm | 72             |
| <b>Depth</b>                 | mm | 70             |
| <b>mounting position</b>     |    | any            |
| <b>Installation depth</b>    | mm | 70             |
| <b>Number of width units</b> |    | 4              |
| <b>Mounting type</b>         |    | DIN rail (REG) |
| <b>Net weight</b>            | g  | 366            |

### Environmental conditions

|   |    |     |
|---|----|-----|
| <b>Ambient temperature</b>                                |    |     |
| <ul style="list-style-type: none"> <li>minimum</li> </ul> | °C | -25 |

- maximum
- during storage / minimum permissible
- during storage / maximum permissible

|    |     |
|----|-----|
| °C | 45  |
| °C | -40 |
| °C | 75  |

## Certificates

### Equipment marking

- acc. to DIN EN 61346-2
- acc. to DIN EN 81346-2

F  
F

### General Product Approval



General  
Product  
Approval

Declaration of Conformity

[other](#)



## Further information

### Information- and Downloadcenter (Catalogs, Brochures,...)

<http://www.siemens.com/lowvoltage/catalogs>

### Industry Mall (Online ordering system)

<https://eb.automation.siemens.com/mall/en/WW/Catalog/Product/5SV33426>

### Service&Support (Manuals, Certificates, Characteristics, FAQs,...)

<http://support.automation.siemens.com/WW/view/en/5SV33426/all>

### Image database (product images, 2D dimension drawings, 3D models, device circuit diagrams, ...)

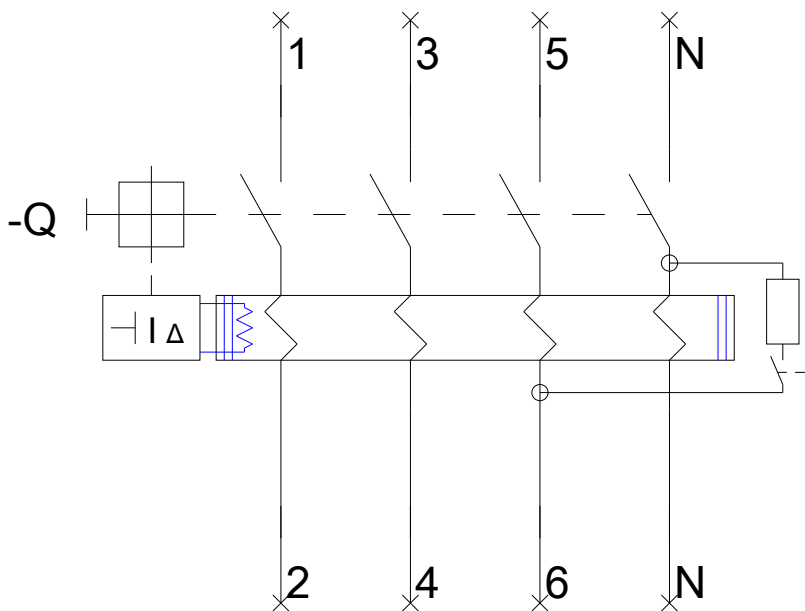
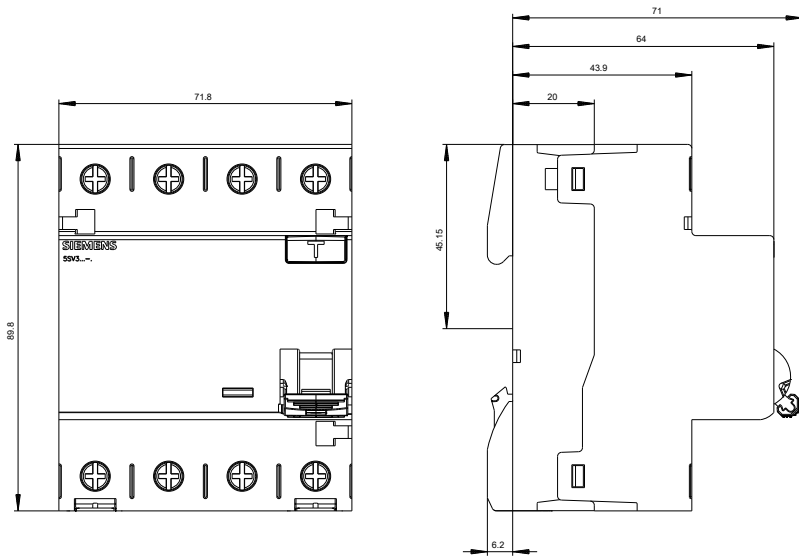
[http://www.automation.siemens.com/bilddb/cax\\_en.aspx?mlfb=5SV33426](http://www.automation.siemens.com/bilddb/cax_en.aspx?mlfb=5SV33426)

### CAX-Online-Generator

<http://www.siemens.com/cax>

### Tender specifications

<http://ausschreibungstexte.siemens.com/tiplv>



last modified:

05.05.2015