

Top Cut 4 indexable inserts, internal V36

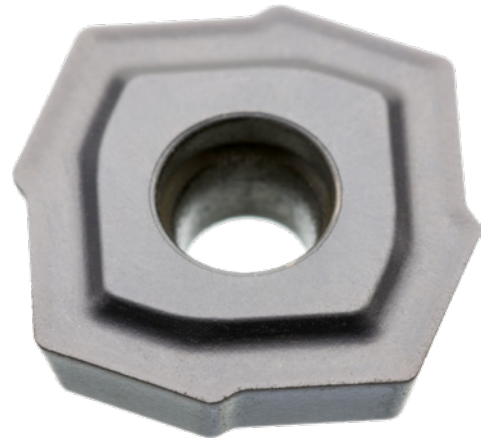
Cemented carbide type: WU25CH

WIDIA 

Application:

First choice for long-chipping materials, such as steel and stainless steel. Can be used even if low power consumption is required

Art. no.	11214 045
Brand	WIDIA
Manufacturer Part Number	5538606
Cutting material	SC
Surface	TiAlN
Suitable for indexable inserts type	E
Size of indexable insert	12 mm
Inner circle diameter	3.4 mm
Cutting width	9.8 mm
Thickness of indexable insert	3.6 mm
Corner radius	0.5 mm
Clearance angle	11 Degree
Carbide type	WU25CH
Gross Weight	0.006 kg
Product Group	1XC



EAN

4050839901838