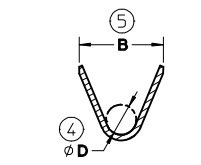
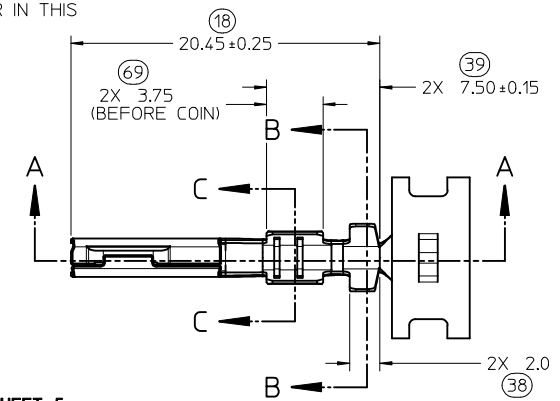
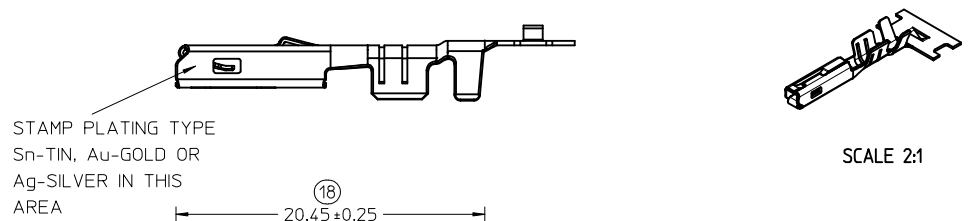
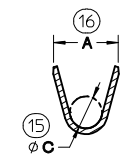


DIMENSIONS FOR LARGE POLARIZATION RIB TERMINAL ONLY



SECTION B-B SCALE 5:1

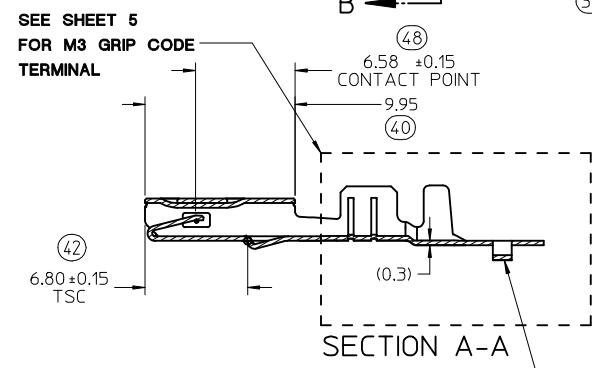
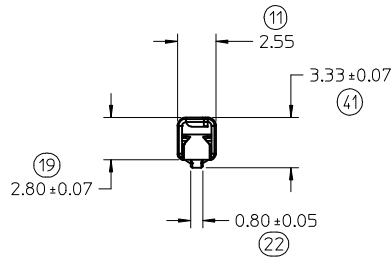


SECTION C-C SCALE 5:1

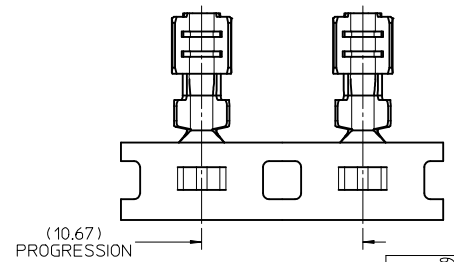
CARRIER BUMP DIRECTION
POINTS DOWN FOR TIN PLATED TERMINALS
POINTS UP FOR PRECIOUS PLATED TERMINALS

NOTES: (UNLESS OTHERWISE SPECIFIED)

- MATING TERMINAL SHOWN ON SD-33000-001
- MATERIAL: ASTM B422, UNS C19025, HR04
THICKNESS: 0.30 mm +0.01
TEMPER: FULL HARD (REF)
TENSILE: 496 MIN MPA
- TIN PLATED TERMINAL FINISH:
OVERALL UNDERPLATE ELECTRODEPOSITED NICKEL
OVERALL ELECTRODEPOSITED REFLOW TIN
- GOLD PLATED TERMINAL FINISH:
OVERALL UNDERPLATE ELECTRODEPOSITED DUCTILE SULFAMATE NICKEL
CONTACT AREA - ELECTRODEPOSITED GOLD
GRIP AREA - ELECTRODEPOSITED 100% TIN MATTE FINISH
- SILVER PLATED TERMINAL FINISH:
OVERALL UNDERPLATE ELECTRODEPOSITED DUCTILE SULFAMATE NICKEL
CONTACT AREA - ELECTRODEPOSITED PURE SILVER (0.5% MAX IMPURITIES) SEMI-BRIGHT FINISH
- SILVER ANTI-TARNISH : EVABRITE
GRIP AREA - ELECTRODEPOSITED 100% TIN MATTE FINISH
- MEETS PERFORMANCE SPECIFICATION FOR CABLE TO TERMINAL ELECTRICAL CRIMPS PER SAE/USCAR-21 (8/2001)
- MEETS PERFORMANCE STANDARD FOR AUTOMOTIVE ELECTRICAL CONNECTOR SYSTEMS FOR SAE/USCAR-2, REV. 4 (TEMP CLASS 3) (5/2004)
- MEETS ELECTRICAL CONNECTION SYSTEM DESIGN SPECIFICATION (SDS) REV.11 (5/2002)
- MEETS FIELD CORRELATED LIFE TEST (FCLT) PER SAE/USCAR-20 (6/2004)
- MEETS WIRING COMPONENT DESIGN GUIDELINES SAE/USCAR-12 REV 2 (12/2001)
- TSC ON A DIMENSION TO BE INTERPRETED AS DISTANCE TO A THEORETICAL SHARP CORNER AS IF THE RADIUS WERE NOT PRESENT
- REFERENCE 97BG-14474-AAB FOR LARGE POLARIZATION RIB CAVITY SPECIFICATION
- INSERTION FORCE (TINI) AVG. FROM PV TESTING -
3.8N LARGE POLARIZATION RIB
3.5N SMALL POLARIZATION RIB (REFERENCE)
- ALL DIMENSIONS EXCEPT (33), (34), (41) & (42) ARE COMMON TO BOTH SMALL AND LARGE POLARIZATION RIB TERMINALS
- REFERENCE PK-31300-516 FOR REEL DIRECTION
- REFERENCE AS-33012-002 FOR CRIMP INFORMATION



SEE SHEET 5
FOR M3 GRIP CODE
TERMINAL



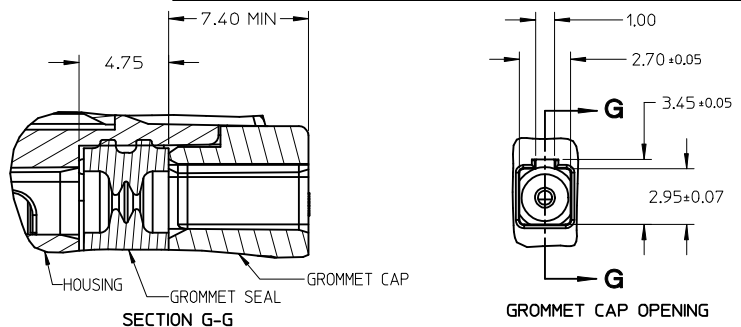
| | | | | | | | | | |
|--|--------------------------------------|---|---------|--|---------------------------------------|---|------------------------|---|--|
| ENTER DESCRIPTION EC NO: UAU2017-1076 DRW: NANKATESHSH/2017/05/29 CHK: A. DHIR 2017/05/29 APPR: T.JSMITH 2017/06/09 | QUALITY SYMBOLS ∇=0 ∇=0 ∇=0 | GENERAL TOLERANCES (UNLESS SPECIFIED) | | DIMENSION STYLE MM ONLY | | SCALE 4:1 | DESIGN UNITS METRIC | THIRD ANGLE PROJECTION | |
| | | 4 PLACES ± --- ± --- 3 PLACES ± --- ± --- 2 PLACES ± 0.10 ± --- 1 PLACE ± 0.3 ± --- 0 PLACE ± ± | mm INCH | DRAWN BY DATE L. PULLIAM 2005/06/21 | CHECKED BY DATE A. DHIR 2005/06/21 | APPROVED BY DATE B. MOSER 2005/06/22 | | TITLE MX150 RECEPTACLE TERMINAL | |
| DRAFT WHERE APPLICABLE MUST REMAIN WITHIN DIMENSIONS | | ANGULAR ± 3° | | MATERIAL NO. SEE TABLE | | DOCUMENT NO. SD-33012-002 | | SHEET NO. 1 OF 5 | |
| THIS DRAWING CONTAINS INFORMATION THAT IS PROPRIETARY TO MOLEX INCORPORATED AND SHOULD NOT BE USED WITHOUT WRITTEN PERMISSION | | | | | | | | | |

| FAMILY | GENDER | SEALING | PLATING | PART NUMBER | PAYOFF DIRECTION | GRIP CODE | WIRE SIZES* | A ±0.30 | B ±0.30 | C ±0.30 | D ±0.30 | SPECIAL CHARACTERISTICS |
|------------|------------|----------|--------------------------|-------------|------------------|--------------------------|--------------------------|------------|------------|--------------|---------------------|-------------------------|
| MX150 | RECEPTACLE | MAT SEAL | Sn | 33012-2001 | RIGHT (B) | 14 | 16/14AWG | 3.9 | 4.4 | 1.7 | 1.6 | HIGH PERFORMANCE Sn |
| | | | | 33012-3001 | LEFT (D) | | 1.50-2.00mm ² | | | | | |
| | | | | 33012-2002 | RIGHT (B) | 18 | 20/18AWG | 3.3 | 3.1 | 1.3 | 1.4 | |
| | | | | 33012-3002 | LEFT (D) | | 0.75-1.00mm ² | | | | | |
| | | | | 33012-2003 | RIGHT (B) | 22 | 22AWG | 2.5 | 2.6 | 0.9 | 1.0 | |
| | | | | 33012-3003 | LEFT (D) | | | | | | | |
| | | | 33012-2004 | RIGHT (B) | M3 | 0.35-0.50mm ² | 2.5 | 2.7 | 0.9 | 1.54 ±0.1 | | |
| | | | 33012-3004 | LEFT (D) | | | | | | | | |
| | | | 33001-2003 | RIGHT (B) | 14 | 16/14AWG | 3.9 | 4.4 | 1.7 | 1.6 | HIGH PERFORMANCE Au | |
| | | | 33001-3003 | LEFT (D) | | 1.50-2.00mm ² | | | | | | |
| | | | 33001-2004 | RIGHT (B) | 18 | 20/18AWG | 3.3 | 3.1 | 1.3 | 1.4 | | |
| | | | 33001-3004 | LEFT (D) | | 0.75-1.00mm ² | | | | | | |
| | | | 33001-2005 | RIGHT (B) | 22 | 22AWG | 2.5 | 2.6 | 0.9 | 1.0 | | |
| | | | 33001-3005 | LEFT (D) | | | | | | | | |
| | | | 33001-2006 | RIGHT (B) | M3 | 0.35-0.50mm ² | 2.5 | 2.7 | 0.9 | 1.54 ±0.1 | | |
| | | | 33001-3006 | LEFT (D) | | | | | | | | |
| | | | 33001-4001 | RIGHT (B) | 14 | 16/14AWG | 3.9 | 4.4 | 1.7 | 1.6 | HIGH PERFORMANCE Ag | |
| | | | 33001-5001 | LEFT (D) | | 1.50-2.00mm ² | | | | | | |
| 33001-4002 | RIGHT (B) | 18 | 20/18AWG | 3.3 | 3.1 | 1.3 | 1.4 | | | | | |
| 33001-5002 | LEFT (D) | | 0.75-1.00mm ² | | | | | | | | | |
| 33001-4003 | RIGHT (B) | 22 | 22AWG | 2.5 | 2.6 | 0.9 | 1.0 | | | | | |
| 33001-5003 | LEFT (D) | | | | | | | | | | | |
| 33001-4005 | RIGHT (B) | M3 | 0.35-0.50mm ² | 2.5 | 2.7 | 0.9 | 1.54 ±0.1 | | | | | |
| 33001-5005 | LEFT (D) | | | | | | | | | | | |

LARGE POLARIZATION RIB - NOT TO BE USED IN MX150 SEALED CONNECTORS

| FAMILY | GENDER | SEALING | PLATING | PART NUMBER | PAYOFF DIRECTION | GRIP CODE | WIRE SIZES* | A ±0.30 | B ±0.30 | C ±0.30 | D ±0.30 | SPECIAL CHARACTERISTICS |
|--------|------------|----------|------------|-------------|------------------|--------------------------|--------------------------|------------|------------|------------|---------------------|-------------------------|
| MX150 | RECEPTACLE | UNSEALED | Sn | 33012-2021 | RIGHT (B) | 14 | 16/14AWG | 3.9 | 4.4 | 1.7 | 1.6 | HIGH PERFORMANCE Sn |
| | | | | 33012-3021 | LEFT (D) | | 1.50-2.00mm ² | | | | | |
| | | | | 33012-2022 | RIGHT (B) | 18 | 20/18AWG | 3.3 | 3.1 | 1.3 | 1.4 | |
| | | | | 33012-3022 | LEFT (D) | | 0.75-1.00mm ² | | | | | |
| | | | | 33012-2023 | RIGHT (B) | 22 | 22AWG | 2.5 | 2.6 | 0.9 | 1.0 | |
| | | | | 33012-3023 | LEFT (D) | | 0.35-0.50mm ² | | | | | |
| | | | 33001-2021 | RIGHT (B) | 14 | 16/14AWG | 3.9 | 4.4 | 1.7 | 1.6 | HIGH PERFORMANCE Au | |
| | | | 33001-3021 | LEFT (D) | | 1.50-2.00mm ² | | | | | | |
| | | | 33001-2022 | RIGHT (B) | 18 | 20/18AWG | 3.3 | 3.1 | 1.3 | 1.4 | | |
| | | | 33001-3022 | LEFT (D) | | 0.75-1.00mm ² | | | | | | |
| | | | 33001-2023 | RIGHT (B) | 22 | 22AWG | 2.5 | 2.6 | 0.9 | 1.0 | | |
| | | | 33001-3023 | LEFT (D) | | 0.35-0.50mm ² | | | | | | |
| | | | 33001-4021 | RIGHT (B) | 14 | 16/14AWG | 3.9 | 4.4 | 1.7 | 1.6 | HIGH PERFORMANCE Ag | |
| | | | 33001-5021 | LEFT (D) | | 1.50-2.00mm ² | | | | | | |
| | | | 33001-4022 | RIGHT (B) | 18 | 20/18AWG | 3.3 | 3.1 | 1.3 | 1.4 | | |
| | | | 33001-5022 | LEFT (D) | | 0.75-1.00mm ² | | | | | | |
| | | | 33001-4023 | RIGHT (B) | 22 | 22AWG | 2.5 | 2.6 | 0.9 | 1.0 | | |
| | | | 33001-5023 | LEFT (D) | | 0.35-0.50mm ² | | | | | | |

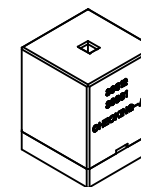
* REFERENCE AS-33012-002 FOR SPECIFIC WIRE TYPES



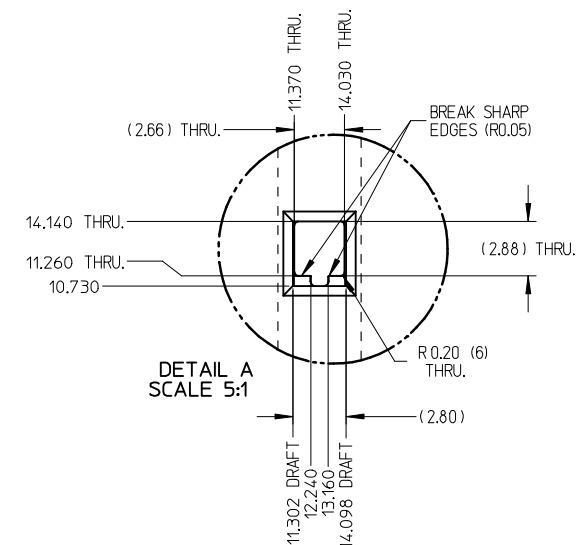
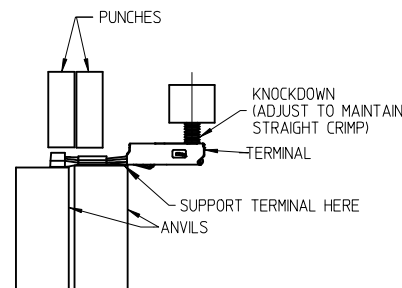
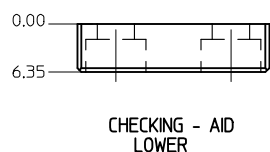
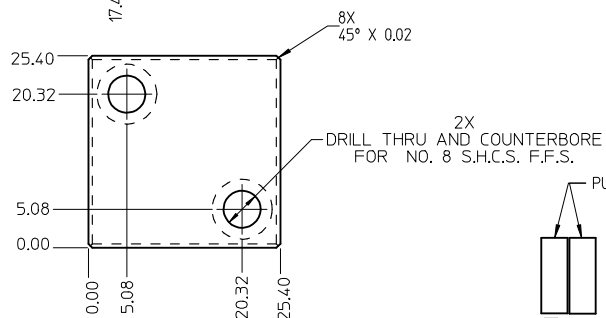
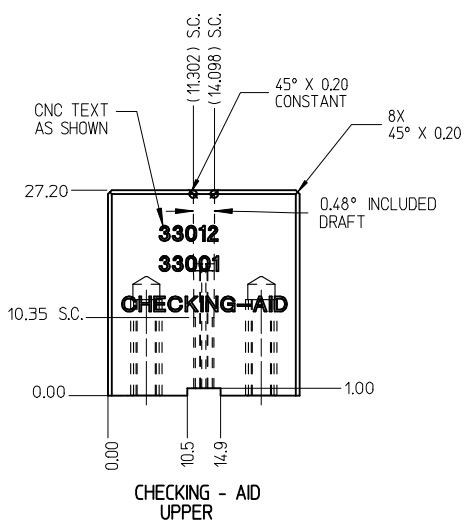
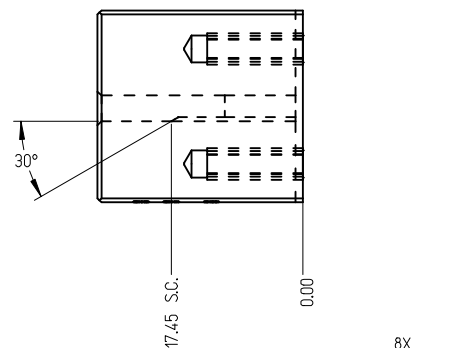
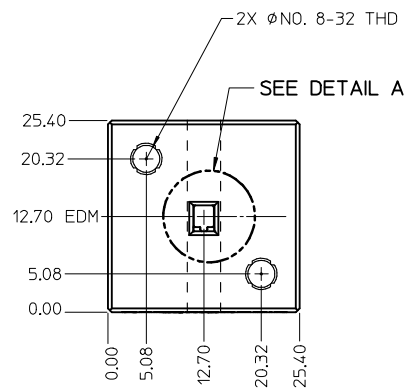
GROMMET SEAL / CAP CONFIGURATION TO MODIFY LARGE POLARIZATION RIB CAVITY TO ACCEPT SMALL POLARIZATION RIB APPLICATIONS

| | | | | | | | | | |
|--|--------------------------------------|---|----------------------|-----------------------------------|--------------------|------------------------------------|------------------------|------------------------|--|
| ENTER DESCRIPTION EC NO: JAU2017-1076 DRW:WENKATESHSH2017/05/29 CHK:DA. DHR 2017/05/29 APPR:JSMITH 2017/06/09 | QUALITY SYMBOLS ▽=0 ▽=0 ▽=0 | GENERAL TOLERANCES (UNLESS SPECIFIED) | | DIMENSION STYLE MM ONLY | | SCALE | DESIGN UNITS METRIC | THIRD ANGLE PROJECTION | |
| | | 4 PLACES ± --- ± --- | 3 PLACES ± --- ± --- | DRAWN BY L. PULLIAM | DATE 2005/06/21 | TITLE MX150 RECEPTACLE TERMINAL | | | |
| | | 2 PLACES ± 0.10 ± --- | 1 PLACE ± 0.3 ± --- | CHECKED BY A. DHR | DATE 2005/06/21 | APPROVED BY B. MOSER | | DATE 2005/06/22 | |
| | | 0 PLACE ± ± | ANGULAR ± 3 ° | MATERIAL NO. SEE TABLE | | DOCUMENT NO. SD-33012-002 | SHEET NO. 2 OF 5 | | |
| DRAFT WHERE APPLICABLE MUST REMAIN WITHIN DIMENSIONS | | THIS DRAWING CONTAINS INFORMATION THAT IS PROPRIETARY TO MOLEX INCORPORATED AND SHOULD NOT BE USED WITHOUT WRITTEN PERMISSION | | | | | | | |

THIS CHECKING - AID IS FOR SMALL POLARIZATION RIB TERMINALS ONLY



CHECKING - AID ASSEMBLY
SCALE 1:1

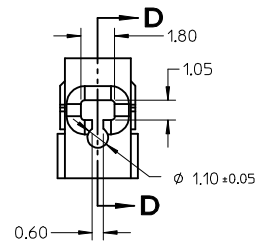
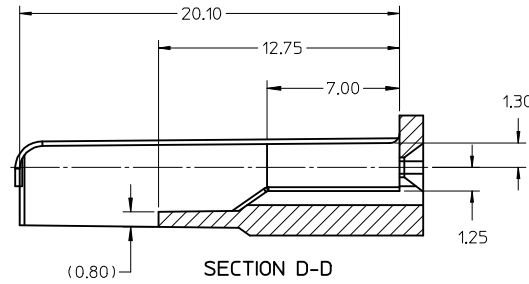
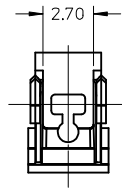


CRIMP REQUIREMENTS:

1. CRIMP STRAIGHTNESS MUST BE MAINTAINED
USE A KNOCKDOWN TOOL LOCATED AS SHOWN
TERMINAL BOX MUST NOT BE DEFORMED
2. AFTER CRIMPING, THE CRIMPED TERMINAL (AND UP TO 5 mm
OF WIRE PAST THE INSULATOR (CUTOFF TAB) MUST FIT FREELY
INTO THE CHECKING-AID SHOWN ON THIS PAGE
3. FOR OTHER MECHANICAL REQUIREMENTS ON CRIMPED
TERMINALS, REFER TO SAE/USCAR-21 (5-13-02)
SECTIONS 4.2 (VISUAL INSPECTION), 4.2 (CROSS SECTION
ANALYSIS) AND 4.4 (CONDUCTOR CRIMP PULLOUT FORCE)

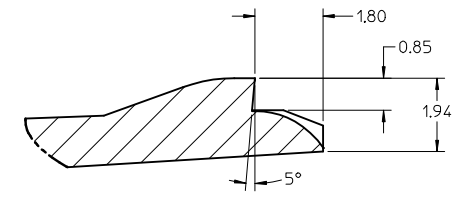
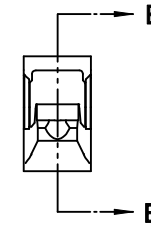
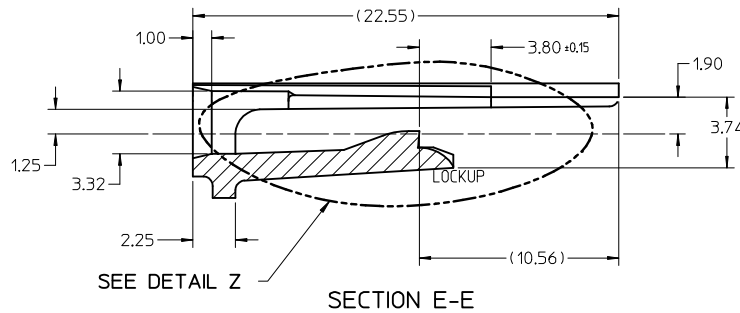
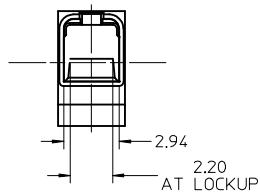
UPPER & LOWER
CHECKING-AID
A2 TOOL STEEL
HARDEN & GRIND
ROCKWELL "C" 56-58

| | | | | | | | | |
|---|--------------------------------------|---------------------------------------|----------------------|---|---------------------|---|-------------------------|--------------------|
| ENTER DESCRIPTION EC NO: UAU2017-1076 DRWN:WENKATESHSH2017/05/29 CHKD:A. DHIR 2017/05/29 APPR:T.JSMITH 2017/06/09 | QUALITY SYMBOLS ▽=0 ▽=0 ▽=0 | GENERAL TOLERANCES (UNLESS SPECIFIED) | | DIMENSION STYLE MM ONLY | SCALE 2:1 | DESIGN UNITS METRIC | THIRD ANGLE PROJECTION | |
| | | mm | INCH | DRAWN BY L. PULLIAM | DATE 2005/06/21 | TITLE MX150 RECEPTACLE TERMINAL | | |
| C1 | DESCRIPTION | 4 PLACES ± --- ± --- | 3 PLACES ± --- ± --- | 2 PLACES ± 0.10 ± --- | 1 PLACE ± 0.3 ± --- | 0 PLACE ± ± | APPROVED BY B. MOSER | DATE 2005/06/22 |
| | | ANGULAR ± 3 ° | | MATERIAL NO. SEE TABLE | | DOCUMENT NO. SD-33012-002 | | |
| DRAFT WHERE APPLICABLE MUST REMAIN WITHIN DIMENSIONS | | SIZE C | | THIS DRAWING CONTAINS INFORMATION THAT IS PROPRIETARY TO MOLEX. INCORPORATED AND SHOULD NOT BE USED WITHOUT WRITTEN PERMISSION | | | | |

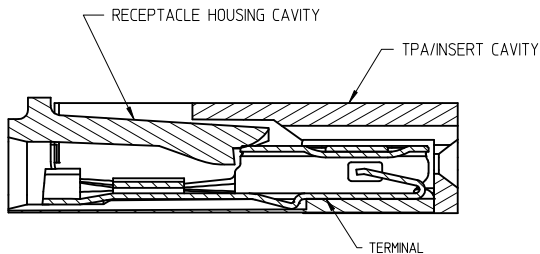


NOTES: UNLESS OTHERWISE SPECIFIED

1. TOLERANCES: LINEAR ± 0.10
ANGULAR $\pm 3^\circ$
2. ALL DRAFT WITHIN TOLERANCE.
3. MAX RADII ON ALL CORNERS SHOWN SHARP: 0.10
4. MAX FLASH PERMISSIBLE: 0.1
5. EJECTOR PIN MARKS PERMISSIBLE IF FLUSH TO 0.25 BELOW SURFACE.
6. MATERIAL: HOUSING/FINGER SPECIFICATION ENGINEERED FOR MATERIAL WITH THE FOLLOWING PROPERTIES:
A. FLEXURAL MODULUS = 4,500 TO 9,400 MPa
PER ASTM TEST D790
B. ELONGATION AT YIELD = 2.3% OR BETTER
PER ASTM TEST D638 TYPE V
7. CAVITY SPEC FOR USE ONLY WITH MOLEX RECEPTACLE
TERMINAL PART NUMBERS SPECIFIED ELSEWHERE ON THIS
DRAWING

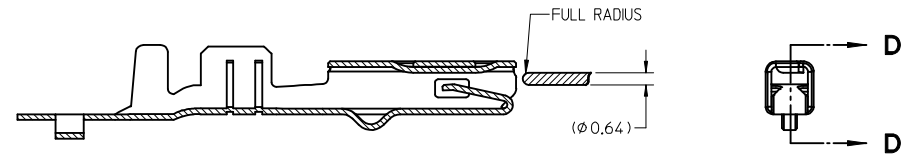
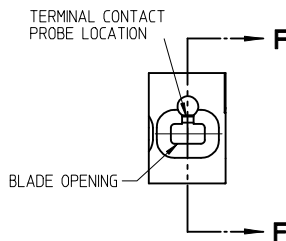


DETAIL Z
SCALE 20:1



SECTION F-F

RECEPTACLE CAVITY ASSEMBLED VIEWS
FOR SMALL POLARIZATION RIB APPLICATIONS
FIG. 1



SECTION D-D
FOR LARGE POLARIZATION RIB APPLICATIONS
FIG. 2

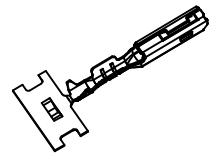
PROBING DOWN THE
THROAT MUST USE
THIS TERMINAL PROBE

FOR PROBING INFORMATION REFERENCE
MOLEX MX150 APPLICATION SPEC AS-33472-100

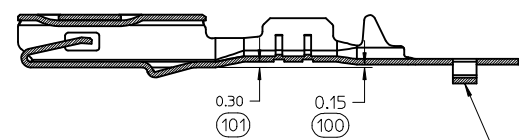
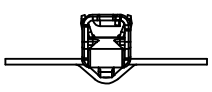
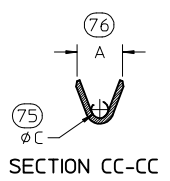
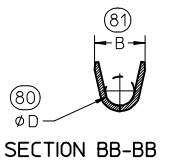
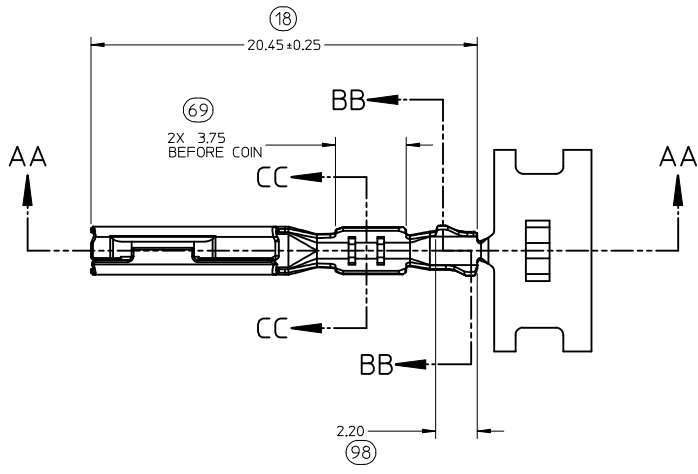
PREFERRED PROBING LOCATION
IS NOT ON SPRING MEMBER

IF ELECTRICAL CONTINUITY PROBE
TOUCHES SPRING MEMBER USE
PROBING AS SHOWN IN FIG. 2

| | | | | | | | | | |
|--|--------------------------------------|--|----------------------|----------------------------|---------------------|--------------|--|------------------------|---------------------------------------|
| ENTER DESCRIPTION EC NO: UAU2017-1076 DRAWN: VENKATESHSH/2017/05/29 CHKD: A. DHIR 2017/05/29 APPR: T.JSMITH 2017/06/09 | QUALITY SYMBOLS ▽=0 ▽=0 ▽=0 | GENERAL TOLERANCES (UNLESS SPECIFIED) | | DIMENSION STYLE MM ONLY | | SCALE 5:1 | DESIGN UNITS METRIC | THIRD ANGLE PROJECTION | |
| | | 4 PLACES ± --- ± --- | 3 PLACES ± --- ± --- | 2 PLACES ± 0.10 ± --- | 1 PLACE ± 0.3 ± --- | 0 PLACE ± ± | DRAWN BY DATE L. PULLIAM 2005/06/21 | | CHECKED BY DATE A. DHIR 2005/06/21 |
| C1 | DESCRIPTION | ANGULAR ± 3° | | MATERIAL NO. | | DOCUMENT NO. | | SHEET NO. | |
| | | DRAFT WHERE APPLICABLE MUST REMAIN WITHIN DIMENSIONS | | SEE TABLE | | SD-33012-002 | | 4 OF 5 | |
| THIS DRAWING CONTAINS INFORMATION THAT IS PROPRIETARY TO MOLEX INCORPORATED AND SHOULD NOT BE USED WITHOUT WRITTEN PERMISSION | | | | | | | | | |



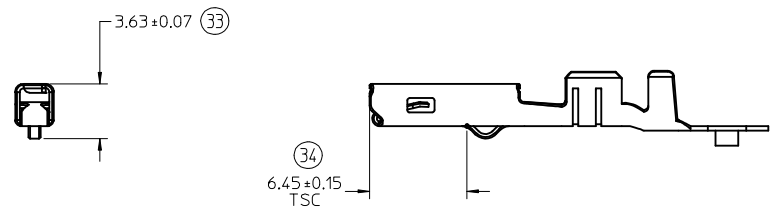
ISO VIEW
SCALE 2:1



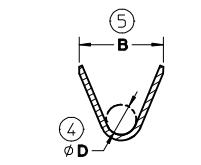
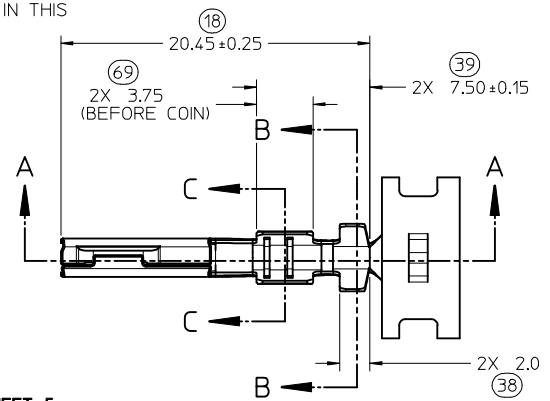
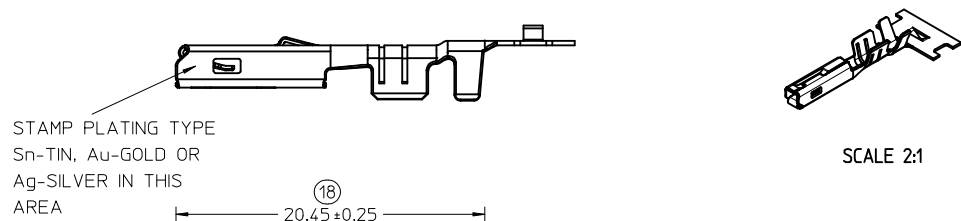
SECTION AA-AA
M3 GRIP CODE TERMINAL
SEE TABLE (SHEET 2) FOR PART NUMBERS

CARRIER BUMP DIRECTION
POINTS DOWN FOR TIN PLATED TERMINAL
POINTS UP FOR PRECIOUS METAL PLATED TERMINAL

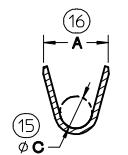
| | | | | | | | | | |
|--|--------------------------------------|---------------------------------------|----------------------|--|---------------------|-------------------------|------------------------|---|---------------------|
| ENTER DESCRIPTION EC NO: UAU2017-1076 DRW: N VENKATESH 2017/05/29 CHKD: A. DHIR 2017/05/29 APPR: T. SMITH 2017/06/09 | QUALITY SYMBOLS ▽=0 ▽=0 ▽=0 | GENERAL TOLERANCES (UNLESS SPECIFIED) | | DIMENSION STYLE MM ONLY | SCALE 5:1 | DESIGN UNITS METRIC | THIRD ANGLE PROJECTION | | |
| | | 4 PLACES ± --- ± --- | 3 PLACES ± --- ± --- | 2 PLACES ± 0.10 ± --- | 1 PLACE ± 0.3 ± --- | DRAWN BY L. PULLIAM | DATE 2005/06/21 | TITLE MX150 RECEPTACLE TERMINAL | |
| | | ANGULAR ± 3° | | DRAFT WHERE APPLICABLE MUST REMAIN WITHIN DIMENSIONS | | CHECKED BY A. DHIR | DATE 2005/06/21 | MOLEX INCORPORATED | |
| | | MATERIAL NO. SEE TABLE | | SIZE C | | APPROVED BY B. MOSER | DATE 2005/06/22 | DOCUMENT NO. SD-33012-002 | SHEET NO. 5 OF 5 |



DIMENSIONS FOR LARGE POLARIZATION RIB TERMINAL ONLY



SECTION B-B SCALE 5:1

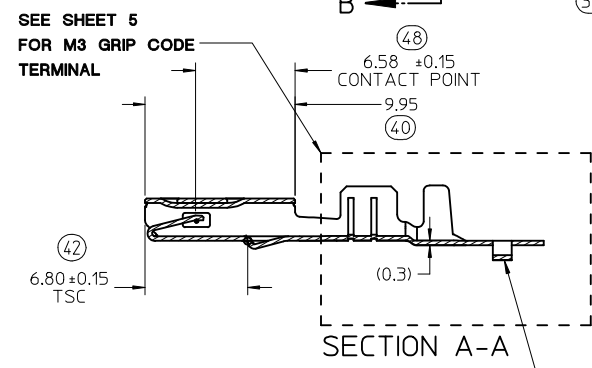
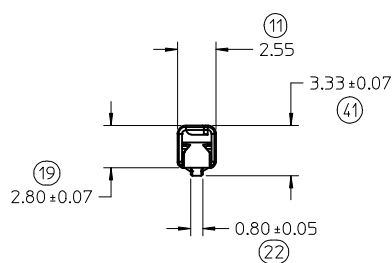


SECTION C-C SCALE 5:1

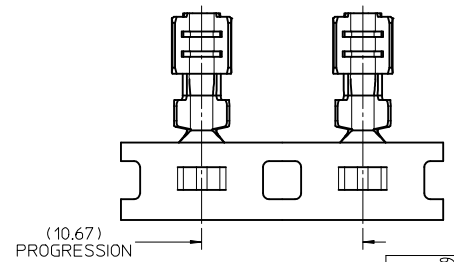
CARRIER BUMP DIRECTION
POINTS DOWN FOR TIN PLATED TERMINALS
POINTS UP FOR PRECIOUS PLATED TERMINALS

NOTES: (UNLESS OTHERWISE SPECIFIED)

1. MATING TERMINAL SHOWN ON SD-33000-001
2. MATERIAL: ASTM B422, UNS C19025, HR04
THICKNESS: 0.30 mm +0.01
TEMPER: FULL HARD (REF)
TENSILE: 496 MIN MPA
3. TIN PLATED TERMINAL FINISH:
OVERALL UNDERPLATE ELECTRODEPOSITED NICKEL
OVERALL ELECTRODEPOSITED REFLOW TIN
4. GOLD PLATED TERMINAL FINISH:
OVERALL UNDERPLATE ELECTRODEPOSITED DUCTILE SULFAMATE NICKEL
CONTACT AREA - ELECTRODEPOSITED GOLD
GRIP AREA - ELECTRODEPOSITED 100% TIN MATTE FINISH
5. SILVER PLATED TERMINAL FINISH:
OVERALL UNDERPLATE ELECTRODEPOSITED DUCTILE SULFAMATE NICKEL
CONTACT AREA - ELECTRODEPOSITED PURE SILVER (0.5% MAX IMPURITIES) SEMI-BRIGHT FINISH
- SILVER ANTI-TARNISH : EVABRITE
GRIP AREA - ELECTRODEPOSITED 100% TIN MATTE FINISH
6. MEETS PERFORMANCE SPECIFICATION FOR CABLE TO TERMINAL ELECTRICAL CRIMPS PER SAE/USCAR-21 (8/2001)
7. MEETS PERFORMANCE STANDARD FOR AUTOMOTIVE ELECTRICAL CONNECTOR SYSTEMS FOR SAE/USCAR-2, REV. 4 (TEMP CLASS 3) (5/2004)
8. MEETS ELECTRICAL CONNECTION SYSTEM DESIGN SPECIFICATION (SDS) REV.11 (5/2002)
9. MEETS FIELD CORRELATED LIFE TEST (FCLT) PER SAE/USCAR-20 (6/2004)
10. MEETS WIRING COMPONENT DESIGN GUIDELINES SAE/USCAR-12 REV 2 (12/2001)
11. TSC ON A DIMENSION TO BE INTERPRETED AS DISTANCE TO A THEORETICAL SHARP CORNER AS IF THE RADIUS WERE NOT PRESENT
12. REFERENCE 97BG-14474-AAB FOR LARGE POLARIZATION RIB CAVITY SPECIFICATION
13. INSERTION FORCE (TINI) AVG. FROM PV TESTING -
3.8N LARGE POLARIZATION RIB
3.5N SMALL POLARIZATION RIB (REFERENCE)
14. ALL DIMENSIONS EXCEPT (33), (34), (41) & (42) ARE COMMON TO BOTH SMALL AND LARGE POLARIZATION RIB TERMINALS
15. REFERENCE PK-31300-516 FOR REEL DIRECTION
16. REFERENCE AS-33012-002 FOR CRIMP INFORMATION



SEE SHEET 5
FOR M3 GRIP CODE
TERMINAL



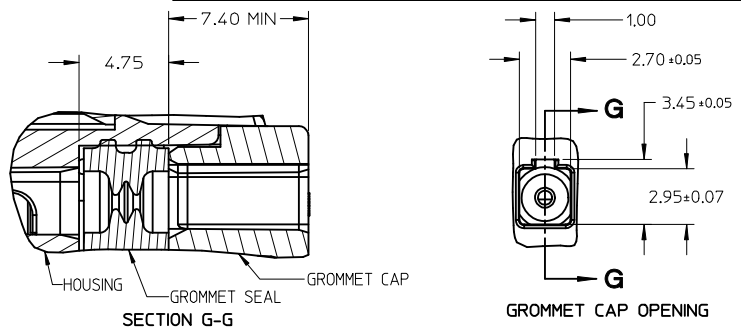
| | | | | | | | | | |
|---|--------------------------------------|---|---------|--|---------------------------------------|---|------------------------|---|--|
| ENTER DESCRIPTION EC NO: UAU2017-1076 DRW: NANKATESHSH/2017/05/29 CHK: D.A., DHIR 2017/05/29 APPR: T.JSM/TH 2017/06/09 | QUALITY SYMBOLS ∇=0 ∇=0 ∇=0 | GENERAL TOLERANCES (UNLESS SPECIFIED) | | DIMENSION STYLE MM ONLY | | SCALE 4:1 | DESIGN UNITS METRIC | THIRD ANGLE PROJECTION | |
| | | 4 PLACES ± --- ± --- 3 PLACES ± --- ± --- 2 PLACES ± 0.10 ± --- 1 PLACE ± 0.3 ± --- 0 PLACE ± ± | mm INCH | DRAWN BY DATE L. PULLIAM 2005/06/21 | CHECKED BY DATE A. DHIR 2005/06/21 | APPROVED BY DATE B. MOSER 2005/06/22 | | TITLE MX150 RECEPTACLE TERMINAL | |
| DRAFT WHERE APPLICABLE MUST REMAIN WITHIN DIMENSIONS | | ANGULAR ± 3 ° | | MATERIAL NO. SEE TABLE | | DOCUMENT NO. SD-33012-002 | | SHEET NO. 1 OF 5 | |
| THIS DRAWING CONTAINS INFORMATION THAT IS PROPRIETARY TO MOLEX INCORPORATED AND SHOULD NOT BE USED WITHOUT WRITTEN PERMISSION | | | | | | | | | |

| FAMILY | GENDER | SEALING | PLATING | PART NUMBER | PAYOFF DIRECTION | GRIP CODE | WIRE SIZES* | A ±0.30 | B ±0.30 | C ±0.30 | D ±0.30 | SPECIAL CHARACTERISTICS |
|------------|------------|----------|--------------------------|-------------|------------------|--------------------------|--------------------------|------------|------------|--------------|---------------------|-------------------------|
| MX150 | RECEPTACLE | MAT SEAL | Sn | 33012-2001 | RIGHT (B) | 14 | 16/14AWG | 3.9 | 4.4 | 1.7 | 1.6 | HIGH PERFORMANCE Sn |
| | | | | 33012-3001 | LEFT (D) | | 1.50-2.00mm ² | | | | | |
| | | | | 33012-2002 | RIGHT (B) | 18 | 20/18AWG | 3.3 | 3.1 | 1.3 | 1.4 | |
| | | | | 33012-3002 | LEFT (D) | | 0.75-1.00mm ² | | | | | |
| | | | | 33012-2003 | RIGHT (B) | 22 | 22AWG | 2.5 | 2.6 | 0.9 | 1.0 | |
| | | | | 33012-3003 | LEFT (D) | | | | | | | |
| | | | 33012-2004 | RIGHT (B) | M3 | 0.35-0.50mm ² | 2.5 | 2.7 | 0.9 | 1.54 ±0.1 | | |
| | | | 33012-3004 | LEFT (D) | | | | | | | | |
| | | | 33001-2003 | RIGHT (B) | 14 | 16/14AWG | 3.9 | 4.4 | 1.7 | 1.6 | HIGH PERFORMANCE Au | |
| | | | 33001-3003 | LEFT (D) | | 1.50-2.00mm ² | | | | | | |
| | | | 33001-2004 | RIGHT (B) | 18 | 20/18AWG | 3.3 | 3.1 | 1.3 | 1.4 | | |
| | | | 33001-3004 | LEFT (D) | | 0.75-1.00mm ² | | | | | | |
| | | | 33001-2005 | RIGHT (B) | 22 | 22AWG | 2.5 | 2.6 | 0.9 | 1.0 | | |
| | | | 33001-3005 | LEFT (D) | | | | | | | | |
| | | | 33001-2006 | RIGHT (B) | M3 | 0.35-0.50mm ² | 2.5 | 2.7 | 0.9 | 1.54 ±0.1 | | |
| | | | 33001-3006 | LEFT (D) | | | | | | | | |
| | | | 33001-4001 | RIGHT (B) | 14 | 16/14AWG | 3.9 | 4.4 | 1.7 | 1.6 | HIGH PERFORMANCE Ag | |
| | | | 33001-5001 | LEFT (D) | | 1.50-2.00mm ² | | | | | | |
| 33001-4002 | RIGHT (B) | 18 | 20/18AWG | 3.3 | 3.1 | 1.3 | 1.4 | | | | | |
| 33001-5002 | LEFT (D) | | 0.75-1.00mm ² | | | | | | | | | |
| 33001-4003 | RIGHT (B) | 22 | 22AWG | 2.5 | 2.6 | 0.9 | 1.0 | | | | | |
| 33001-5003 | LEFT (D) | | | | | | | | | | | |
| 33001-4005 | RIGHT (B) | M3 | 0.35-0.50mm ² | 2.5 | 2.7 | 0.9 | 1.54 ±0.1 | | | | | |
| 33001-5005 | LEFT (D) | | | | | | | | | | | |

LARGE POLARIZATION RIB - NOT TO BE USED IN MX150 SEALED CONNECTORS

| FAMILY | GENDER | SEALING | PLATING | PART NUMBER | PAYOFF DIRECTION | GRIP CODE | WIRE SIZES* | A ±0.30 | B ±0.30 | C ±0.30 | D ±0.30 | SPECIAL CHARACTERISTICS |
|--------|------------|----------|------------|-------------|------------------|--------------------------|--------------------------|------------|------------|------------|---------------------|-------------------------|
| MX150 | RECEPTACLE | UNSEALED | Sn | 33012-2021 | RIGHT (B) | 14 | 16/14AWG | 3.9 | 4.4 | 1.7 | 1.6 | HIGH PERFORMANCE Sn |
| | | | | 33012-3021 | LEFT (D) | | 1.50-2.00mm ² | | | | | |
| | | | | 33012-2022 | RIGHT (B) | 18 | 20/18AWG | 3.3 | 3.1 | 1.3 | 1.4 | |
| | | | | 33012-3022 | LEFT (D) | | 0.75-1.00mm ² | | | | | |
| | | | | 33012-2023 | RIGHT (B) | 22 | 22AWG | 2.5 | 2.6 | 0.9 | 1.0 | |
| | | | | 33012-3023 | LEFT (D) | | 0.35-0.50mm ² | | | | | |
| | | | 33001-2021 | RIGHT (B) | 14 | 16/14AWG | 3.9 | 4.4 | 1.7 | 1.6 | HIGH PERFORMANCE Au | |
| | | | 33001-3021 | LEFT (D) | | 1.50-2.00mm ² | | | | | | |
| | | | 33001-2022 | RIGHT (B) | 18 | 20/18AWG | 3.3 | 3.1 | 1.3 | 1.4 | | |
| | | | 33001-3022 | LEFT (D) | | 0.75-1.00mm ² | | | | | | |
| | | | 33001-2023 | RIGHT (B) | 22 | 22AWG | 2.5 | 2.6 | 0.9 | 1.0 | | |
| | | | 33001-3023 | LEFT (D) | | 0.35-0.50mm ² | | | | | | |
| | | | 33001-4021 | RIGHT (B) | 14 | 16/14AWG | 3.9 | 4.4 | 1.7 | 1.6 | HIGH PERFORMANCE Ag | |
| | | | 33001-5021 | LEFT (D) | | 1.50-2.00mm ² | | | | | | |
| | | | 33001-4022 | RIGHT (B) | 18 | 20/18AWG | 3.3 | 3.1 | 1.3 | 1.4 | | |
| | | | 33001-5022 | LEFT (D) | | 0.75-1.00mm ² | | | | | | |
| | | | 33001-4023 | RIGHT (B) | 22 | 22AWG | 2.5 | 2.6 | 0.9 | 1.0 | | |
| | | | 33001-5023 | LEFT (D) | | 0.35-0.50mm ² | | | | | | |

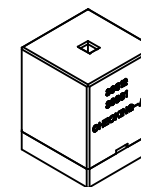
* REFERENCE AS-33012-002 FOR SPECIFIC WIRE TYPES



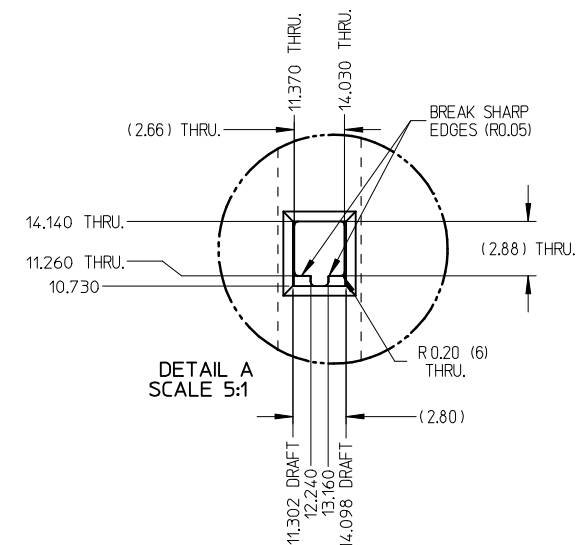
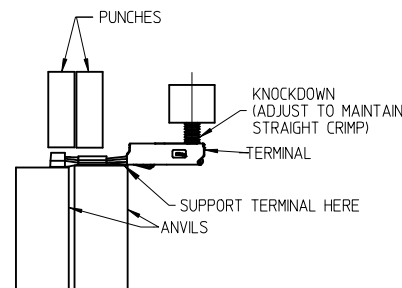
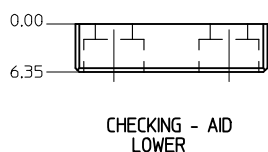
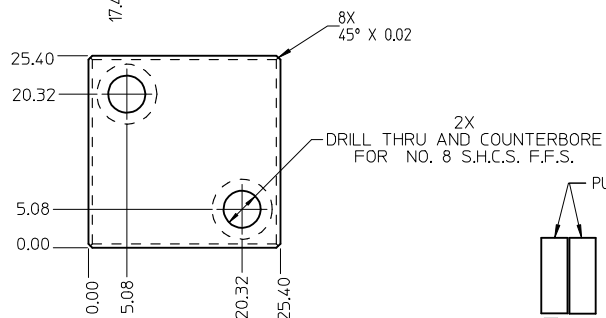
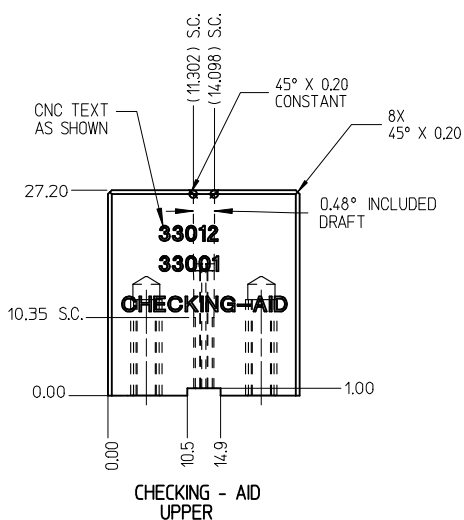
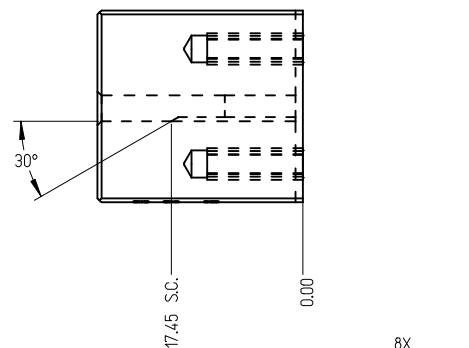
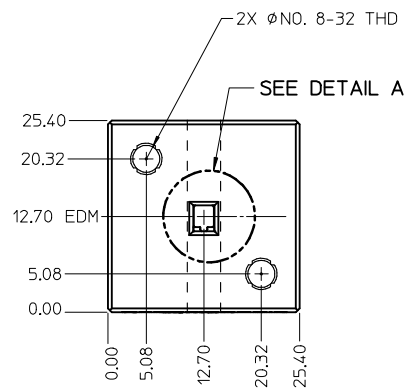
GROMMET SEAL / CAP CONFIGURATION TO MODIFY LARGE POLARIZATION RIB CAVITY TO ACCEPT SMALL POLARIZATION RIB APPLICATIONS

| | | | | | | | | | | |
|---|---|---|---|-----------------------------------|--------------------|---|------------------------|------------------------------|--|---------------------|
| ENTER DESCRIPTION EC NO: JAU2017-1076 DRWINGENKATESHSHT2017/05/29 CHKDA: DHR 2017/05/29 APPR: TSMITH 2017/06/09 REV: C1 | QUALITY SYMBOLS ▽=0 ▽=0 ▽=0 | GENERAL TOLERANCES (UNLESS SPECIFIED) | | DIMENSION STYLE MM ONLY | | SCALE METRIC | DESIGN UNITS METRIC | THIRD ANGLE PROJECTION | | |
| | | 4 PLACES ± --- ± --- 3 PLACES ± --- ± --- 2 PLACES ± 0.10 ± --- 1 PLACE ± 0.3 ± --- 0 PLACE ± ± | mm INCH ± --- ± --- ± --- ± --- ± --- ± --- ± ± | DRAWN BY L. PULLIAM | DATE 2005/06/21 | TITLE MX150 RECEPTACLE TERMINAL | | | | |
| | | APPROVED BY B. MOSER | | DATE 2005/06/22 | | MATERIAL NO. SEE TABLE | | DOCUMENT NO. SD-33012-002 | | SHEET NO. 2 OF 5 |
| | | DRAFT WHERE APPLICABLE MUST REMAIN WITHIN DIMENSIONS | | ANGULAR ± 3 ° | | THIS DRAWING CONTAINS INFORMATION THAT IS PROPRIETARY TO MOLEX INCORPORATED AND SHOULD NOT BE USED WITHOUT WRITTEN PERMISSION | | | | |

THIS CHECKING - AID IS FOR SMALL POLARIZATION RIB TERMINALS ONLY



CHECKING - AID ASSEMBLY
SCALE 1:1

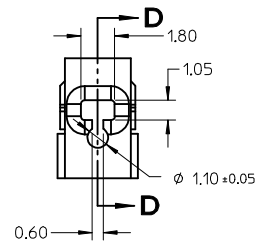
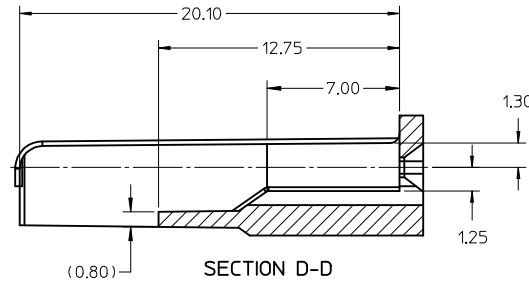
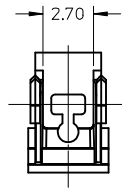


CRIMP REQUIREMENTS:

1. CRIMP STRAIGHTNESS MUST BE MAINTAINED USE A KNOCKDOWN TOOL LOCATED AS SHOWN TERMINAL BOX MUST NOT BE DEFORMED
2. AFTER CRIMPING, THE CRIMPED TERMINAL (AND UP TO 5 mm OF WIRE PAST THE INSULATOR (CUTOFF TAB) MUST FIT FREELY INTO THE CHECKING-AID SHOWN ON THIS PAGE
3. FOR OTHER MECHANICAL REQUIREMENTS ON CRIMPED TERMINALS, REFER TO SAE/USCAR-21 (5-13-02) SECTIONS 4.2 (VISUAL INSPECTION), 4.2 (CROSS SECTION ANALYSIS) AND 4.4 (CONDUCTOR CRIMP PULLOUT FORCE)

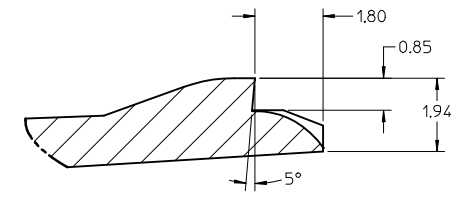
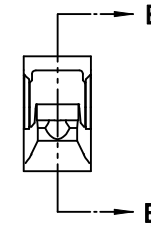
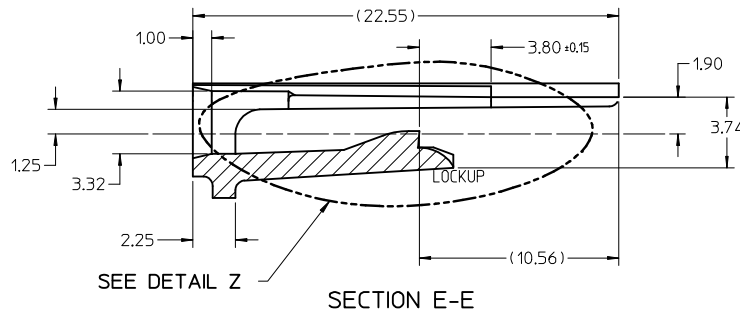
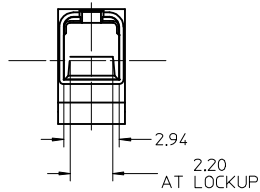
UPPER & LOWER
CHECKING-AID
A2 TOOL STEEL
HARDEN & GRIND
ROCKWELL "C" 56-58

| | | | | | | | |
|--|----------------------------------|--|---------|--|---------------------------------------|---|------------------------|
| ENTER DESCRIPTION EC NO: UAU2017-1076 DRWN:WENKATESHSH2017/05/29 CHKD:A. DHIR 2017/05/29 APPR:T.JSMITH 2017/06/09 | QUALITY SYMBOLS | GENERAL TOLERANCES (UNLESS SPECIFIED) | | DIMENSION STYLE MM ONLY | SCALE 2:1 | DESIGN UNITS METRIC | THIRD ANGLE PROJECTION |
| | | 4 PLACES ± --- ± --- 3 PLACES ± --- ± --- 2 PLACES ± 0.10 ± --- 1 PLACE ± 0.3 ± --- 0 PLACE ± ± | mm INCH | DRAWN BY DATE L. PULLIAM 2005/06/21 | CHECKED BY DATE A. DHIR 2005/06/21 | MX150 RECEPTACLE TERMINAL molex DOCUMENT NO. SD-33012-002 SHEET NO. 3 OF 5 | |
| ANGULAR ± 3° DRAFT WHERE APPLICABLE MUST REMAIN WITHIN DIMENSIONS | MATERIAL NO. SEE TABLE | THIS DRAWING CONTAINS INFORMATION THAT IS PROPRIETARY TO MOLEX. INCORPORATED AND SHOULD NOT BE USED WITHOUT WRITTEN PERMISSION | | | | | |

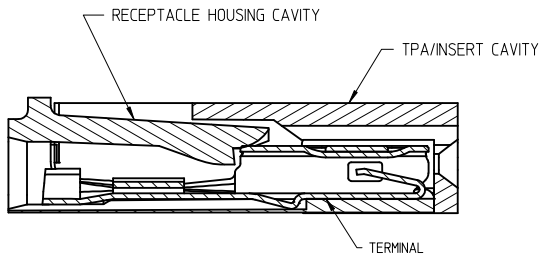


NOTES: UNLESS OTHERWISE SPECIFIED

1. TOLERANCES: LINEAR ± 0.10
ANGULAR $\pm 3^\circ$
2. ALL DRAFT WITHIN TOLERANCE.
3. MAX RADII ON ALL CORNERS SHOWN SHARP: 0.10
4. MAX FLASH PERMISSIBLE: 0.1
5. EJECTOR PIN MARKS PERMISSIBLE IF FLUSH TO 0.25 BELOW SURFACE.
6. MATERIAL: HOUSING/FINGER SPECIFICATION ENGINEERED FOR MATERIAL WITH THE FOLLOWING PROPERTIES:
A. FLEXURAL MODULUS = 4,500 TO 9,400 MPa
PER ASTM TEST D790
B. ELONGATION AT YIELD = 2.3% OR BETTER
PER ASTM TEST D638 TYPE V
7. CAVITY SPEC FOR USE ONLY WITH MOLEX RECEPTACLE
TERMINAL PART NUMBERS SPECIFIED ELSEWHERE ON THIS
DRAWING

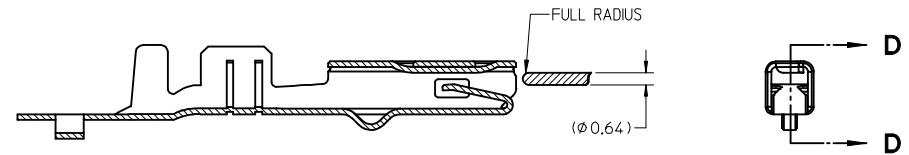
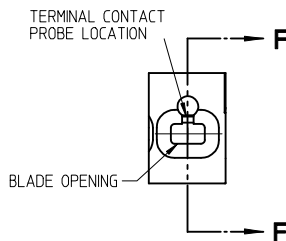


DETAIL Z
SCALE 20:1



SECTION F-F

RECEPTACLE CAVITY ASSEMBLED VIEWS
FOR SMALL POLARIZATION RIB APPLICATIONS
FIG. 1



SECTION D-D
FOR LARGE POLARIZATION RIB APPLICATIONS
FIG. 2

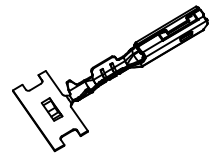
PROBING DOWN THE
THROAT MUST USE
THIS TERMINAL PROBE

FOR PROBING INFORMATION REFERENCE
MOLEX MX150 APPLICATION SPEC AS-33472-100

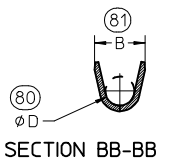
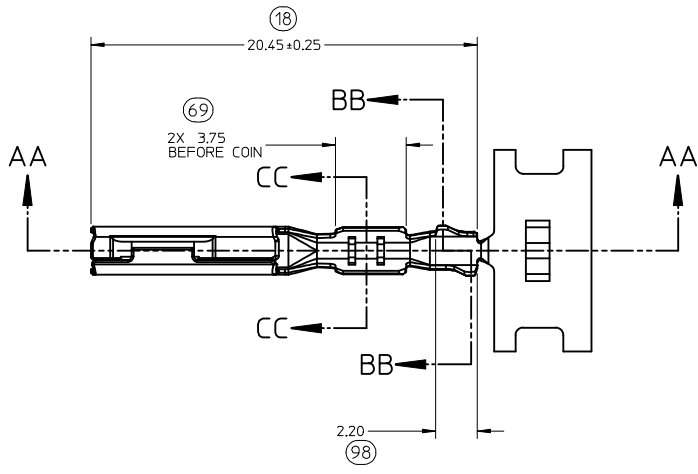
PREFERRED PROBING LOCATION
IS NOT ON SPRING MEMBER

IF ELECTRICAL CONTINUITY PROBE
TOUCHES SPRING MEMBER USE
PROBING AS SHOWN IN FIG. 2

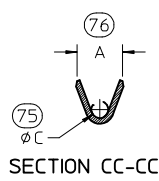
| | | | | | | | | | |
|---|--------------------------------------|--|----------------------|----------------------------|---------------------|--------------|--|------------------------|---------------------------------------|
| ENTER DESCRIPTION EC NO: UAU2017-1076 DRAWN: VENKATESHSH/2017/05/29 CHKD: A. DHIR 2017/05/29 APPR: T. J. SMITH 2017/06/09 | QUALITY SYMBOLS ▽=0 ▽=0 ▽=0 | GENERAL TOLERANCES (UNLESS SPECIFIED) | | DIMENSION STYLE MM ONLY | | SCALE 5:1 | DESIGN UNITS METRIC | THIRD ANGLE PROJECTION | |
| | | 4 PLACES ± --- ± --- | 3 PLACES ± --- ± --- | 2 PLACES ± 0.10 ± --- | 1 PLACE ± 0.3 ± --- | 0 PLACE ± ± | DRAWN BY DATE L. PULLIAM 2005/06/21 | | CHECKED BY DATE A. DHIR 2005/06/21 |
| C1 | DESCRIPTION | ANGULAR ± 3° | | MATERIAL NO. | | DOCUMENT NO. | | SHEET NO. | |
| | | DRAFT WHERE APPLICABLE MUST REMAIN WITHIN DIMENSIONS | | SEE TABLE | | SD-33012-002 | | 4 OF 5 | |
| THIS DRAWING CONTAINS INFORMATION THAT IS PROPRIETARY TO MOLEX INCORPORATED AND SHOULD NOT BE USED WITHOUT WRITTEN PERMISSION | | | | | | | | | |



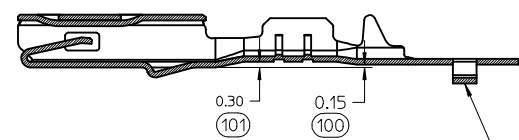
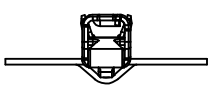
ISO VIEW
SCALE 2:1



SECTION BB-BB



SECTION CC-CC



SECTION AA-AA
M3 GRIP CODE TERMINAL
SEE TABLE (SHEET 2) FOR PART NUMBERS

CARRIER BUMP DIRECTION
POINTS DOWN FOR TIN PLATED TERMINAL
POINTS UP FOR PRECIOUS METAL PLATED TERMINAL

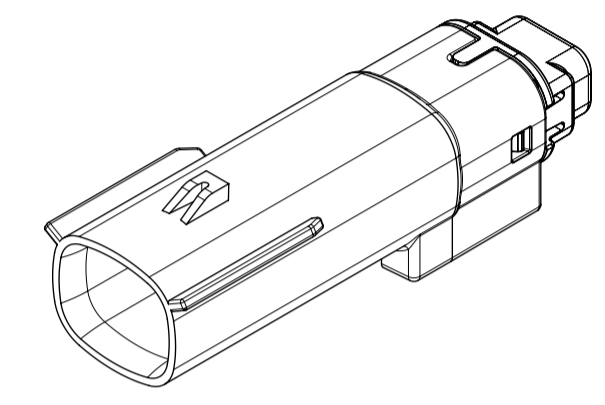
| | | | | | | | | | |
|--|--------------------------------------|--|---------|-----------------------------------|---------------------|---|-------------------------------------|----------------------------|--|
| ENTER DESCRIPTION EC NO: UAU2017-1076 DRW: N VENKATESH 2017/05/29 CHK: A. DHIR 2017/05/29 APPR: T. SMITH 2017/06/09 | QUALITY SYMBOLS ▽=0 ▽=0 ▽=0 | GENERAL TOLERANCES (UNLESS SPECIFIED) | | DIMENSION STYLE MM ONLY | SCALE 5:1 | DESIGN UNITS METRIC | THIRD ANGLE PROJECTION | | |
| | | 4 PLACES ± --- ± --- 3 PLACES ± --- ± --- 2 PLACES ± 0.10 ± --- 1 PLACE ± 0.3 ± --- | mm INCH | DRAWN BY L. PULLIAM | DATE 2005/06/21 | TITLE MX150 RECEPTACLE TERMINAL | | | |
| | | ANGULAR ± 3° | | CHECKED BY A. DHIR | DATE 2005/06/21 | MOLEX INCORPORATED | | | |
| | | DRAFT WHERE APPLICABLE MUST REMAIN WITHIN DIMENSIONS | | APPROVED BY B. MOSER | DATE 2005/06/22 | MATERIAL NO. SEE TABLE | DOCUMENT NO. SD-33012-002 | SHEET NO. 5 OF 5 | |

| TABLE OF CONTENTS | |
|-------------------|--------------------------|
| SHEET NO. | SHEET DESCRIPTION |
| 1 | NOTES AND BOM |
| 2 | CONFIGURATIONS |
| 3-4 | KEY CONFIGURATIONS |
| 5 | BLADE SEALED ASSEMBLY |
| 6 | SYSTEM PACKAGING |
| 7 | BACKSHELL NOTES |
| 8 | BACKSHELL |
| 9 | BACKSHELL CONFIGURATIONS |

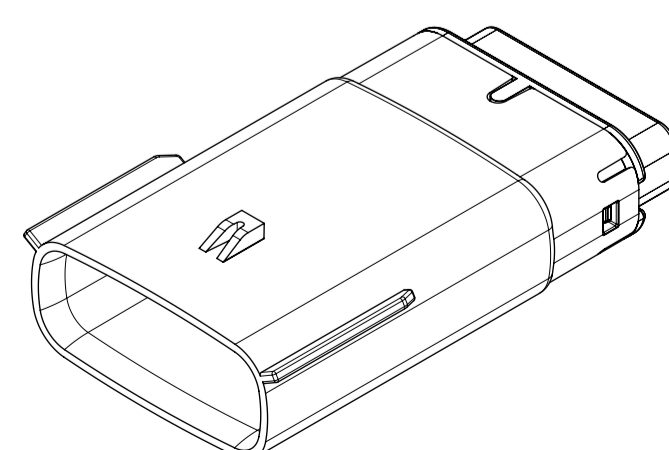
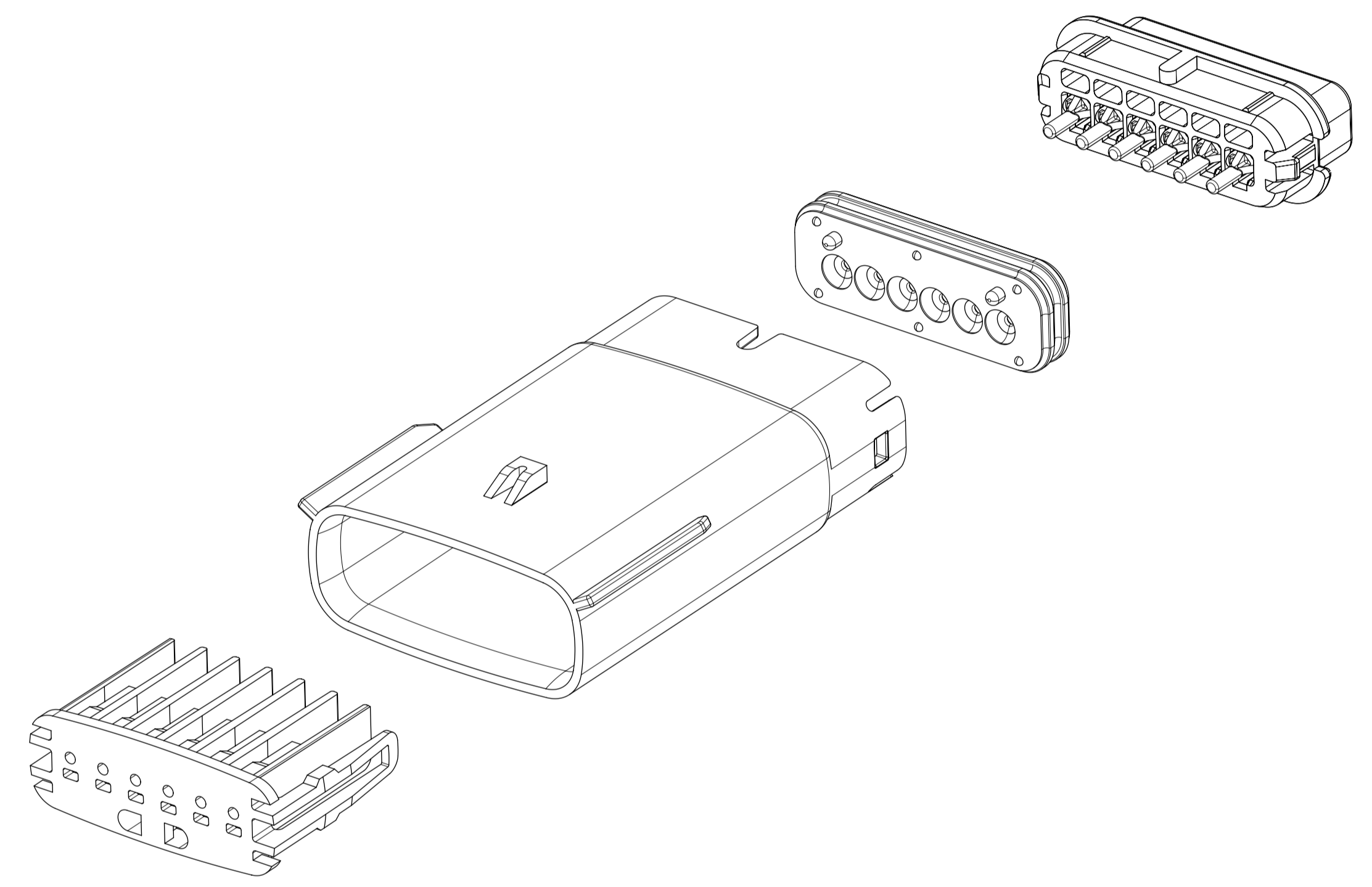
NOTES: VALID UNLESS OTHERWISE SPECIFIED

1. GENERAL:
- a. APPLICATION SPECIFICATION SEE: AS-33472-100
- CONTAINS: PRODUCT INTRODUCTION, PRODUCT SUMMARY, CONNECTOR ASSEMBLY, PACKAGING INFORMATION, CONNECTOR MATING, SERVICE INSTRUCTIONS, ELECTRICAL CONTINUITY CHECKING, CRIMPING, AND TROUBLESHOOTING.
 - DESIGNED TO MATE WITH RECEPTACLE SEALED ASSEMBLY AS SPECIFIED IN THE MATING CONNECTOR DRAWINGS CHART.
 - *DENOTES DRAWINGS THAT CAN BE ACCESSED AT <http://ewcap.uscarteams.org/>
 - ASSEMBLY SHIPPED WITH PLR IN PRE-LOCK POSITION (SEE PLR PRE-LOCK VIEW SHEET 5).
- b. PRODUCT SPECIFICATION SEE:
- STANDARD CONFIGURATION: PS-33471-000
 - UL V0 CONFIGURATION: PS-160105-0001
 - CONTAINS: PRODUCT INTRODUCTION, PRODUCT SUMMARY, RATINGS (CURRENT, TEMPERATURE, SEALING, AND FLAMMABILITY), TERMINALS, WIRE DIAMETER RANGE, PRODUCT VALIDATION, AND PRODUCT DEVIATIONS.
- c. PACKAGING SPECIFICATION PER MOLEX DRAWING: PK-31300-635 (PK-33471-000 FOR 1X5)
- d. PARTS MUST BE IN COMPLIANCE TO MOLEX CHEMICAL SUBSTANCES FOR PRODUCTS AND PACKAGING SPECIFICATION: QEHS-699000-300
- e. DATA MUST BE SUBMITTED UNDER THE MOLEX PART NUMBER TO IMDS (COMPANY ID#13255)
2. DESIGN - MATERIALS:
- a. FOR BILL OF MATERIALS SEE:
- STANDARD CONFIGURATION: SD-33481-0002
 - UL V0 CONFIGURATION: SD-160106-0002
3. DESIGN - GEOMETRY:
- a. THE 3-D CAD DATA IS BASIC (WITHOUT TOLERANCE) AND MASTER FOR THIS PART WITH THE EXCEPTION OF UNDERLINED DIMENSIONS. DIMENSIONAL INFORMATION NOT SHOWN ON THIS DRAWING IS DEFINED BY THE DATA FILE AT ITS LATEST REVISION.
- b. GEOMETRIC DIMENSIONS AND TOLERANCES PER ASME Y14.5M-2009
- c. EDGES AND UNDIMENSIONED DETAILS PER ISO13715
- d. CORNERS SHOWN AS SHARP TO BE R 0.2 MAX.
- e. LETTERING SHALL BE 0.15 MAX RAISED IN 0.25 MAX RECESS PAD. THIS INCLUDES RECYCLING CODE, CAVITY ID, VENDOR IDENTIFICATION, AND CUSTOMER MATERIAL NUMBER.
- f. VISUAL DEFECTS SHALL MEET COSMETIC STANDARD PS-45499-002 (Class B).
- g. LASER MARKING:
1. PART NUMBER
 2. DAY OF THE YEAR
 3. SHIFT
 4. YEAR
- FOR ADDITIONAL INFORMATION SEE SECTION 5 UNDER PROCEDURES IN ES-34735-008.

| MATING CONNECTOR DRAWINGS | |
|---------------------------|---------------|
| DESCRIPTION | MOLEX INLINE |
| 1X2 | SD-33471-0001 |
| | |
| | |
| 1X6 | SD-33471-0001 |



1X2

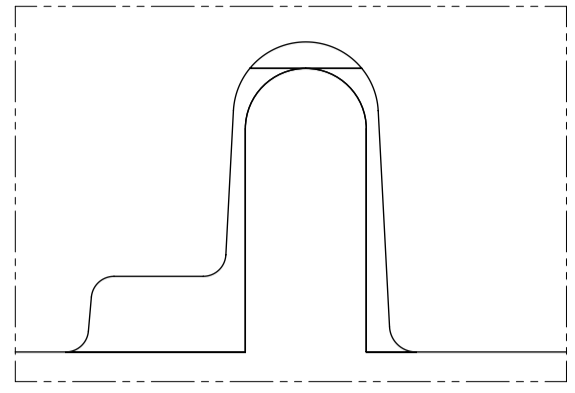


1X6

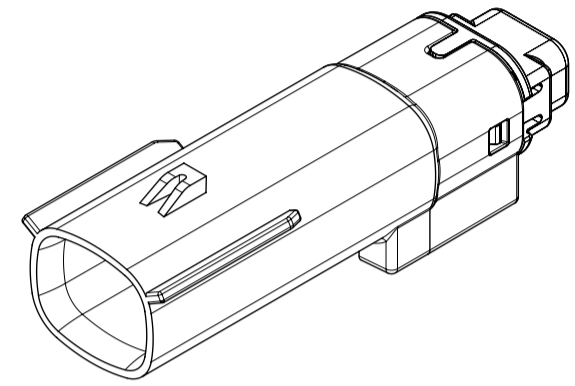
| INSPECTION NUMBER LOG | |
|-----------------------|--|
| LAST NUMBER: 9 | ADDED: |
| 2 | INITIAL RELEASE |
| 1 | UPDATED VIEWSETS |
| | |
| | |
| REV | REV DESCRIPTION |
| A1 | NX REMASTERING , CHANGE PS DRAWING NUMBER FROM PS-160105-0001 TO PS-160074-0001 IN NOTES 1.b |
| A | MINOR GEOMETRY CHANGE FOR UL V0 |

| | | | | |
|---|---|---|--|--|
| SYMBOLS = 0 = 0 = 0 = 0 = 0 = 0 = 0 = 0 = 0 | THIS DRAWING CONTAINS INFORMATION THAT IS PROPRIETARY TO MOLEX ELECTRONIC TECHNOLOGIES, LLC AND SHOULD NOT BE USED WITHOUT WRITTEN PERMISSION DIMENSION UNITS: MM ONLY SCALE: 1.5:1 | CURRENT REV DESC: EC NO: 602373 DRWN: DSHETTY01 2018/05/25 CHK'D: MVANSLAMBROU 2018/10/04 APPR: MVANSLAMBROU 2018/10/04 | MX150 BLADE SINGLE ROW SEALED ASSY MAT SEAL PRODUCT CUSTOMER DRAWING | |
| | GENERAL TOLERANCES (UNLESS SPECIFIED) ANGULAR TOL ± 1.0° | INITIAL REVISION: DRWN: APROFFITT 2015/07/21 APPR: KDEKOSKI 2016/06/14 | | DOCUMENT NUMBER: SD-33481-0001 DOC TYPE: PSD DOC PART: 001 REVISION: A1 |
| | 4 PLACES ± 3 PLACES ± 2 PLACES ± 0.1 1 PLACE ± 0.2 0 PLACES ± | DRAFT WHERE APPLICABLE MUST REMAIN WITHIN DIMENSIONS THIRD ANGLE PROJECTION DRAWING: A1-SIZE SERIES: 33481 | | MATERIAL NUMBER: SEE NOTE 2a. CUSTOMER: GENERAL MARKET SHEET NUMBER: 1 OF 9 |
| | DOCUMENT STATUS: P1 RELEASE DATE: 2018/10/04 15:02:02 | | | |

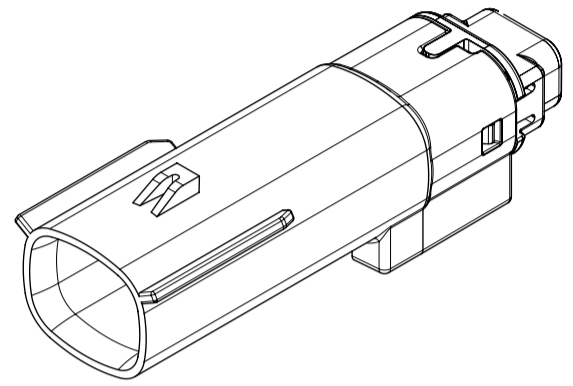
SHEET DESCRIPTION
CONFIGURATIONS



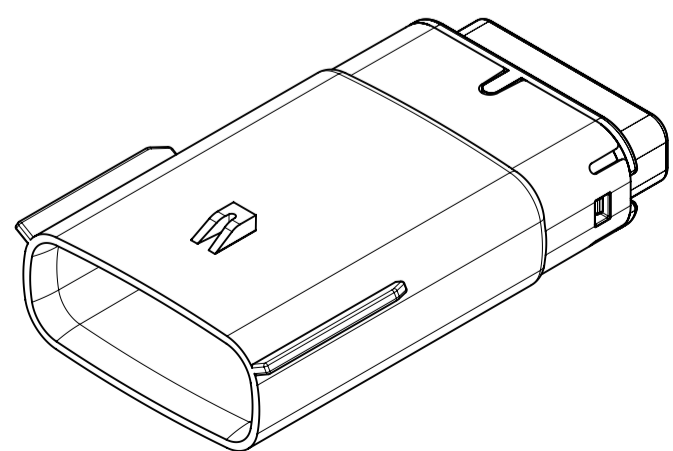
UL V0 UNIQUE FEATURE
Partial1
SCALE 10:1



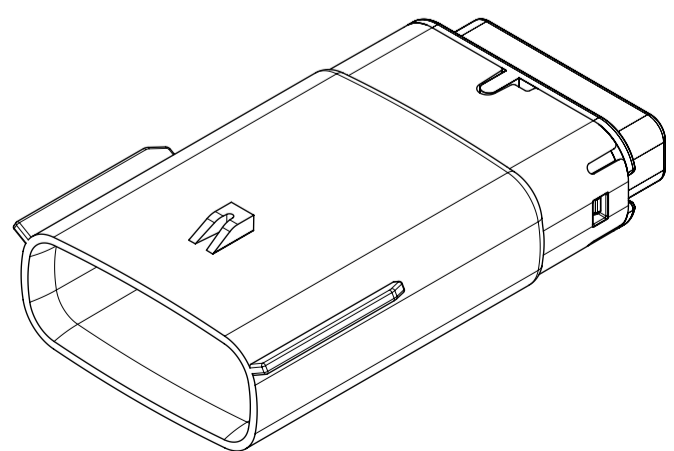
1x2 - STD



1X2 - UL V0*



1x6 - STD

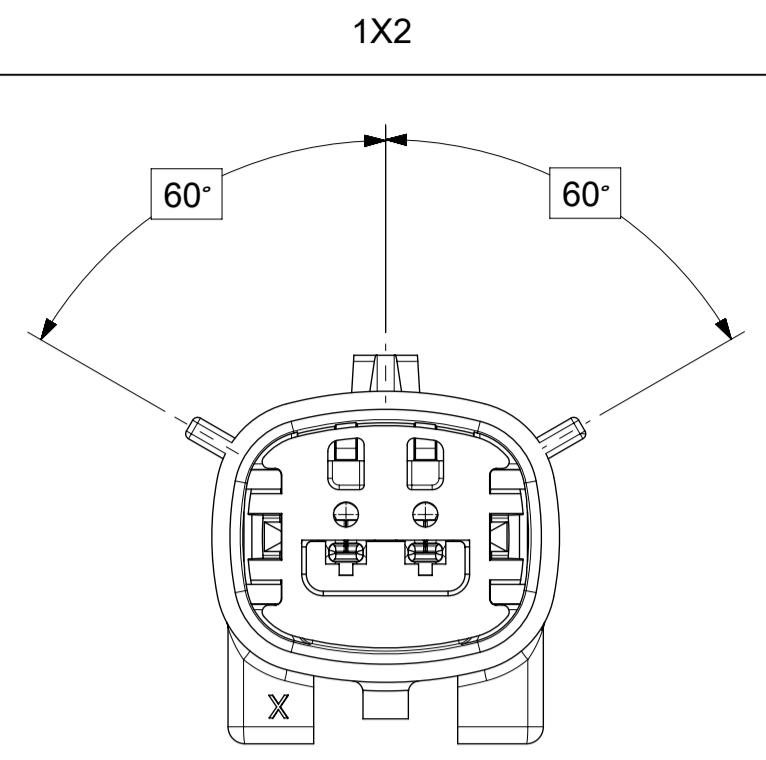


1x6 - UL V0*

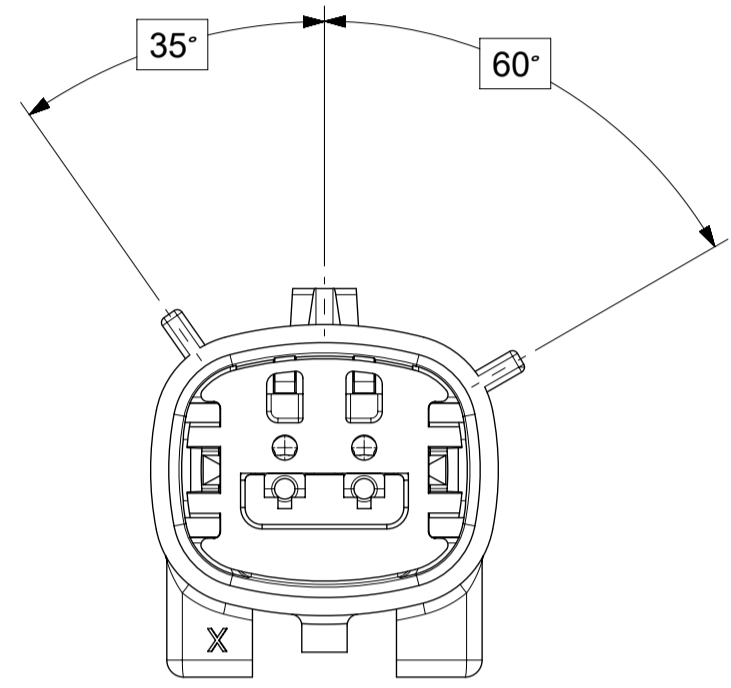
* MINOR GEOMETRY DIFFERENCE THAN STANDARD CONFIGURATION.
SEE NOTES 1 & 2 FOR MORE INFORMATION

| | | | | | | | | | |
|---------|---|-------|--|------------------------|--------------------------|---------------|----------|----------------|---------------|
| SYMBOLS | THIS DRAWING CONTAINS INFORMATION THAT IS PROPRIETARY TO MOLEX ELECTRONIC TECHNOLOGIES, LLC AND SHOULD NOT BE USED WITHOUT WRITTEN PERMISSION | | CURRENT REV DESC: | | | | | | |
| | DIMENSION UNITS | SCALE | | | | | | | EC NO: 602373 |
| ▽ = 0 | MM ONLY | 1.5:1 | GENERAL TOLERANCES (UNLESS SPECIFIED) | CHK'D: MVANSLAMBROU | 2018/10/04 | SD-33481-0001 | PSD | 001 | A1 |
| ▽ = 0 | ANGULAR TOL ± 1.0° | | APPR: MVANSLAMBROU | 2018/10/04 | PRODUCT CUSTOMER DRAWING | | | | |
| ▽ = 0 | 4 PLACES ± | | INITIAL REVISION: | DRWN: APROFFITT | 2015/07/21 | SEE NOTE 2a. | CUSTOMER | GENERAL MARKET | SHEET NUMBER |
| ▽ = 0 | 3 PLACES ± | | APPR: KDEKOSKI | 2016/06/14 | 2 OF 9 | | | | |
| ▽ = 0 | 2 PLACES ± 0.1 | | DRAFT WHERE APPLICABLE MUST REMAIN WITHIN DIMENSIONS | THIRD ANGLE PROJECTION | DRAWING | SERIES | | | |
| ▽ = 0 | 1 PLACE ± 0.2 | | | | A1-SIZE | 33481 | | | |
| ▽ = 0 | 0 PLACES ± | | | | | | | | |
| ▽ = 0 | | | | | | | | | |

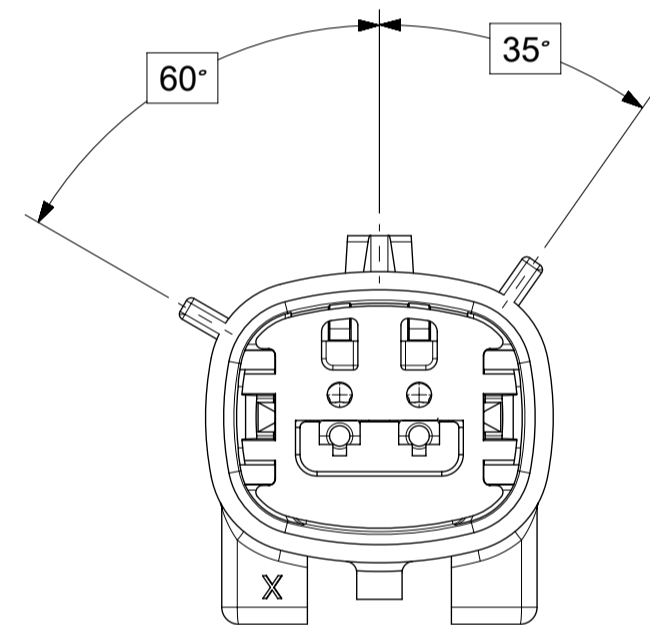
SHEET DESCRIPTION
KEY CONFIGURATIONS



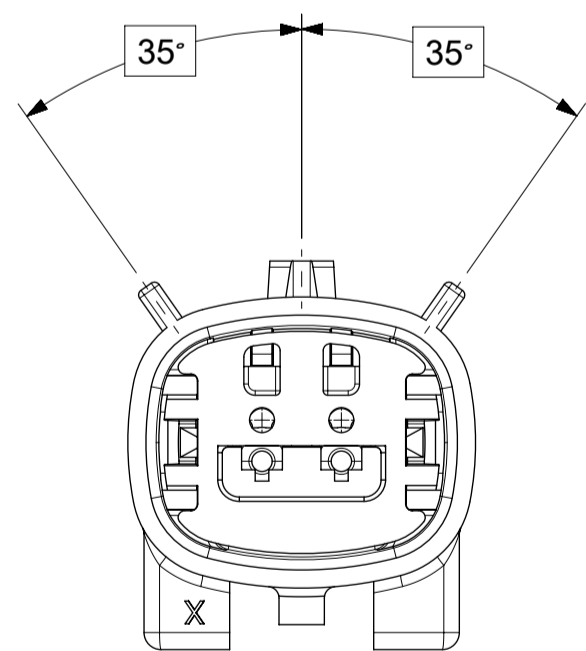
KEY A



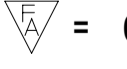
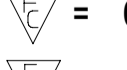

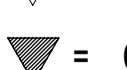
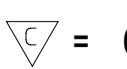
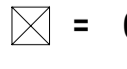

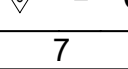


KEY B



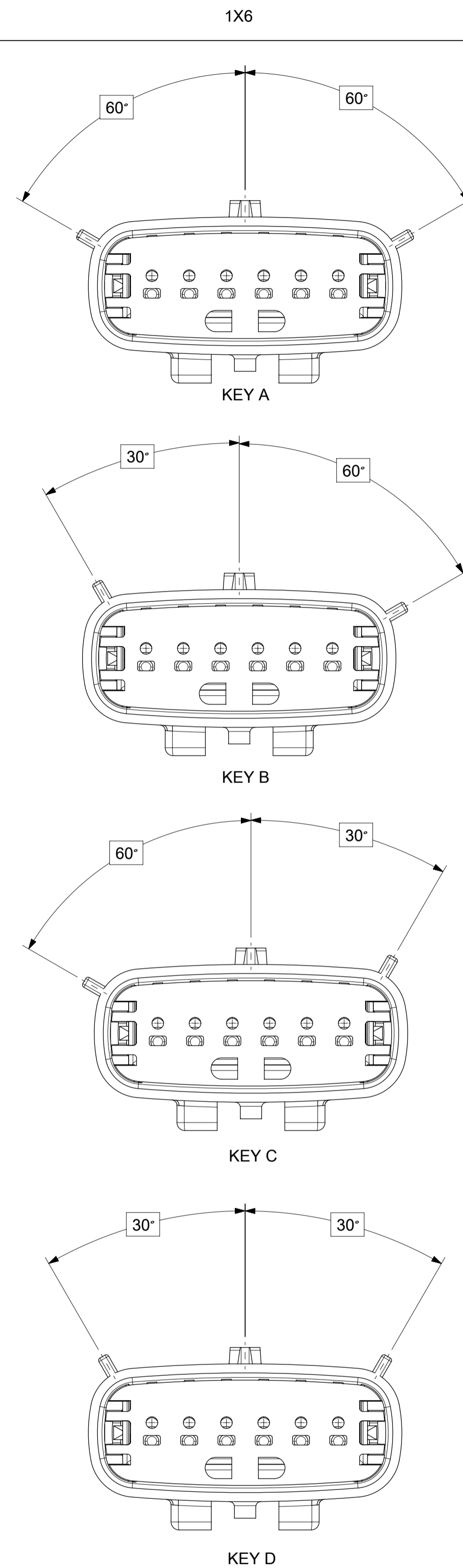
KEY C



KEY D

| | | | | | |
|--|---|---|---|-----------------------------|--|
| SYMBOLS  = 0  = 0  = 0  = 0  = 0  = 0  = 0  = 0 | THIS DRAWING CONTAINS INFORMATION THAT IS PROPRIETARY TO MOLEX ELECTRONIC TECHNOLOGIES, LLC AND SHOULD NOT BE USED WITHOUT WRITTEN PERMISSION DIMENSION UNITS: MM ONLY SCALE: 3:1 | CURRENT REV DESC: EC NO: 602373 DRWN: DSHETTY01 2018/05/25 CHK'D: MVANSLAMBROU 2018/10/04 APPR: MVANSLAMBROU 2018/10/04 |  MX150 BLADE SINGLE ROW SEALED ASSY MAT SEAL | | |
| | GENERAL TOLERANCES (UNLESS SPECIFIED) ANGULAR TOL ± 1.0° 4 PLACES ± 3 PLACES ± 2 PLACES ± 0.1 1 PLACE ± 0.2 0 PLACES ± DRAFT WHERE APPLICABLE MUST REMAIN WITHIN DIMENSIONS | INITIAL REVISION: DRWN: APROFFITT 2015/07/21 APPR: KDEKOSKI 2016/06/14 | PRODUCT CUSTOMER DRAWING DOCUMENT NUMBER: SD-33481-0001 DOC TYPE: PSD DOC PART: 001 REVISION: A1 | | |
| | THIRD ANGLE PROJECTION  | DRAWING: A1-SIZE SERIES: 33481 | MATERIAL NUMBER: SEE NOTE 2a. CUSTOMER: GENERAL MARKET | SHEET NUMBER: 3 OF 9 | |

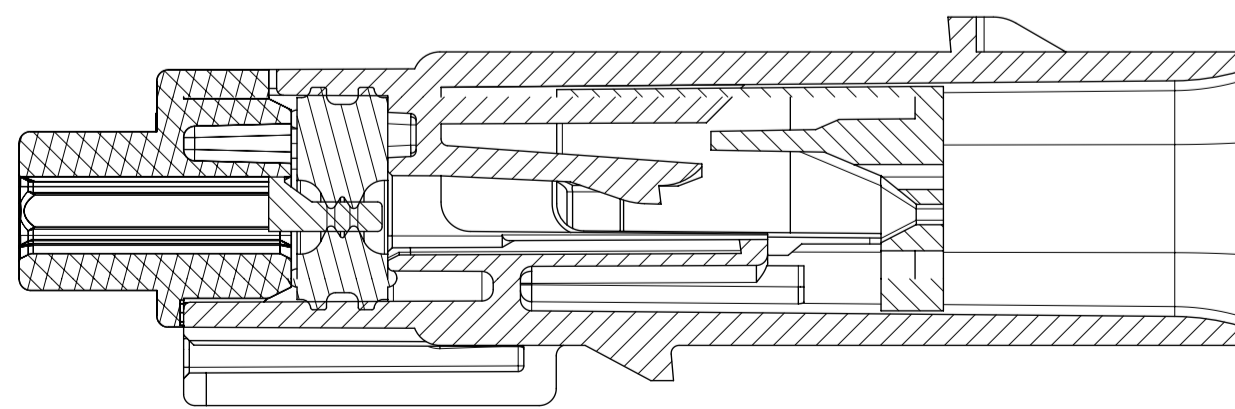
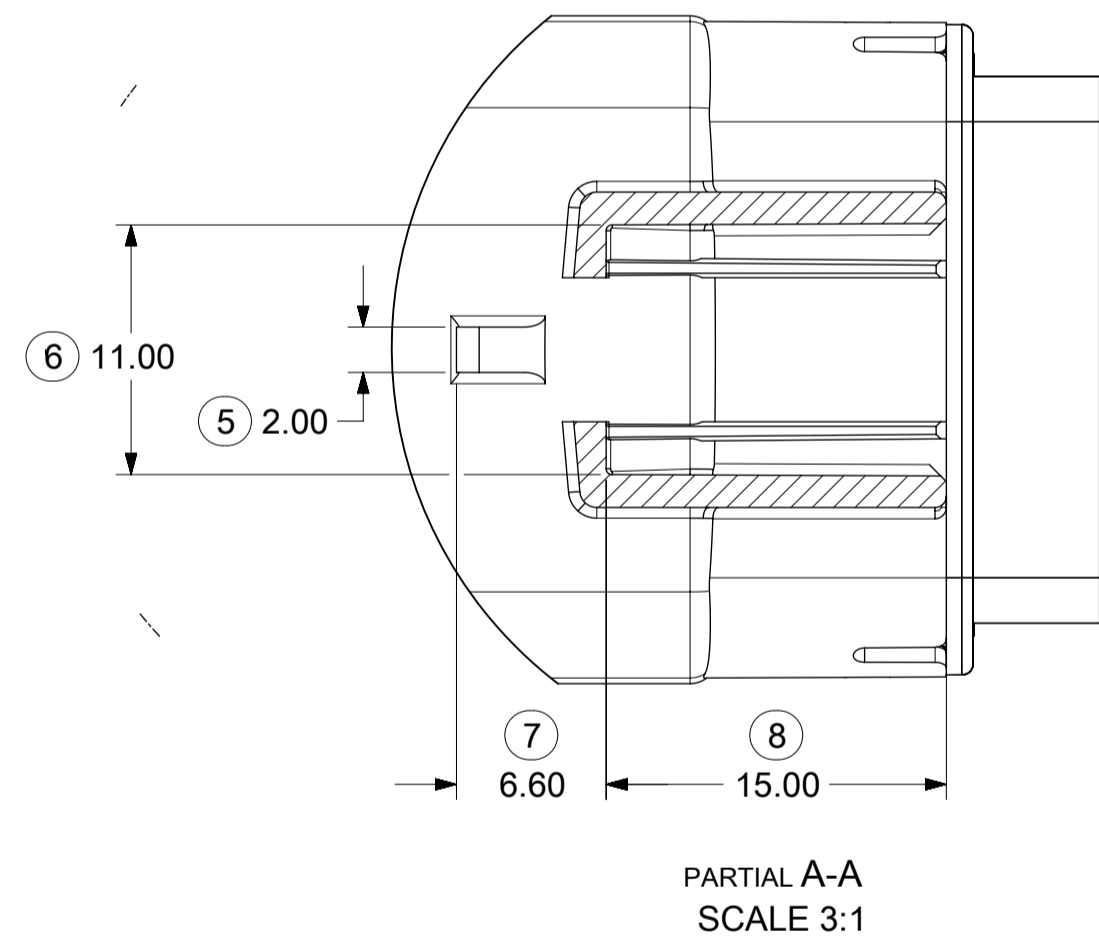
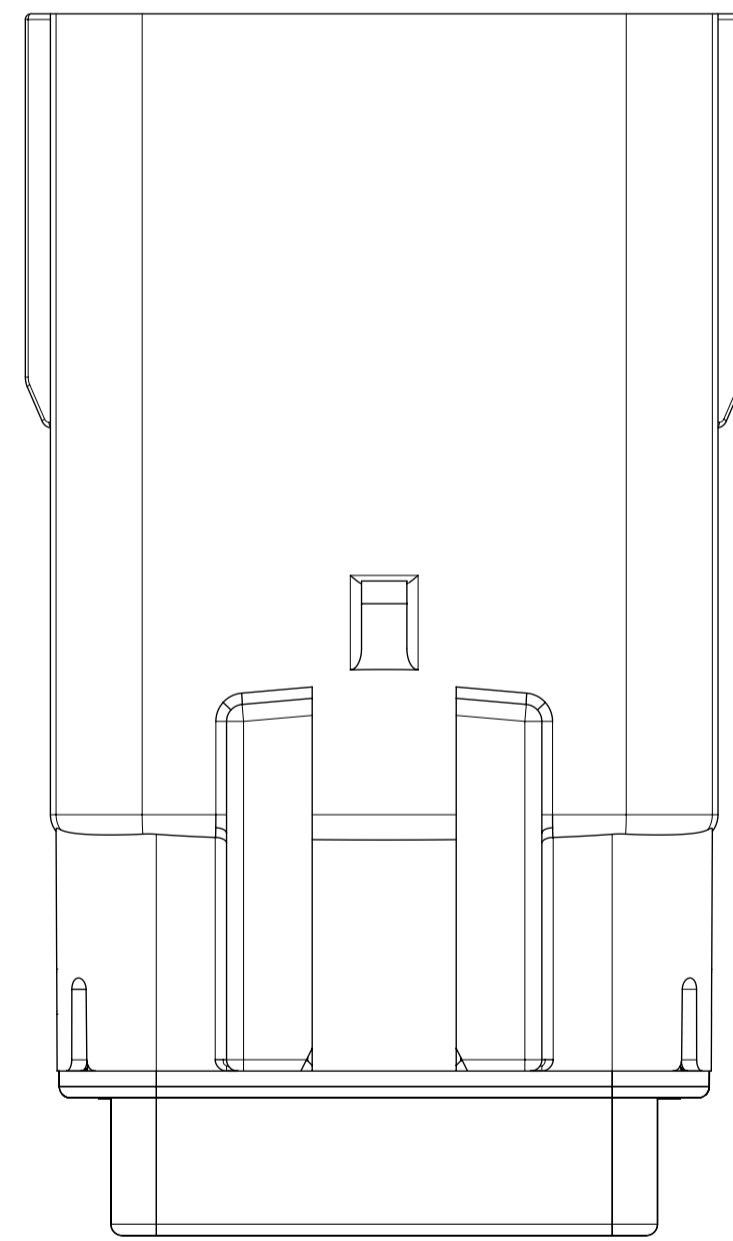
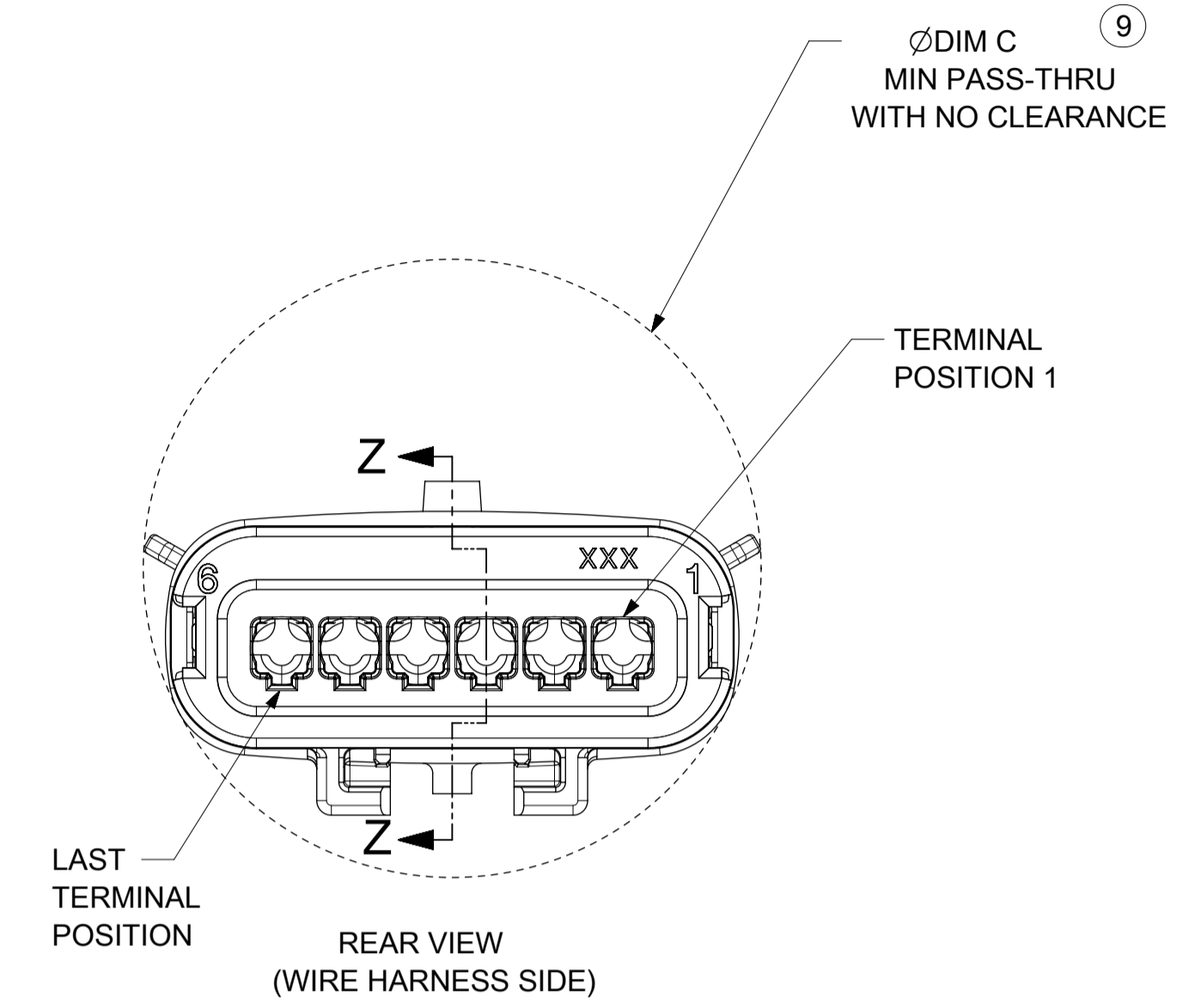
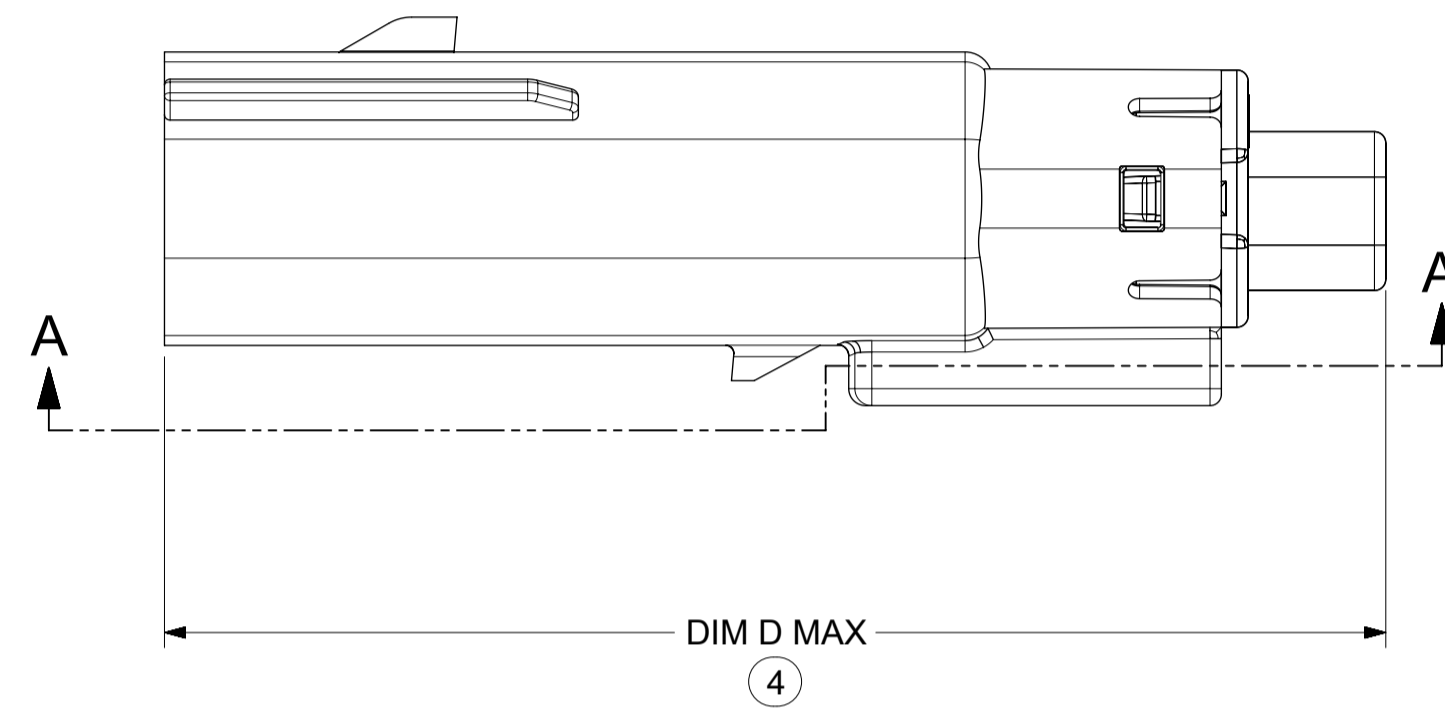
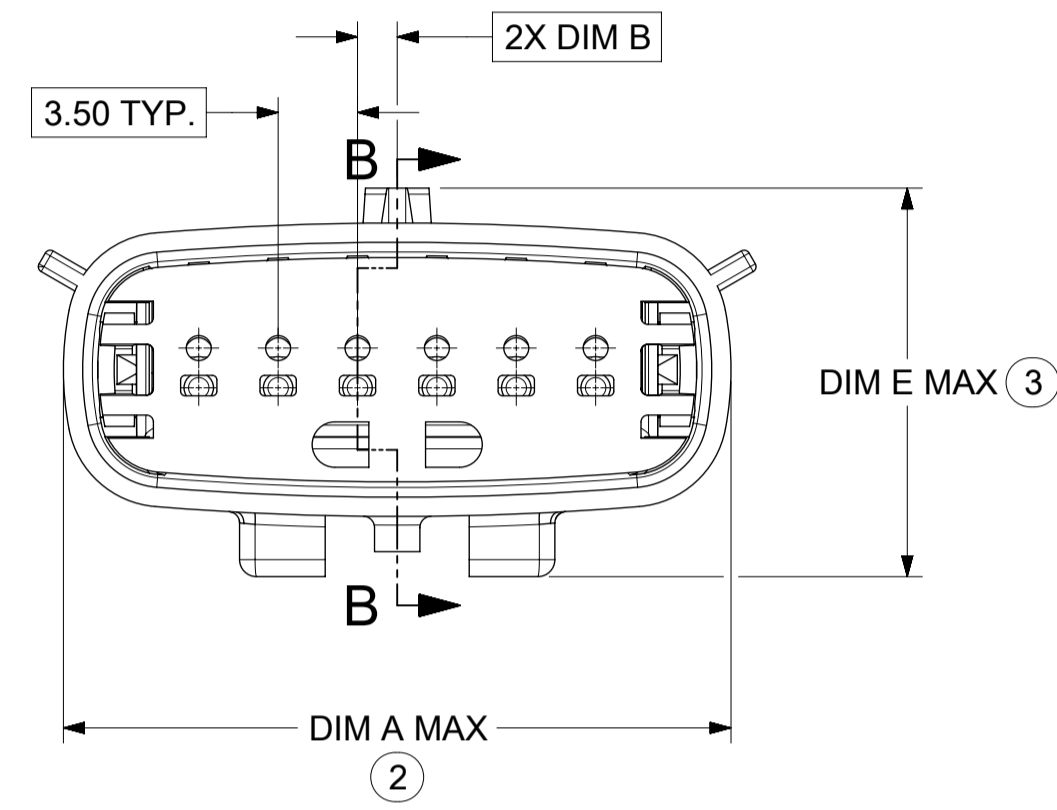
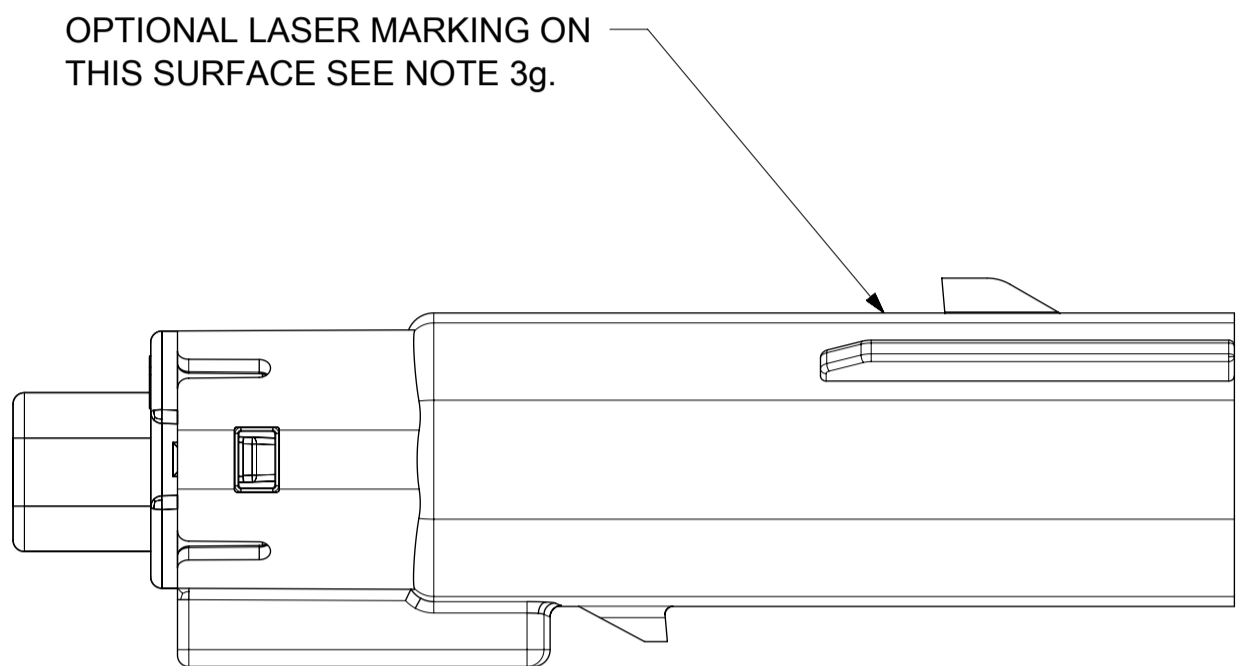
SHEET DESCRIPTION
KEY CONFIGURATIONS CONT.



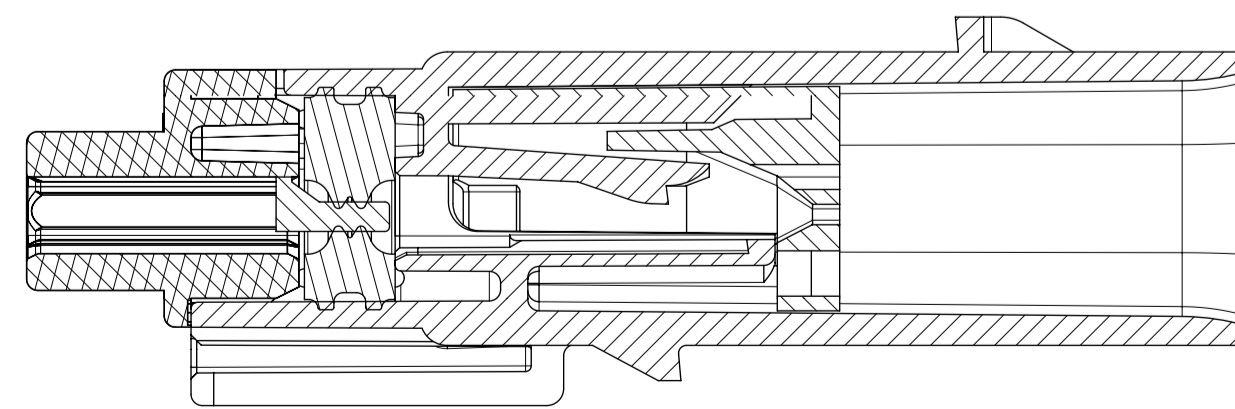
| | | | | | |
|--|---|---|--|---|--|
| SYMBOLS = 0 = 0 = 0 = 0 = 0 = 0 = 0 = 0 = 0 = 0 | THIS DRAWING CONTAINS INFORMATION THAT IS PROPRIETARY TO MOLEX ELECTRONIC TECHNOLOGIES, LLC AND SHOULD NOT BE USED WITHOUT WRITTEN PERMISSION DIMENSION UNITS: MM ONLY SCALE: 3:1 | CURRENT REV DESC: EC NO: 602373 DRWN: DSHETTY01 2018/05/25 CHK'D: MVANSLAMBROU 2018/10/04 APPR: MVANSLAMBROU 2018/10/04 | MX150 BLADE SINGLE ROW SEALED ASSY MAT SEAL | | |
| | GENERAL TOLERANCES (UNLESS SPECIFIED) ANGULAR TOL ± 1.0° 4 PLACES ± 3 PLACES ± 2 PLACES ± 0.1 1 PLACE ± 0.2 0 PLACES ± | INITIAL REVISION: DRWN: APROFFITT 2015/07/21 APPR: KDEKOSKI 2016/06/14 | PRODUCT CUSTOMER DRAWING DOCUMENT NUMBER: SD-33481-0001 DOC TYPE: PSD DOC PART: 001 REVISION: A1 | MATERIAL NUMBER: SEE NOTE 2a. CUSTOMER: GENERAL MARKET SHEET NUMBER: 4 OF 9 | |
| DRAFT WHERE APPLICABLE MUST REMAIN WITHIN DIMENSIONS | THIRD ANGLE PROJECTION | DRAWING: A1-SIZE SERIES: 33481 | | | |

SHEET DESCRIPTION
BLADE SEALED ASSEMBLY

| DESCRIPTION | DIMENSIONS | | | | |
|-------------|------------|------|-------|-------|-------|
| | A | B | C | D | E |
| 1X2 | N/A | 1.75 | 21.00 | 55.50 | 17.30 |
| | | | | | |
| 1X6 | 29.69 | 1.75 | 31.71 | 54.45 | 17.23 |



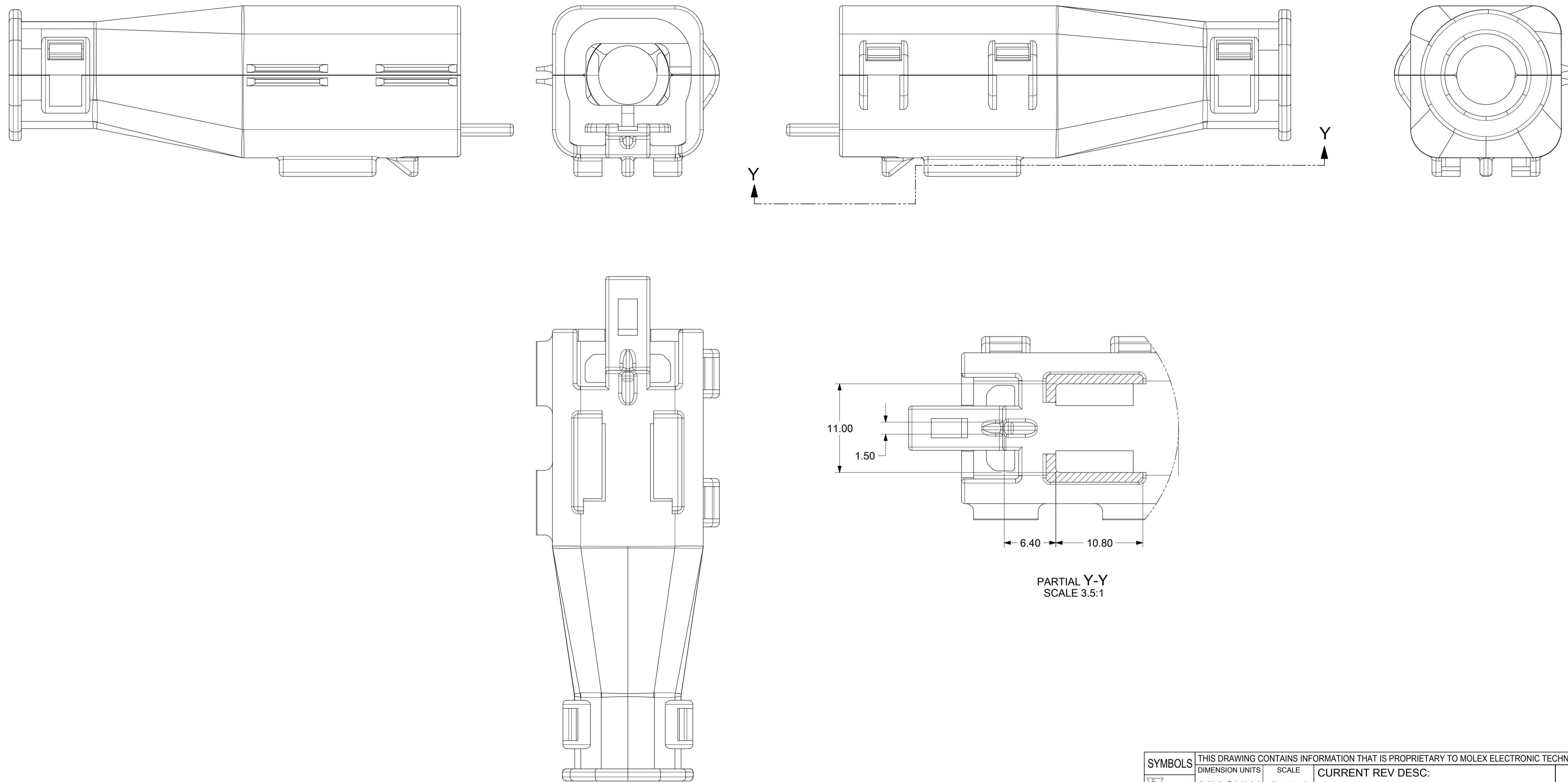
PRIMARY LOCK REINFORCEMENT (PLR) SHOWN
IN PRE-STAGED POSITION
SECTION B-B



PRIMARY LOCK REINFORCEMENT (PLR) SHOWN
IN FINAL-LOCK POSITION
SECTION Z-Z

| | | | |
|--|---|--|--|
| SYMBOLS = 0 = 0 = 0 = 0 = 0 = 0 = 0 = 0 = 0 = 0 | THIS DRAWING CONTAINS INFORMATION THAT IS PROPRIETARY TO MOLEX ELECTRONIC TECHNOLOGIES, LLC AND SHOULD NOT BE USED WITHOUT WRITTEN PERMISSION DIMENSION UNITS: MM ONLY SCALE: 3:1 | CURRENT REV DESC: EC NO: 602373 DRWN: DSHETTY01 2018/05/25 CHK'D: MVANSLAMBROU 2018/10/04 APPR: MVANSLAMBROU 2018/10/04 INITIAL REVISION: DRWN: APROFFITT 2015/07/21 APPR: KDEKOSKI 2016/06/14 | MX150 BLADE SINGLE ROW SEALED ASSY MAT SEAL |
| | GENERAL TOLERANCES (UNLESS SPECIFIED) ANGULAR TOL ± 1.0° 4 PLACES ± 3 PLACES ± 2 PLACES ± 0.1 1 PLACE ± 0.2 0 PLACES ± | PRODUCT CUSTOMER DRAWING DOCUMENT NUMBER: SD-33481-0001 DOC TYPE: PSD DOC PART: 001 REVISION: A1 MATERIAL NUMBER: SEE NOTE 2a. CUSTOMER: GENERAL MARKET SHEET NUMBER: 5 OF 9 | |
| | DRAFT WHERE APPLICABLE MUST REMAIN WITHIN DIMENSIONS | | THIRD ANGLE PROJECTION |

SHEET DESCRIPTION
BACKSHELL



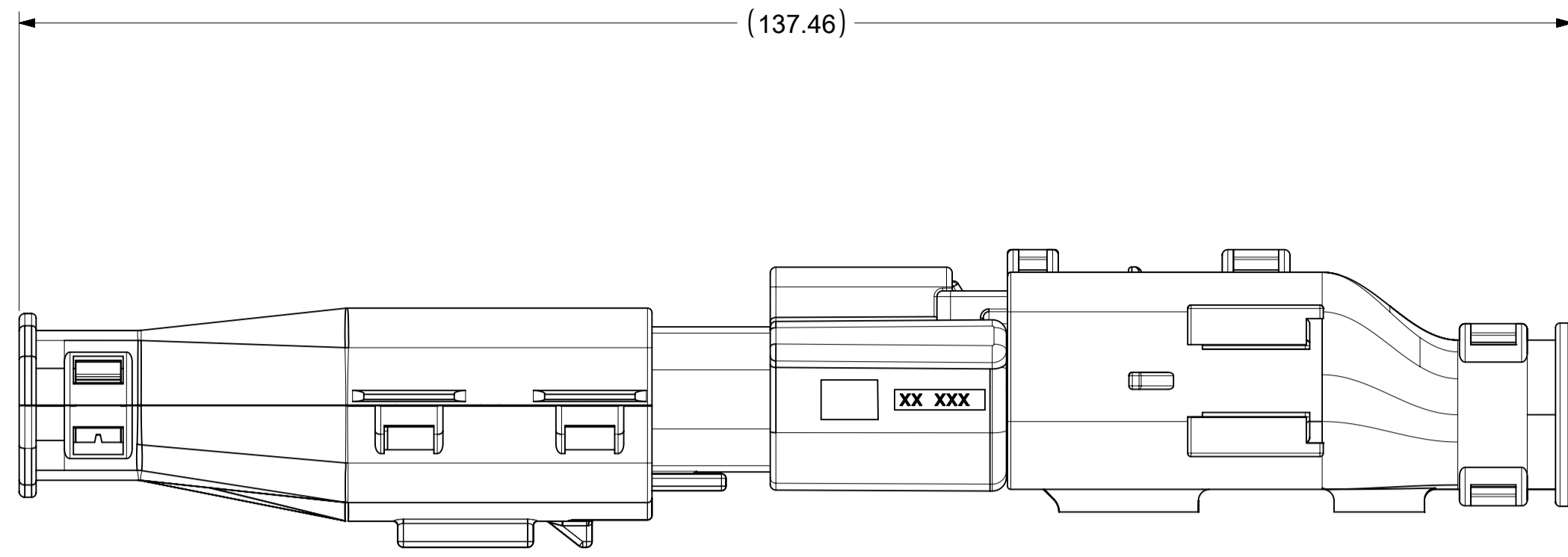
Y
Y

PARTIAL Y-Y
SCALE 3.5:1

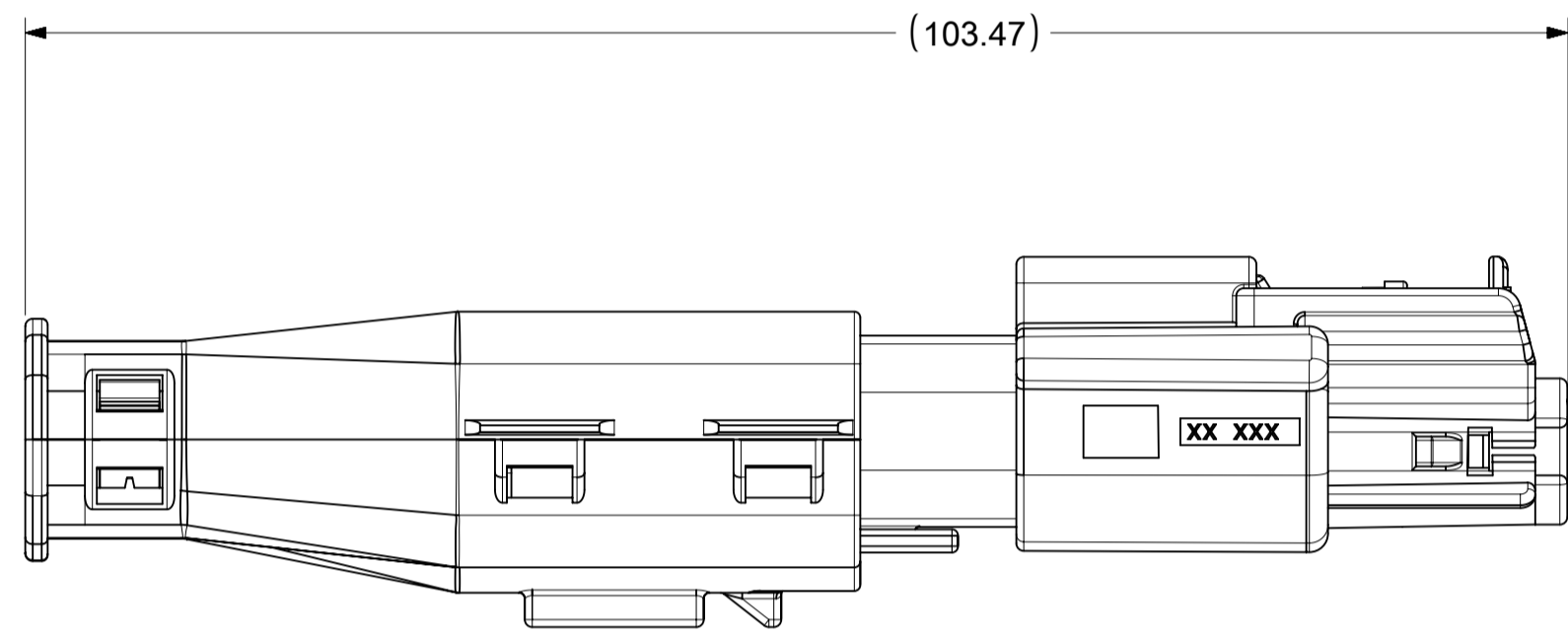
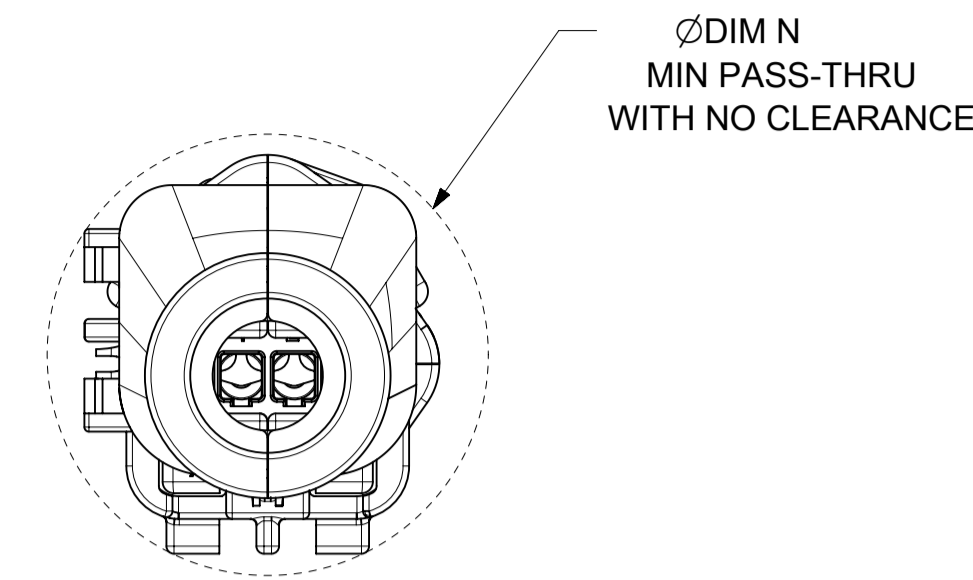
| | | | | | | | | |
|---|---|--|--|---------------------------------|----------------------------|---|--|--|
| SYMBOLS ▽ = 0 ▽ = 0 ▽ = 0 ▽ = 0 ▽ = 0 ▽ = 0 ▽ = 0 ▽ = 0 ▽ = 0 ▽ = 0 ▽ = 0 ▽ = 0 ▽ = 0 | THIS DRAWING CONTAINS INFORMATION THAT IS PROPRIETARY TO MOLEX ELECTRONIC TECHNOLOGIES, LLC AND SHOULD NOT BE USED WITHOUT WRITTEN PERMISSION DIMENSION UNITS MM ONLY | SCALE 3.5:1 | CURRENT REV DESC: EC NO: 602373 DRWN: DSHETTY01 2018/05/25 CHK'D: MVANSLAMBROU 2018/10/04 APPR: MVANSLAMBROU 2018/10/04 | | | <div style="text-align: center; font-weight: bold; font-size: 1.5em;">molex</div> MX150 BLADE SINGLE ROW SEALED ASSY MAT SEAL | | |
| | GENERAL TOLERANCES (UNLESS SPECIFIED) ANGULAR TOL ± 1.0° 4 PLACES ± 3 PLACES ± 2 PLACES ± 0.1 1 PLACE ± 0.2 0 PLACES ± DRAFT WHERE APPLICABLE MUST REMAIN WITHIN DIMENSIONS | INITIAL REVISION: DRWN: APROFFITT 2015/07/21 APPR: KDEKOSKI 2016/06/14 | DOCUMENT NUMBER SD-33481-0001 | DOC TYPE PSD | DOC PART 001 | | | |
| | THIRD ANGLE PROJECTION | DRAWING A1-SIZE | SERIES 33481 | MATERIAL NUMBER SEE NOTE 2a. | CUSTOMER GENERAL MARKET | SHEET NUMBER 8 OF 9 | | |

SHEET DESCRIPTION
BACKSHELL CONFIGURATIONS

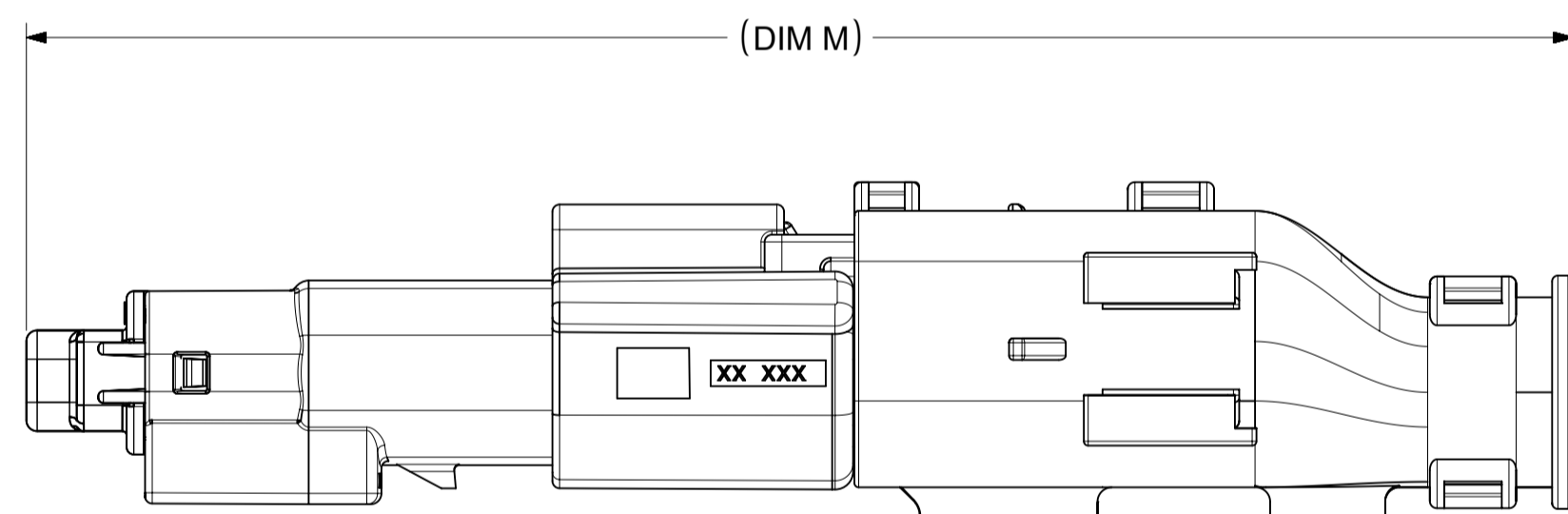
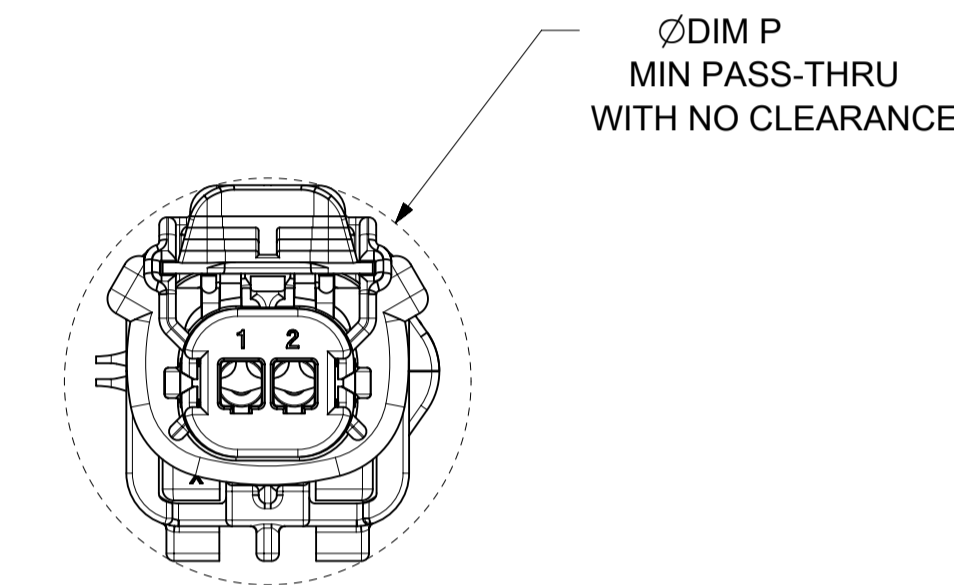
| CKT | BLADE CONFIGURATION | RECEPTACLE CONFIGURATION | DIMENSIONS | | | | |
|-----|---------------------|--------------------------|------------|-------|-------|-------|-------|
| | | | M | N | P | R | S |
| 1X2 | STANDARD | STANDARD | 107.84 | 29.50 | 27.00 | 26.25 | 25.00 |



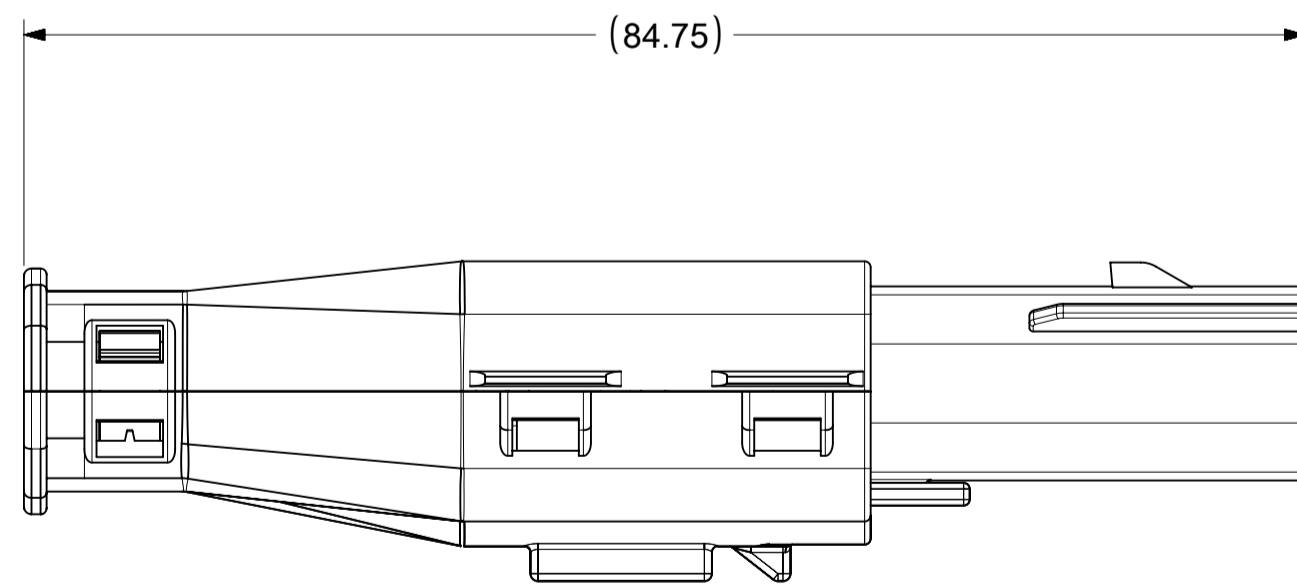
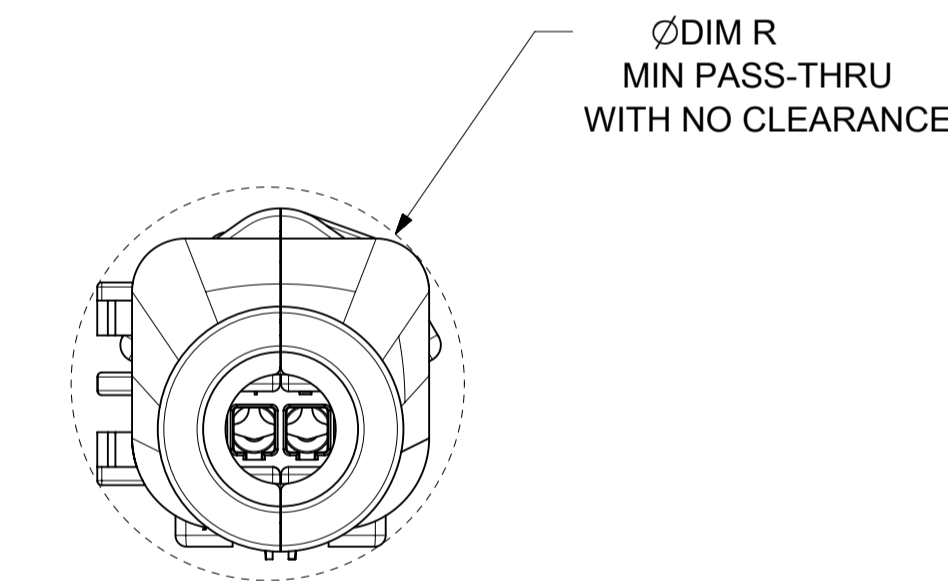
OVERALL MATED SYSTEM WITH BLADE AND RECEPTACLE BACKSHELL



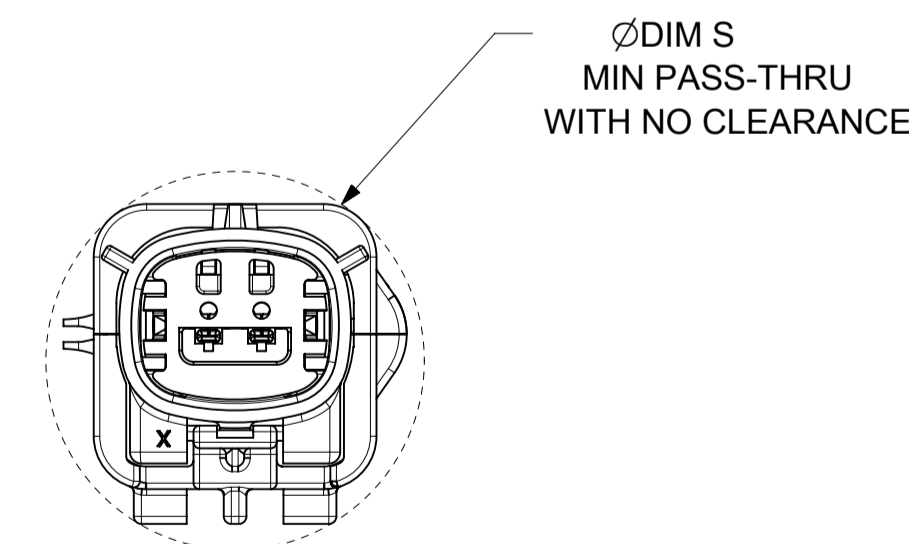
OVERALL MATED SYSTEM WITH BLADE BACKSHELL



OVERALL MATED SYSTEM WITH RECEPTACLE BACKSHELL



BLADE SEALED ASSEMBLY WITH BLADE BACKSHELL



| | | | |
|---|---|---|--|
| SYMBOLS = 0 = 0 = 0 = 0 = 0 = 0 = 0 | THIS DRAWING CONTAINS INFORMATION THAT IS PROPRIETARY TO MOLEX ELECTRONIC TECHNOLOGIES, LLC AND SHOULD NOT BE USED WITHOUT WRITTEN PERMISSION DIMENSION UNITS: MM ONLY SCALE: 2:1 GENERAL TOLERANCES (UNLESS SPECIFIED) ANGULAR TOL ± 1.0° 4 PLACES ± 3 PLACES ± 2 PLACES ± 0.1 1 PLACE ± 0.2 0 PLACES ± DRAFT WHERE APPLICABLE MUST REMAIN WITHIN DIMENSIONS | CURRENT REV DESC: EC NO: 602373 DRWN: DSHETTY01 2018/05/25 CHK'D: MVANSLAMBROU 2018/10/04 APPR: MVANSLAMBROU 2018/10/04 INITIAL REVISION: DRWN: APROFFITT 2015/07/21 APPR: KDEKOSKI 2016/06/14 | MX150 BLADE SINGLE ROW SEALED ASSY MAT SEAL PRODUCT CUSTOMER DRAWING |
| | DOCUMENT NUMBER: SD-33481-0001 DOC TYPE: PSD DOC PART: 001 REVISION: A1 | MATERIAL NUMBER: SEE NOTE 2a. CUSTOMER: GENERAL MARKET SHEET NUMBER: 9 OF 9 | |