



LV HRC FUSE LINK GL/GG WITH NON-INSULATED GRIP LUGS WITH COMBINATION INDICATOR SIZE 2, 80A, AC 690V/DC 440V

Model		
product brand name		SENTRON
Product designation		LV HRC fuse link
Design of an identification indicator		Combination alarms
Design of the switching contact		Non-corroding, silver-plated
Design of the fuse link		LV HRC fuse link

General technical data		
Size of fuse system / acc. to DIN EN 60269-1		NH2
Operating class of the fuse link		gG
circuit-breaker / Design		3NA7
Mounting type		Non-insulated grip lugs

Protection class		
Protection class IP		IP20, with connected conductors

Switching capacity			
Switching capacity current			
	• for DC / acc. to IEC 60947-2 / Rated value	kA	25
	• acc. to IEC 60947-2 / Rated value	kA	120

Dissipation		
Active power loss		
	• for rated value of the current / with AC / in hot operating state / per pole	W

Electricity		
rated current I <sub>n</sub> / IEC, DIN/VDE / at 40 Cel	A	76

Current / with AC / Rated value	A	80
---------------------------------	---	----

### Mechanical Design

mounting position	Any, preferably vertical
-------------------	--------------------------

### Environmental conditions

<b>Ambient temperature</b>		
• minimum	°C	-5
• maximum	°C	40
• during storage / Note		Air humidity 90% at 20 °C

### Certificates

<b>Equipment marking</b>		
• acc. to DIN EN 61346-2		F
• acc. to DIN EN 81346-2		F

<b>General Product Approval</b>	<b>Declaration of Conformity</b>	<b>Test Certificates</b>
---------------------------------	----------------------------------	--------------------------



[Type Test Certificates/Test Report](#)

[Special Test Certificate](#)

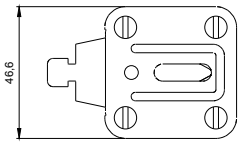
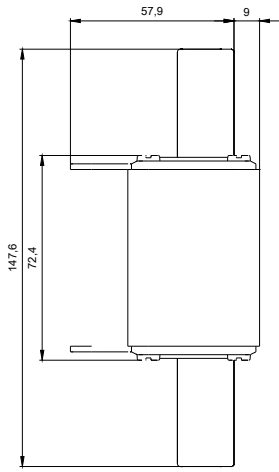
<b>Test Certificates</b>	<b>other</b>
--------------------------	--------------

[other](#)

[other](#)

### Further information

- Information- and Downloadcenter (Catalogs, Brochures,...)**  
<http://www.siemens.com/lowvoltage/catalogs>
- Industry Mall (Online ordering system)**  
<https://eb.automation.siemens.com/mall/en/WW/Catalog/Product/3NA72246>
- Service&Support (Manuals, Certificates, Characteristics, FAQs,...)**  
<http://support.automation.siemens.com/WW/view/en/3NA72246/all>
- Image database (product images, 2D dimension drawings, 3D models, device circuit diagrams, ...)**  
[http://www.automation.siemens.com/bilddb/cax\\_en.aspx?mlfb=3NA72246](http://www.automation.siemens.com/bilddb/cax_en.aspx?mlfb=3NA72246)
- CAX-Online-Generator**  
<http://www.siemens.com/cax>
- Tender specifications**  
<http://ausschreibungstexte.siemens.com/tiplv>



**last modified:**

11.03.2015